

## SKINNY FISH LAKE

## BACKPACKING TRIP

**FYI:** The map on the reverse side is for general orientation, not for navigation.  
**P.S.** Get and post trail updates at [www.facebook.com/oriccolorado](http://www.facebook.com/oriccolorado)

**Location:** Flat Tops Wilderness  
White River National Forest  
Near Trappers Lake

**Contact Info:** Blanco Ranger District  
970-878-4039  
[www.fs.fed.us/r2](http://www.fs.fed.us/r2)

**Length:** 2.49 miles one-way (estimate using Nat'l Geo Mapping Software)

**Time:** Overnight backpack. The average person hikes at a speed of 2 miles per hour. Adjust your time +/- based on terrain, trail and weather conditions and your skill and fitness level.

**Elevation Gain/Loss:** See trail profile on reverse side

**Difficulty:** Easy, but a little steep in the beginning

**Trail Users:** Hikers, fisherman and wildlife

**Season:** Mid June to mid September

**Dogs:** On hand-held leash

**Permits:** Free use permit at trailhead

**Getting There from Denver:** Take I-70 west to Wolcott. At Wolcott take CO Highway 131 north to Yampa. At Yampa take Routt County Road 17 west (be forewarned that there is a big pothole that you should take pains to avoid) until it intersects with Routt County Road 132 (later becomes Forest Road 16). Take Forest Road 16 west until it changes names to Forest Road 8. Follow Forest Road 8 south over Ripple Pass to Forest Road 205. Take Forest Road 205 to the Skinny Fish & McGinnis Lakes trailhead.

**Maps:** National Geographic Trails Illustrated #150E and or the Devil's Causeway USGS 7.5 topographic map. **IMPORTANT:** Stay found with the aid of a topographic map, a compass, a GPS receiver and the skill to use them.

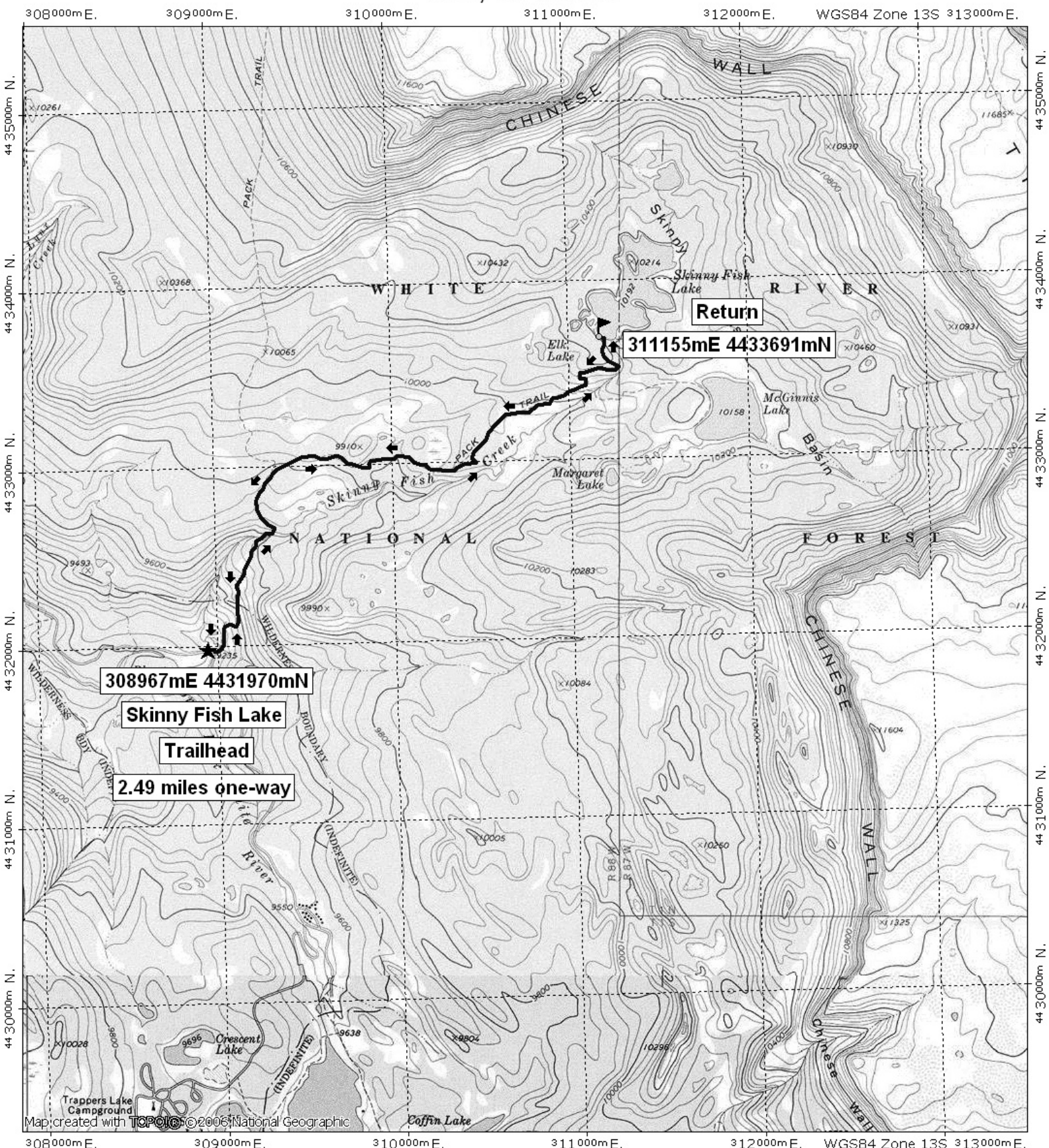
**Safety Considerations and Supplemental Info:** ■ Afternoon storms and lightning ■ Check [www.oriconline.org](http://www.oriconline.org) for fire restrictions ■ Be prepared for mosquitoes from June through September

**The Trail:** Good, well marked trail. **TIP:** Contact the Blanco Ranger District for trail updates.

**Highlights:** ■ Excellent fishing ■ Good views ■ Proximity to the "Chinese Wall"



# Skinny Fish Lake Trail



**308967mE 4431970mN**

**Skinny Fish Lake**

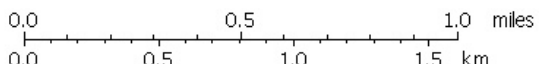
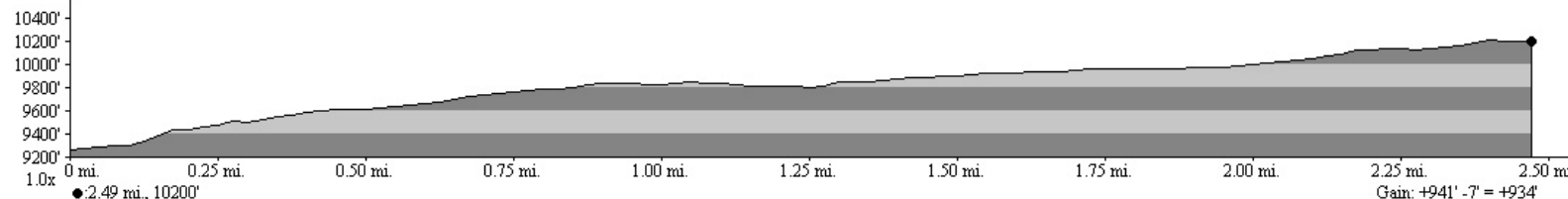
**Trailhead**

**2.49 miles one-way**

**Return**

**311155mE 4433691mN**

Map created with **TOPOCAD** ©2006 National Geographic



TN MN  
10 1/2°  
03/05/08