

BIG FISH LAKE

BACKPACKING TRIP

FYI: The map on the reverse side is for general orientation, not for navigation.
P.S. Get and post trail updates at www.facebook.com/oriccolorado

Location: Flat Tops Wilderness
White River National Forest
Near Trappers Lake

Contact Info: Yampa Ranger District
970-638-4516
www.fs.fed.us/r2

Length: 3.13 miles one-way (estimate using Nat'l Geo Mapping Software)

Time: Overnight backpack. The average person hikes apx. 2 miles per hour. Adjust your time +/- based on terrain, trail and weather conditions and your skill and fitness level.

Elevation Gain/Loss: See trail profile on the reverse side

Difficulty: Moderate

Season: Mid June through end of October

Trail Users: Hikers, stock animals, fisherman and wildlife

Dogs: Under owner's control

Permits: Free use permit may be required at the trailhead

Getting There From Denver: Take I-70 west to Wolcott. At Wolcott take CO Highway 131 north to Yampa. At Yampa take Routt County Road 17 west (be forewarned that there is a big pothole that you should take pains to avoid) until it intersects with Routt County Road 32 (later becomes Forest Road 16). Take Forest Road 16 west until it changes names to Forest Road 8. Follow Forest Road 8 south over Ripple Pass to Forest Road 205. Take FSR 205 to the Big Fish trailhead.

Maps: National Geographic Trails Illustrated #150E and or the Big Marvine Peak and Ripple Creek USGS 7.5 topographic maps. **TIP:** Stay found with the aid of a topographic map, a compass, a GPS receiver and the skill to use them.

Safety Considerations and Supplemental Info: ■ Watch for afternoon thunderstorms and lightening activity ■ Check www.oriconline.org for fire restrictions
■ Be prepared for mosquitoes from June through September

The Trail: Follows creek to Big Fish Lake. You may see evidence of the Big Fish Fire that burned east of Trapper's Lake. **HINT:** Contact the Yampa Ranger District for trail updates.

Highlights: ■ Fishing ■ Views ■ Wildflowers are great in July ■ Forest Road 16 is a beautiful Scenic Byway

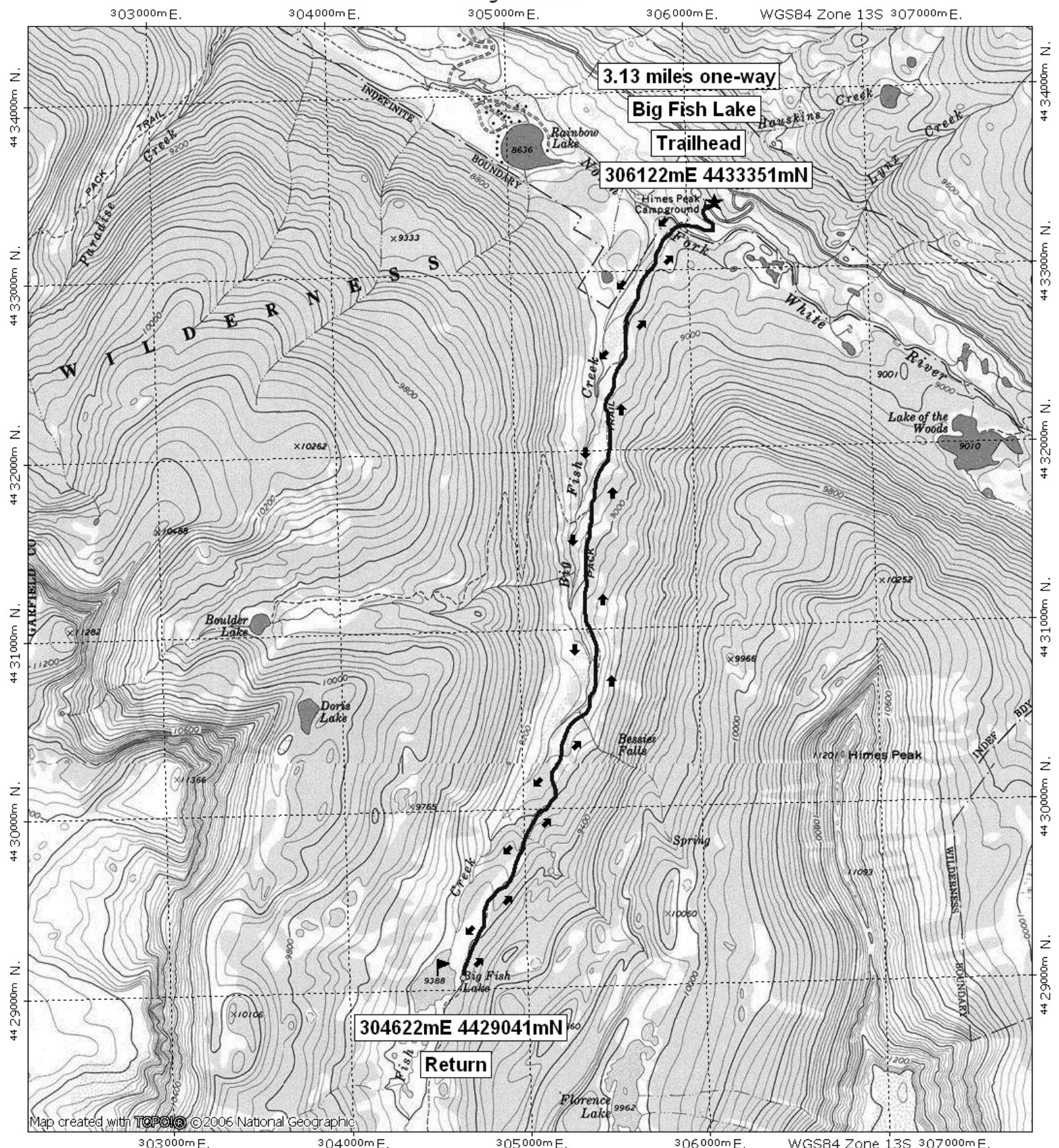
Visit us in the REI DENVER FLAGSHIP STORE

OUTDOOR RECREATION INFORMATION CENTER ■ 1416 Platte Street ■ Denver CO 80202
Ask us. We'll Tell You Where To Go ■ www.oriconline.org ■ Updated: 11-22-2017

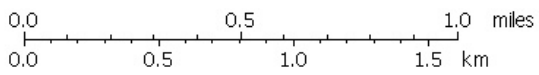
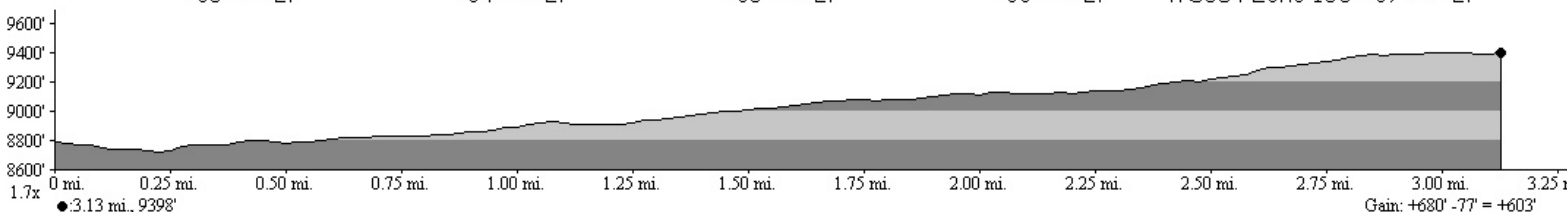
Follow us on: ■ facebook.com/oriccolorado ■ Twitter: @oricbryan



Big Fish Lake



Map created with **TOPOLIC** ©2006 National Geographic



TN MN
10 1/2°
03/05/08