

CHICAGO BASIN BACKPACKING TRIP

FYI: The map on the reverse side is for general orientation, not for navigation.
P.S. Get and post trail updates at www.facebook.com/oriccolorado

Location: Weminuche Wilderness
San Juan National Forest
Needle Creek Trailhead

Contact Info: Columbine Ranger District
970-884-2512
www.fs.fed.us/r2

Length: 6.54 miles one-way (estimate using Nat'l Geo Mapping Software)

Time: Overnight backpack with an option to stay longer. The average person hikes apx. 2 miles an hour. Adjust your time +/- based on terrain, trail and weather conditions and your skill and fitness level.

Elevation Gain/Loss: See trail profile on the reverse side

Difficulty: Moderate to strenuous

Trail Users: Hikers, mountain goats, squirrels, rabbits, pikas and marmots

Season: July through September

Dogs: Under owners control (voice control)

Permits: None required

Getting There from Durango: Take Durango & Silverton Narrow Gauge Railroad from Durango and ask to be dropped off at the Needle Creek trailhead. Train will make a special stop for this, and pick you up there on your way out. Allow enough time to make reservations on the train.

Maps: National Geographic Trails Illustrated #140W and the Mountain View Crest, Columbine Pass and Snowdon Peak USGS 7.5 topographic maps. **IMPORTANT:** Stay found with the aid of a topographic map, a compass, a GPS receiver and the skill to use them.

Safety Considerations and Supplemental Info: ■ We strongly encourage treating water drawn from local sources ■ Hang anything that you don't want the critters getting into. Marmots have been known to gnaw into shoulder straps, boots, etc. ■ Be especially respectful of the high alpine environment. Leave No Trace. ■ Be prepared for mosquitoes from July through September ■ **NOTE:** Consider visiting this popular destination on non-holiday weekdays.

Trail Description: The Needle Creek Trail #504 gets a lot of use because of it's unsurpassed beauty. Fires are banned in the Needle Creek drainage. Camping is prohibited in the Twin Lakes Basin. **TIP:** Contact the Columbine Ranger District for trail updates.

Highlights: ■ Alpine peaks, ridges and meadows ■ Forested drainages and lower slopes ■ The spectacular Needle Mountains ■ Proximity to 3 fourteeners ■ Rocky Mountain goats ■ Profusion of wildflowers ■ Miniature waterfalls along the trail ■ The fragrance of the forest

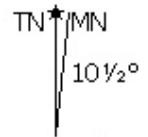
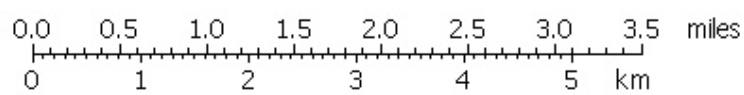
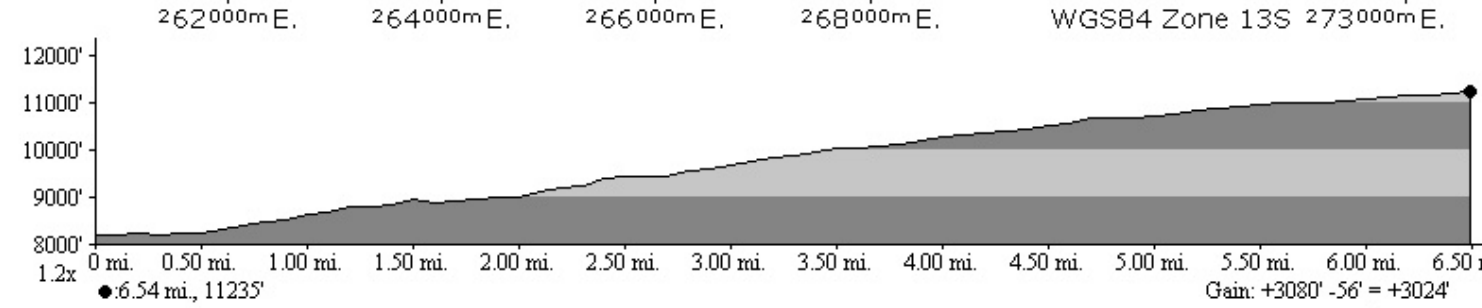
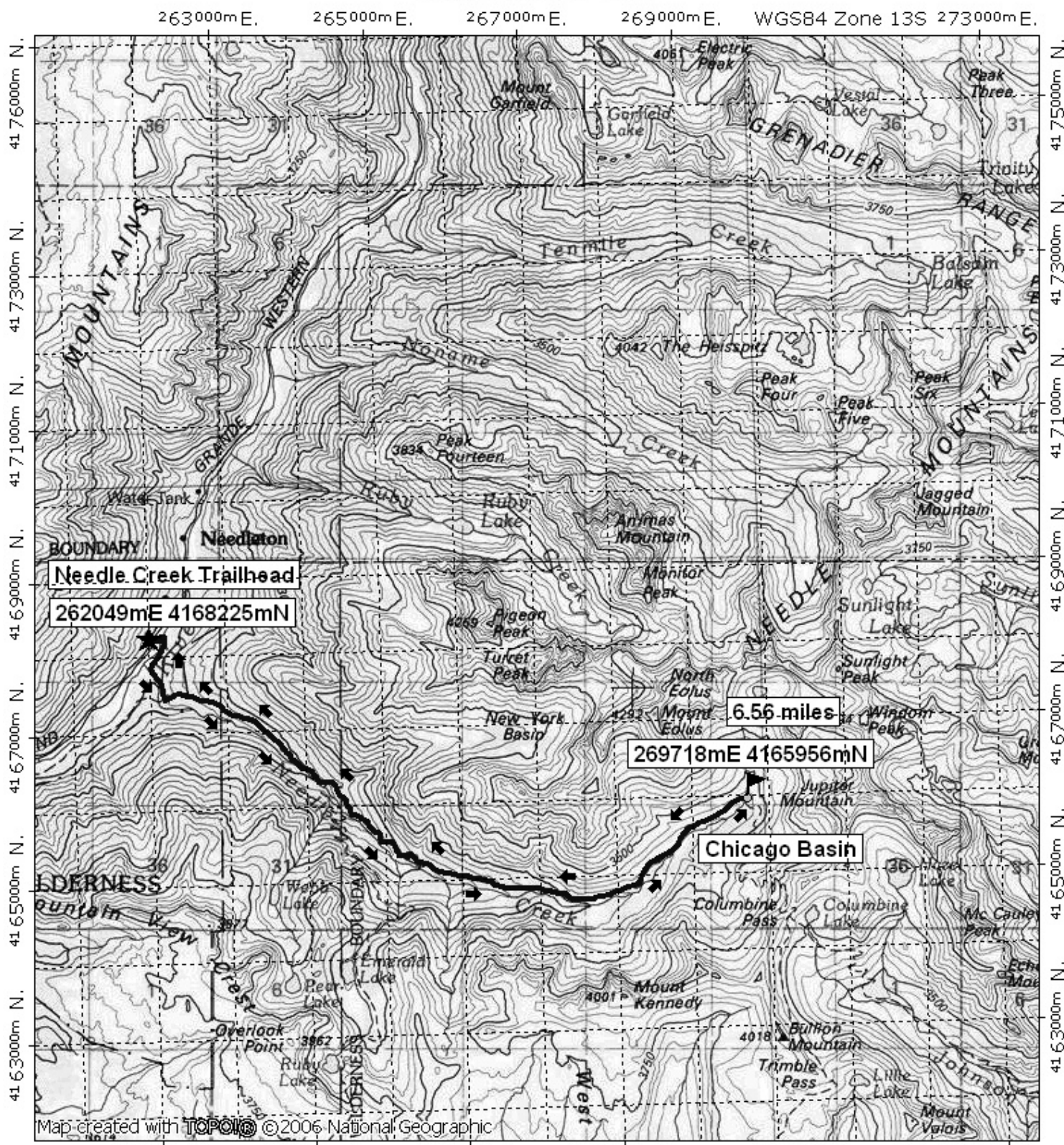
Visit us in the REI DENVER FLAGSHIP STORE

OUTDOOR RECREATION INFORMATION CENTER ■ 1416 Platte Street ■ Denver CO 80202
Ask us. We'll Tell You Where To Go ■ www.oriconline.org ■ Updated: 11-22-2017

Follow us on: ■ facebook.com/oriccolorado ■ Twitter: @oricbryan



Needle Creek Trail



02/13/08