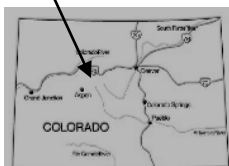




CROSS CREEK TO TREASURE VAULT LAKE



BACKPACKING TRIP

FYI: The map on the reverse side is for general orientation, not for navigation.
P.S. Get and post trail updates at www.facebook.com/oriccolorado

Location: Holy Cross Wilderness
White River National Forest
Tigiwon Rd S. of Minturn

Contact Info: Holy Cross Ranger District
970-827-5715
www.fs.fed.us/r2

Length: 13.51 miles one-way (estimate using Nat'l Geo Mapping Software)

Time: 3 nights, 4 days. The average person hikes apx. 2 miles an hour. Adjust your time +/- based on terrain, trail and weather conditions and your skill and fitness level.

Elevation Gain/Loss: See trail profile on reverse side

Difficulty: Moderate

Season: July through September

Trail Users: Hikers, llamas and wildlife

Dogs: On hand-held leash

Permits: Free use permit available at trailhead

Getting There from Denver: I-70 west to Dowd's Junction. Get off I-70 at exit 171 and take US Highway 24 south to Forest Development Road 707 (a.k.a. Tigiwon Road). The Tigiwon Road will take you to the Cross Creek Trailhead.

Maps: National Geographic Trails Illustrated #126E, #149S, Sky Terrain Summit Vail Trail Map and or the Minturn, Mt. Jackson and Mt. of the Holy Cross USGS 7.5 topographic quadrangle maps. **IMPORTANT:** Stay found with the aid of a topographic map, a compass, a GPS receiver and the skill to use them.

Safety Considerations and Supplemental Info: ■ Get updates on weather and fire restrictions at www.oriconline.org ■ Be prepared for mosquitoes from July through September ■ Treat water that is drawn from sources along the trail ■ Be prepared for afternoon thunderstorms and lightning

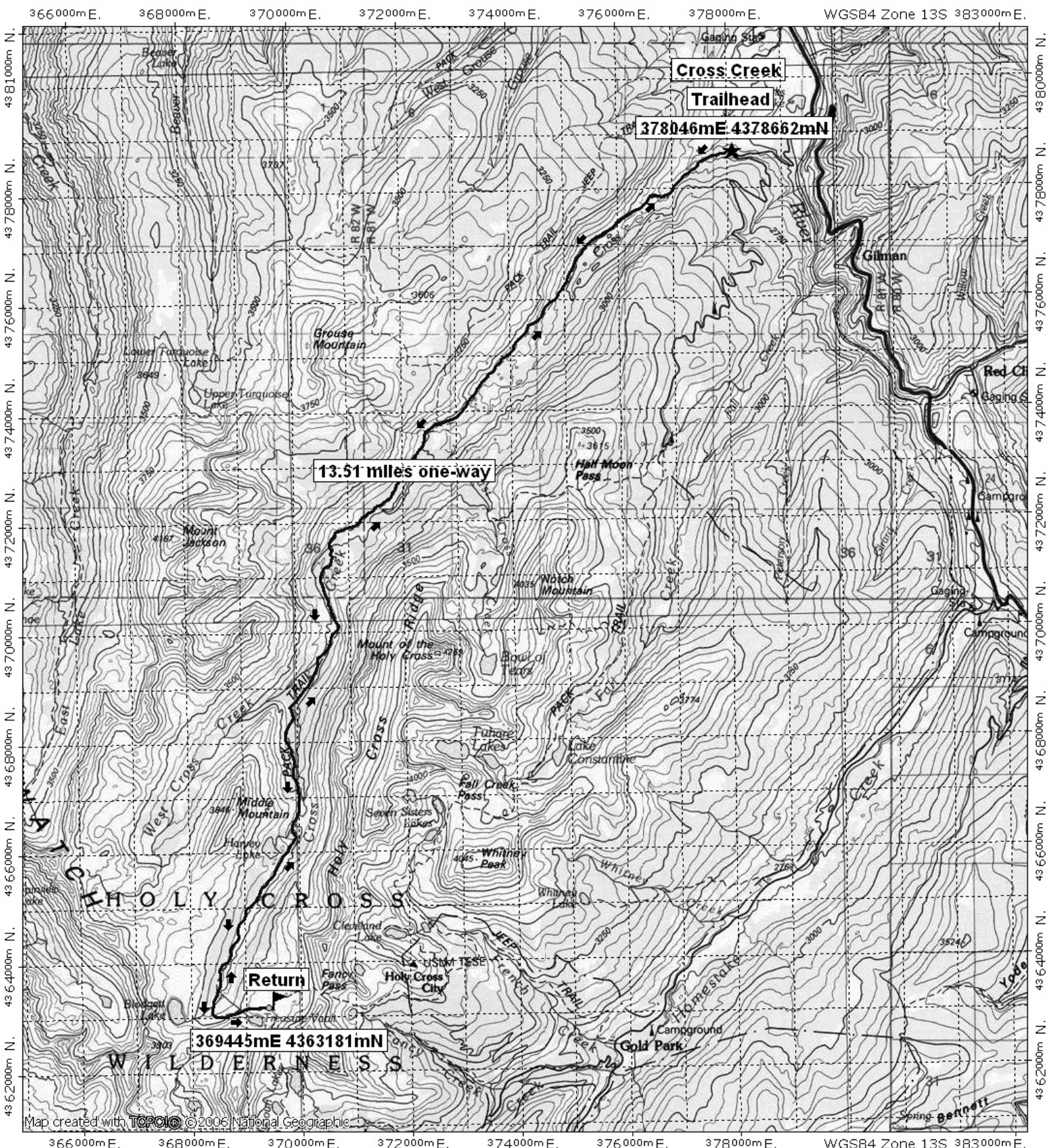
Trail Description: Cross Creek Trail #2006 more or less follows Cross Creek up valley to Treasure Vault Lake. **TIP:** Contact the Holy Cross Ranger District for trail updates.

Highlights: ■ Backside views of the Mt. of the Holy Cross ■ Large meandering meadows full of wildflowers ■ Beaver Ponds ■ The sound of cascading creeks ■ Good fishing ■ Picturesque Treasure Vault Lake ■ Good fishing at Harvey Lake and Blodgett Lake ■ Mining relics ■ Reed's Meadow ■ Views of Notch Mountain ■ Glacial Valley ■ Fragrant conifers and Aspen Groves

© 2007 ORIC All rights reserved.



Cross Creek to Treasure Vault Lake



13.51 miles one-way

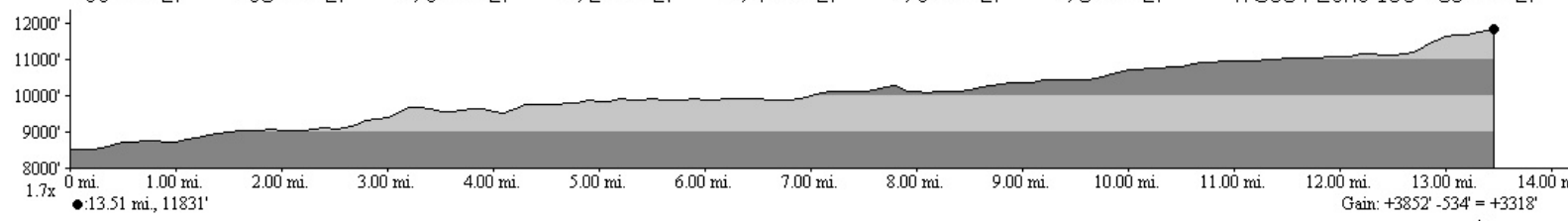
Cross Creek

Trailhead

378046mE 437862mN

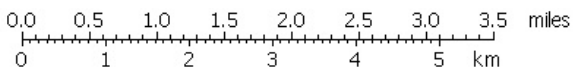
Return

369445mE 4363181mN



● 13.51 mi., 11831'

Gain: +3852' -534' = +3318'



TN MN
10°

03/13/08