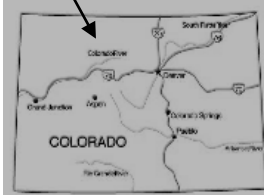


GOLD CREEK LAKE & GILPIN LAKE LOOP



BACKPACKING TRIP

FYI: The map on the reverse side is not intended for navigation, but rather for general orientation.

P.S. More trail maps available at www.oriconline.org

Location: Mt. Zirkel Wilderness
Routt National Forest
31 mi. N of Steamboat Sprgs

Contact Info: Hahns Pk/Bears Ears RD
970-870-2299
www.fs.fed.us/r2

Length: 10.27 mile loop (estimate using Nat'l Geo Mapping Software)

Time: Overnight backpack with options for a longer stay. The average person hikes apx. 2 miles an hour. Adjust your time +/- based on terrain, trail and weather conditions and your skill and fitness level.

Elevation Gain/Loss: See trail profile on reverse side

Difficulty: Moderate

Season: Early July through September

Trail Users: Hikers, backpackers, equestrians, stock animals and wildlife

Dogs: On hand-held leash

Permits: None required.

Getting There From Denver: I-70 west to Silverthorne. Take Exit 205 and follow CO Highway 9 north to junction of US Highway 40 in Kremling. Turn left on to US Highway 40 and follow it to Steamboat Springs. Turn right on to Routt County Road 129 just NW of Steamboat Springs. Take Routt County Road 129 north to Glen Eden. Turn right on to Routt County Road 64 (later becomes Forest Road 400) and follow it to the Slavonia Trailhead.

Maps: National Geographic Trails Illustrated #116E and or the Mt. Zirkel USGS 7.5 topographic map. **IMPORTANT:** Stay found with the aid of a topographic map, a compass, a GPS receiver and the skill to use them.

Safety Considerations and Supplemental Info: ■ Afternoon thunderstorms and lightning ■ Treat water drawn from sources along the trail ■ Stream crossings can be a challenge in the Spring and early Summer ■ Check www.oriconline.org for fire restrictions ■ Be prepared for mosquitoes from July through September ■ Camping is prohibited within ¼ mile of shoreline at Gilpin Lake and Gold Creek Lake.

Trail Description: This is a loop trail that follows Gold Creek to Gold Creek Lake. The trail then climbs a ridge to Gilpin Lake and returns along Gilpin Creek. There are a few steep spots on the trail, but in general it is a good trail. There is one spot you'll have to wade through the creek. **TIP:** Contact the Hahns Peak/Bears Ears Ranger District for trail updates.

Highlights: ■ Good fishing in the lakes and streams ■ The wildflowers in early July are fantastic ■ Views of the Continental Divide ■ A chance to see a variety of wildlife ■ Consider a side trip up Mica Creek to Mica Lake if you have time

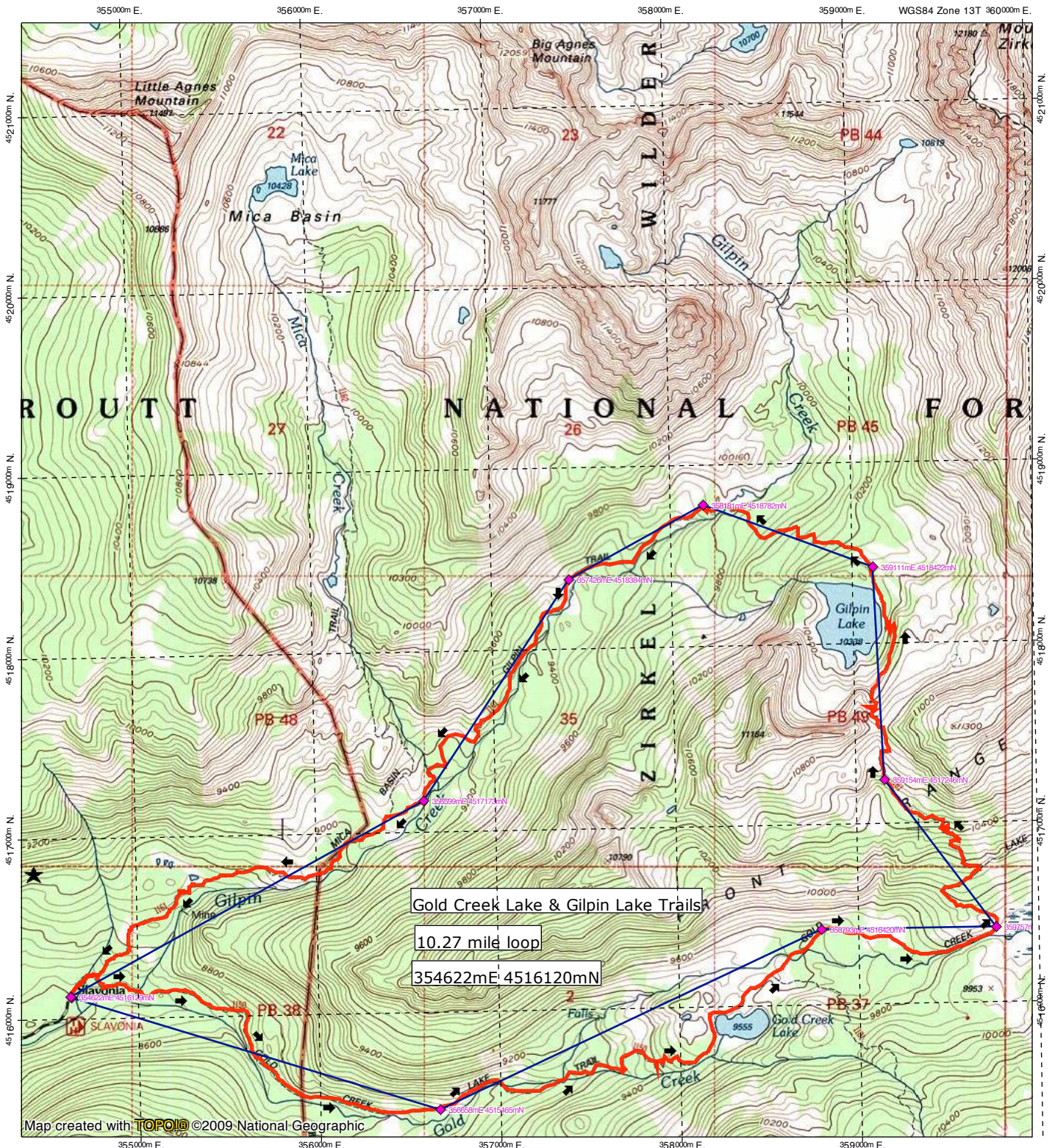
Visit us in the REI DENVER FLAGSHIP STORE

OUTDOOR RECREATION INFORMATION CENTER ■ 1416 Platte Street ■ Denver CO 80202
Ask us. We'll Tell You Where To Go ■ www.oriconline.org ■ Updated: 11-18-2017

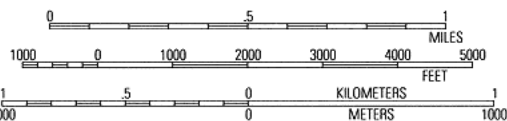
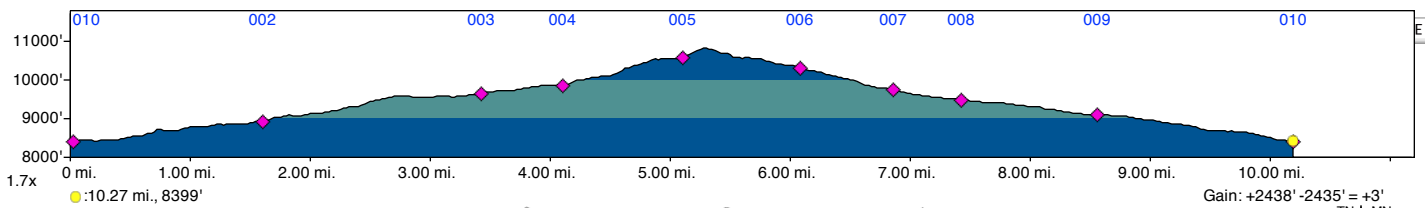
Follow us on: ■ [facebook.com/oriccolorado](https://www.facebook.com/oriccolorado) ■ Twitter: @oricbryan



TOPO! map printed on 07/14/12 from "Gold Creek Lake & Gilpin Lake Loop Map.tpo"



Map created with TOPO! ©2009 National Geographic



07/14/12