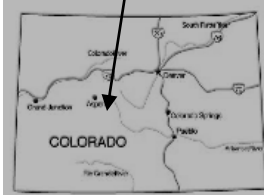


LAKE ANN



BACKPACKING TRIP

FYI: The map on the reverse side is for general orientation, not for navigation.
P.S. Get and post trail updates at www.facebook.com/oriccolorado

Location: Collegiate Peaks Wilderness
San Isabel National Forest

Contact Info: Leadville Ranger District
719-486-0749
www.fs.fed.us/r2

Length: 2.99 miles one-way (estimate using Nat'l Geo Mapping Software)

Time: Overnight backpack with options for a longer stay. The average person hikes apx. 2 miles an hour. Adjust your time +/- based on terrain, trail and weather conditions and your skill and fitness level.

Elevation Gain/Loss: See trail profile on reverse side

Difficulty: Moderate

Season: Early July through September

Trail Users: Continental Divide Trail thru hikers, backpackers and Mountain Goats

Dogs: On hand-held leash

Permits: None required

Getting There From Denver: Take I-70 West to Copper Mountain Exit 195. Take CO Hwy 91 South to Leadville. From the Forest Service Office on Front Street drive South on US Hwy 24 for apx. 18.25 miles. Turn right onto Chaffe County Rd 390. Take this unpaved road for apx. 11.7 miles to Winfield. Turn left at the fork. Cross Clear Crk after .2 miles. Park on the left and walk up the road to the closed gate.

Maps: National Geographic Trails illustrated #129W and or the Winfield USGS 7.5 topographic maps. **IMPORTANT:** Stay found with the aid of a topographic map, a compass, a GPS receiver and the skill to use them.

Safety Considerations and Supplemental Info: ■ Afternoon thunderstorms and lightning ■ Treat water drawn from sources along the trail ■ Stream crossings can be challenging in the Spring and early Summer ■ Check www.oriconline.org for fire restrictions ■ Be prepared for mosquitoes from July thru September ■ There is a rough area on the trail about ½ mile from Lake Ann.

Trail Description: The Lake Ann Trail #1642 parallels the South Fork of Clear Creek for most of the trip. Hike south from where you park. At 1.5 miles pass the Banker Mine on your left and keep straight at the four-way intersection about .5 miles to trailhead sign. Lake Ann (11,805') sits in a cirque surrounded by granite cliffs. It is about 250' above treeline. There are waterfalls about one mile east of the lake. **TIP:** Contact the Leadville Ranger District for trail updates.

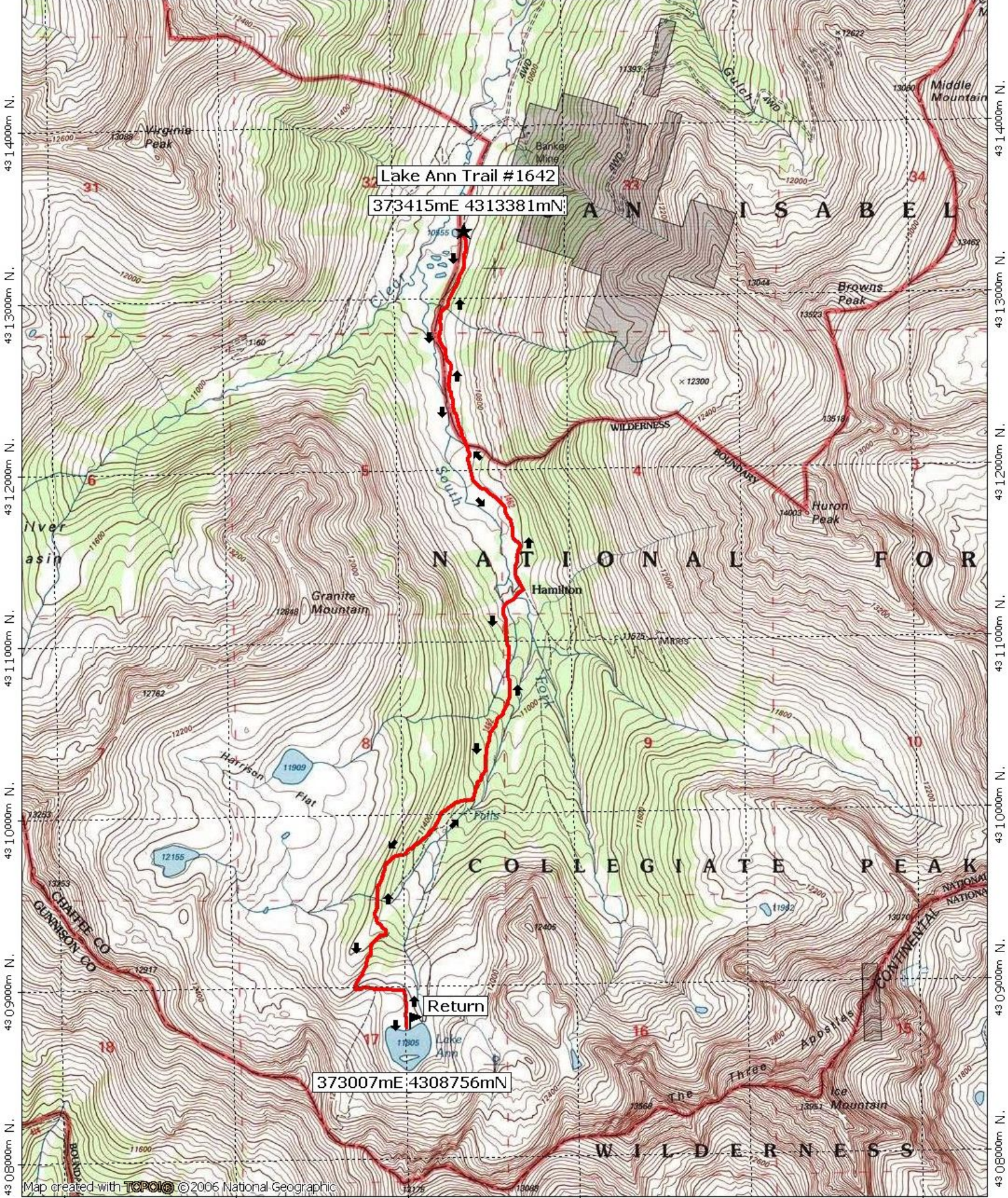
Highlights: ■ The views and the opportunity to climb Huron Peak (14,003') and Virginia Peak make this area special ■ Alpine serenity and solitude ■ Good fishing in the lakes and streams ■ A profusion of wildflowers in July and August ■ A chance to see a variety of wildlife including Mountain Goats and Bighorn Sheep

Visit us in the REI DENVER FLAGSHIP STORE

OUTDOOR RECREATION INFORMATION CENTER ■ 1416 Platte Street ■ Denver CO 80202
Ask us. We'll Tell You Where To Go ■ www.oriconline.org ■ Updated: 11-18-2017

Follow us on: ■ facebook.com/oriccolorado ■ Twitter: @oricbryan





Lake Ann Trail #1642

373415mE 4313381mN

Return

373007mE 4308756mN

