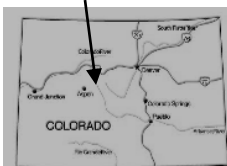




MISSOURI LAKES & FANCY PASS LOOP



BACKPACKING TRIP

FYI: The map on the reverse side is for general orientation, not for navigation.
P.S. Get and post trail updates at www.facebook.com/oriccolorado

Location: Holy Cross Wilderness
White River National Forest
Near Holy Cross City

Contact Info: Holy Cross Ranger District
970-827-5715
www.fs.fed.us/r2

Length: 7.67 mile loop (estimate using the Nat'l Geo Mapping Software)

Time: Overnight or multi-day backpack. The average person hikes apx. 2 miles per hour. Adjust your time +/- based on terrain, trail and weather conditions and your skill and fitness level.

Elevation Gain/Loss: See trail profile on reverse side

Difficulty: Moderate to strenuous

Season: Late June – Early October

Trail Users: Hikers, equestrians and wildlife

Dogs: On hand-held leash

Permits: Yes, free use permit available at trailhead

Getting There from Denver: I-70 west to Dowds Junction. Turn right at exit 171. Drive 12 miles south on US Hwy 24 to the turn-off for Homestake Rd #703 (after mile marker 156). Take Homestake Rd 7.8 miles to Gold Prk. Turn right onto Missouri Creek Rd (FR #704). Drive 3 miles to the Missouri Lks Trailhead.

Maps: National Geographic Trails Illustrated #126E or #149S, Sky Terrain Summit, Vail & Holy Cross map and or the Mount of the Holy Cross and Jackson USGS 7.5 topographic maps. **IMPORTANT:** Stay found with the aid of a topographic map, a compass, a GPS receiver and the skill to use them.

Safety Considerations and Supplemental Info: ■ Afternoon thunderstorms ■ The possibility of hiking through snow fields at higher altitudes ■ Strongly suggest treating water drawn from sources along the trail ■ Toilets at trailhead
■ Be prepared for mosquitoes from June through August

Trail Description: Rocky trail with plenty of roots to step over. Start at the Missouri Lks trailhead. Proceed west on Missouri Lks Trail (#2003) to Missouri Lakes. Continue on this trail over Missouri Pass and to the junction of the Fancy Creek Trail (#2006). Take the Fancy Crk trail east over Fancy Pass to Fancy Lk. Continue east to the Fancy Crk trailhead. Walk the short distance to the Missouri Lakes Trailhead. **TIP:** Contact the Holy Cross Ranger District for trail updates.

Highlights: ■ The views ■ Great fishing ■ Abundant creeks, ponds and alpine lakes
■ Two high mountain passes ■ Meadows full of wildflowers (peak in mid July to mid August) ■ Rugged mountains ■ Long glacial valleys ■ Steep ridges
■ Fragile tundra ■ Bridge crossings over cascading creeks ■ Dramatic gorges
■ Fragrant conifer forest ■ Rocky benches

Visit us in the REI DENVER FLAGSHIP STORE

OUTDOOR RECREATION INFORMATION CENTER ■ 1416 Platte Street ■ Denver CO 80202
Ask us. We'll Tell You Where To Go ■ www.oriconline.org ■ Updated: 11-17-2017

Follow us on: ■ facebook.com/oriccolorado ■ Twitter: @oricbryan



Missouri Lakes and Fancy Pass Loop

369000m E.

370000m E.

371000m E.

372000m E.

WGS84 Zone 13S 374000m E.

43 65000m N.

43 64000m N.

43 63000m N.

43 62000m N.

43 61000m N.

43 60000m N.

43 65000m N.

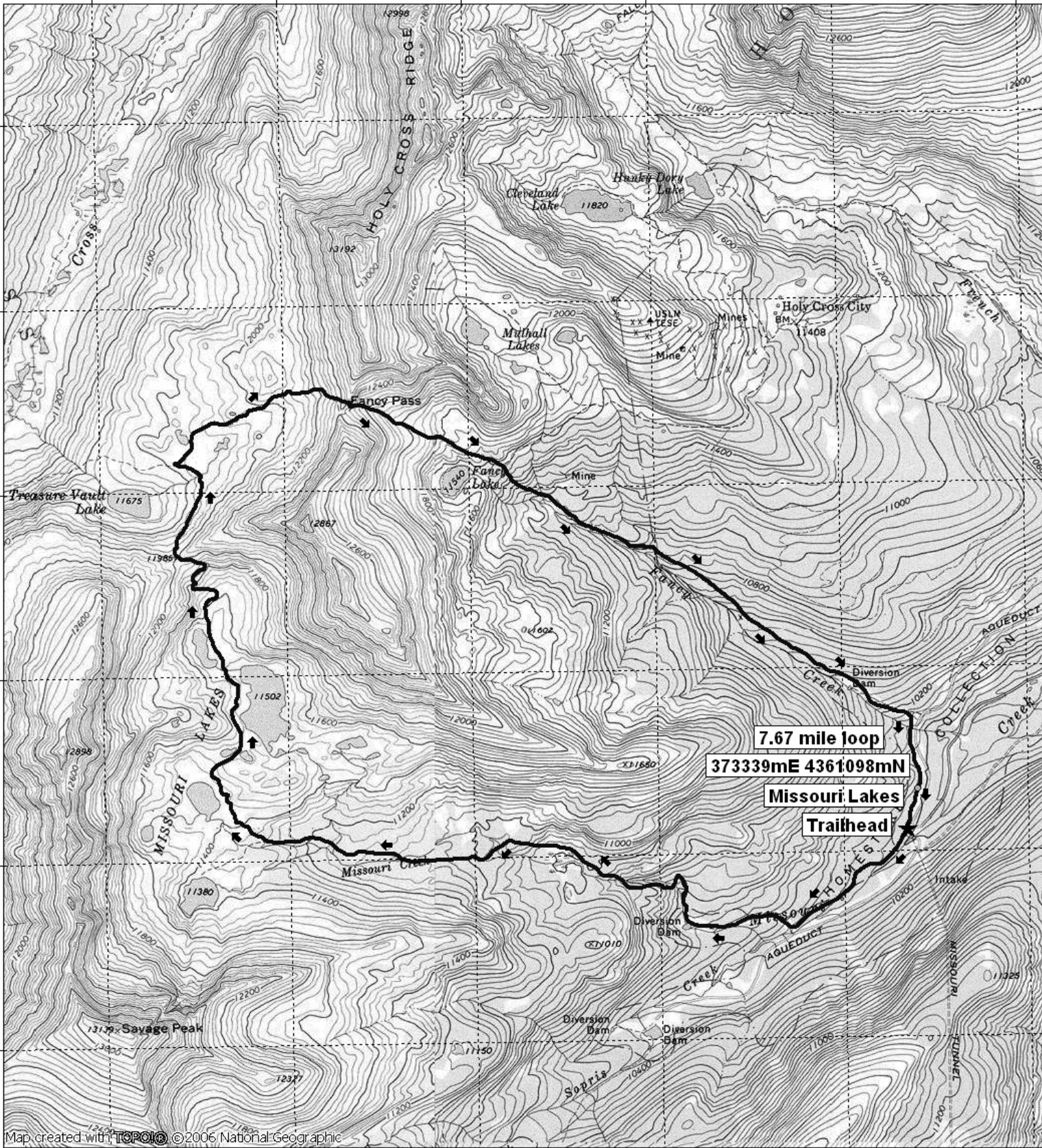
43 64000m N.

43 63000m N.

43 62000m N.

43 61000m N.

43 60000m N.



Map created with **TOPOLIC** © 2006 National Geographic

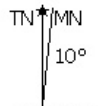
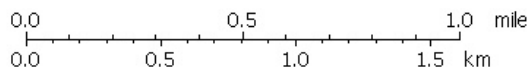
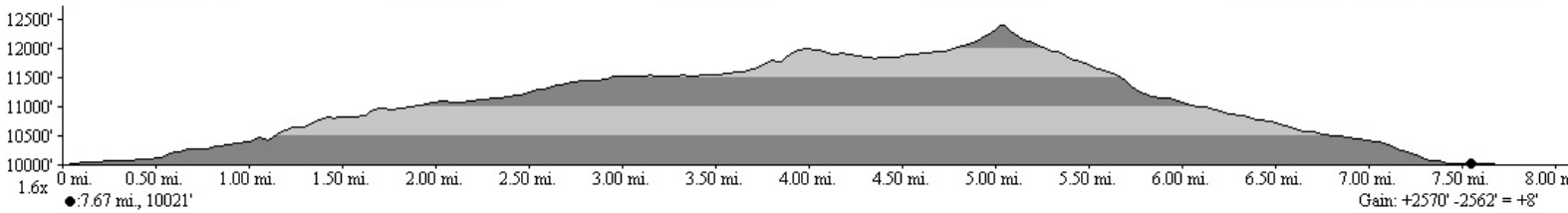
369000m E.

370000m E.

371000m E.

372000m E.

WGS84 Zone 13S 374000m E.



02/22/08