

PINE CREEK TRAIL TO SILVER KING LAKE



BACKPACKING TRIP

FYI: The map on the reverse side is for general orientation, not for navigation.
P.S. Get and post trail updates at www.facebook.com/oriccolorado

Location: Collegiate Pks Wilderness
San Isabel National Forest
Apx 20 miles S of Leadville

Contact Info: Leadville Ranger District
719-486-0749
www.fs.fed.us/r2

Length: 11.55 miles one-way (estimate using Nat'l Geo Mapping Software)

Time: Multi-day backpack. The average person hikes apx. 2 miles an hour. Adjust your time +/- based on terrain, trail and weather conditions and your skill and fitness level.

Elevation Gain/Loss: See trail profile on reverse side

Difficulty: Easy to Moderate

Trail Users: Hikers and wildlife

Season: Early July to late September

Dogs: On hand-held leash

Permits: None required

Getting There From Denver: Take I-70 west to US Highway 24. Travel south on US Highway 24 and then approximately 18 ½ miles south of Leadville. Turn right on to Chaffee County Road 388 and drive a little over a mile to the Pine Creek trailhead.

Maps: National Geographic Trails Illustrated # 129 (the trailhead is on the east side of the map at the top left corner) or # 148E and or the USGS Mount Harvard 7.5 topographic map. **IMPORTANT:** Stay found with the aid of a topographic map, a compass, a GPS receiver and the skill to use them.

Safety Considerations and Supplemental Info: ■ Get current weather and fire restrictions at www.oriconline.org ■ Be prepared for mosquitoes from July through Sept

Trail Description: The Pine Creek Trail (FDT #1467) starts by passing through a small stretch of private property. At last report the landowner charges \$1.00 per person and \$2.00 per 4 legged friend. The trail follows a creek and through some forested land on its way to some meadows and views of high mountain peaks beyond. The trail continues to Bedrock Falls and to some alpine lakes at the end of the trail. The trail gets moderate use on the weekends. **TIP:** Contact the Salida Ranger District for trail updates and current conditions.

Highlights: ■ Historic Littlejohn's Cabin ■ Bedrock Falls ■ Proximity to six fourteeners
■ Views of the Continental Divide ■ Alpine Meadows ■ Sweeping view of the Peaks
■ Historical mining ruins ■ A creek that parallels the trail most of way to the alpine lakes
■ Beaver ponds

© 2007 ORIC All rights reserved.

Visit us in the REI DENVER FLAGSHIP STORE

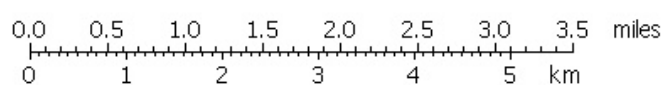
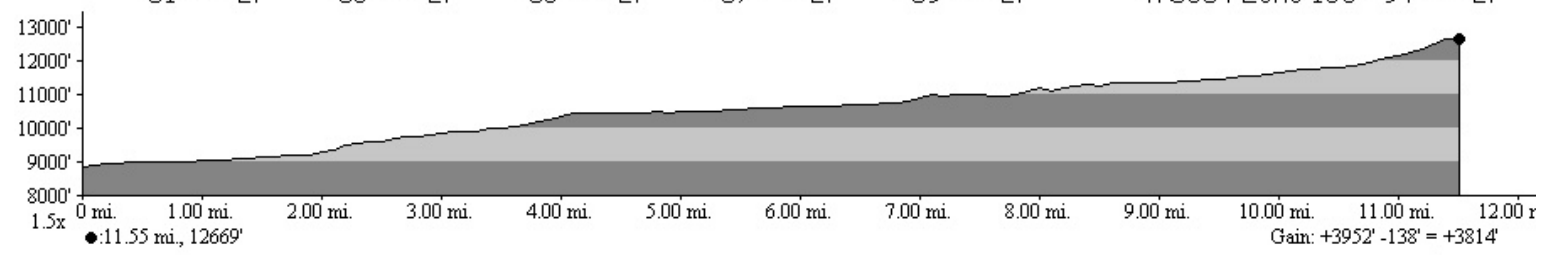
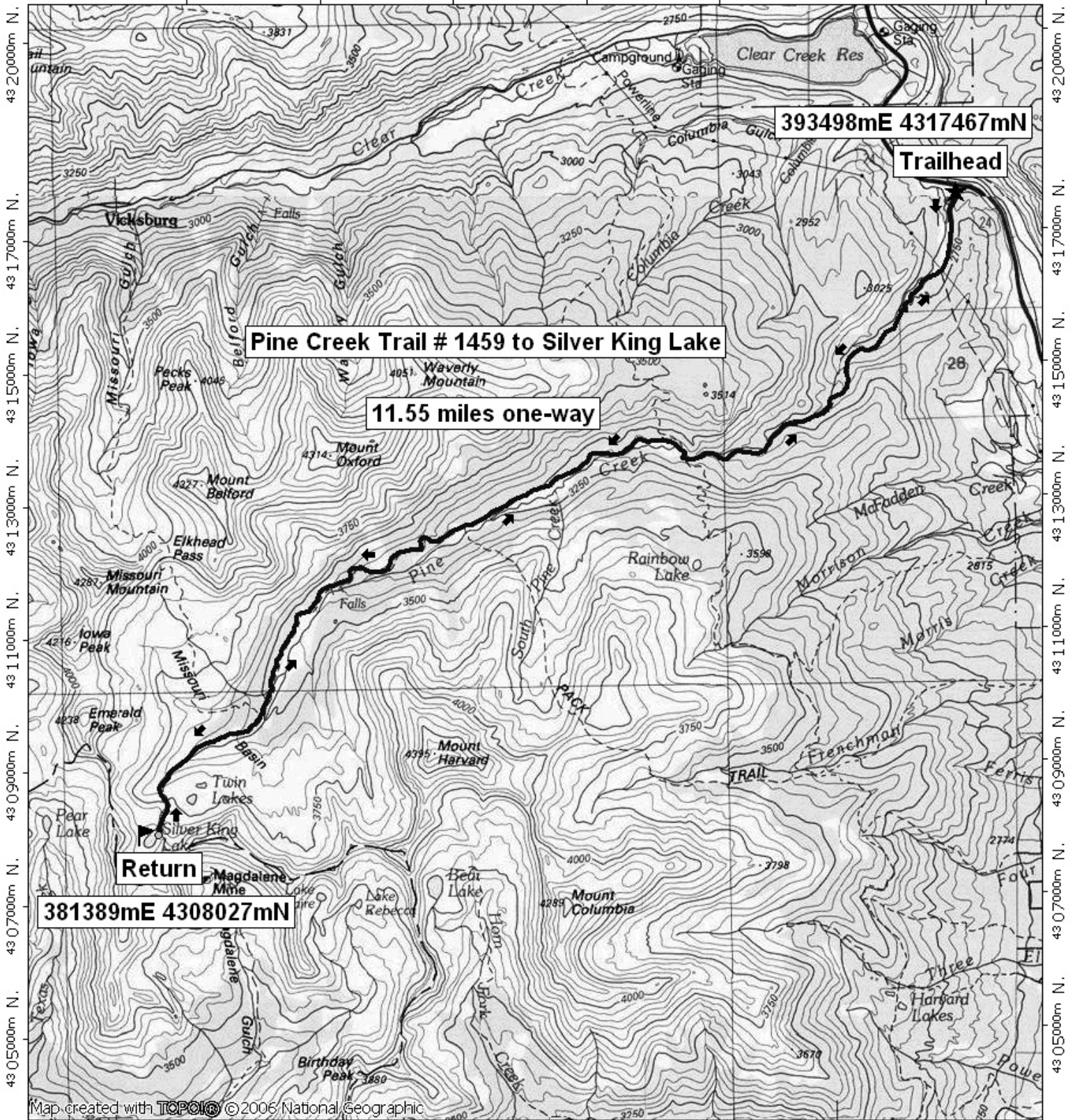
OUTDOOR RECREATION INFORMATION CENTER ■ 1416 Platte Street ■ Denver CO 80202
Ask us. We'll Tell You Where To Go ■ www.oriconline.org ■ Updated: 11-17-2017

Follow us on: ■ facebook.com/oriccolorado ■ Twitter: @oricbryan



Pine Creek Trail to Silver King Lake Backpacking Trip_Final Map

382000m E, 384000m E, 386000m E, 388000m E, 390000m E, WGS84 Zone 13S 394000m E.



TN ↑ MN
 10°
 06/25/08