

# RICH CREEK & ROUGH AND TUMBLE LOOP



## BACKPACKING TRIP

**FYI:** The map on the reverse side is for general orientation, not for navigation.  
**P.S.** Get and post trail updates at [www.facebook.com/oriccolorado](http://www.facebook.com/oriccolorado)

**Location:** Buffalo Peaks Wilderness  
Pike National Forest  
South of Leadville

**Contact Info:** South Park Ranger District  
719-836-2031  
[www.fs.fed.us/r2](http://www.fs.fed.us/r2)

**Length:** 11.72 mile loop (estimate using Nat'l Geo Mapping Software)

**Duration:** Overnight with multi-day backpack opportunities. The average person hikes apx. 2 miles an hour. Adjust your time +/- based on terrain, trail and weather conditions and your skill and fitness level.

**Elevation Gain/Loss:** See trail profile on reverse side

**Difficulty:** Easy to Moderate

**Trail Users:** Hikers, anglers, equestrians, stock animals and wildlife

**Season:** June through September

**Dogs:** On hand-held leash

**Permits:** None required

**Getting There From Denver:** US Hwy 285 W. to Fairplay. Go apx. 5 miles S. of Fairplay and turn right on the Weston Pass Rd (a.k.a. Park County Rd 5). Drive apx. 7 miles and turn right at the major fork on to Park County Rd 22 (a.k.a. Forest Rd 425) and continue 2.9 miles to the signed Rich Creek trailhead.

**Maps:** National Geographic Trails Illustrated #110 and or the South Peak and Jones Hill 7.5 Topographic Maps. **IMPORTANT:** Stay found with the aid of a topographic map, a compass, a GPS receiver and the skill to use them.

**Safety Considerations and Supplemental Info:** ■ Thunderstorms and lightning in high, exposed areas ■ Treat water drawn from sources along the trail ■ Trail can be very muddy in the Spring and into early Summer ■ Check [www.oriconline.org](http://www.oriconline.org) for fire restrictions

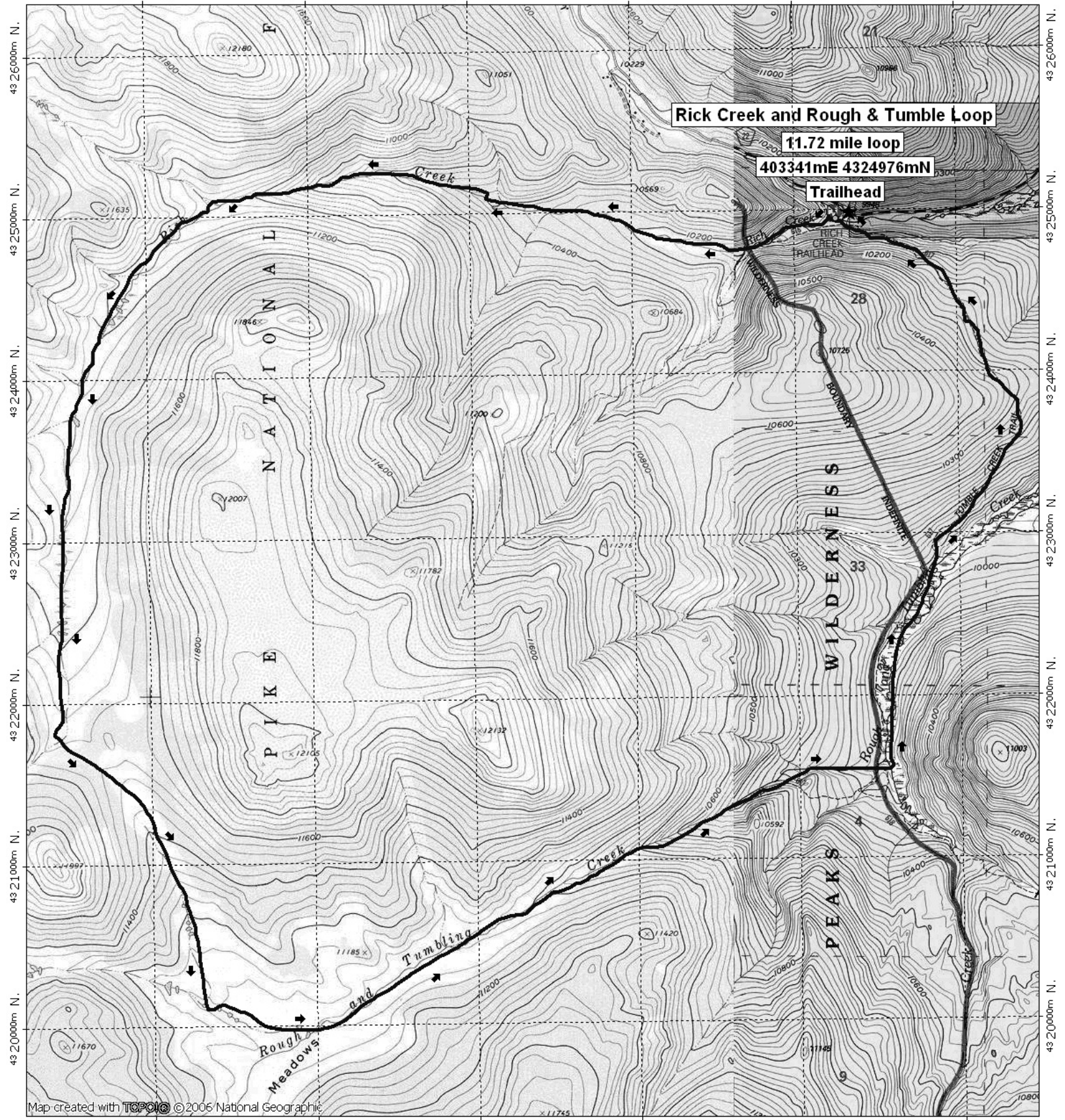
**Trail Description:** This loop trail does not feature close in views of snowcapped peaks or mountain lakes. This trip is for big, open meadows, creeks and abundant beaver ponds. This loop hike combines the Rich Creek Trail #616 and Tumble Creek Trail #617. Recommend you go counterclockwise starting with the Rich Creek Trail. The Rich Creek Trail follows an easy grade along a slow, meandering stream to big, open meadows. The Rough and Tumble section travels downhill most of the way and then up for about a mile to the trails end. The trailhead parking area is small accommodating approximately 10 cars. **TIP:** Contact the South Park Ranger District for trail updates.

**Highlights:** ■ Cabin remains along the trail ■ Wildlife viewing ■ Large meadows  
■ Beaver ponds ■ Scenic drainages ■ Cascades and waterfalls in proximity to the trail  
■ Travel through dense and fragrant forests ■ Lush green meadows  
■ Fragrant stands of willows and aspens ■ Great fishing

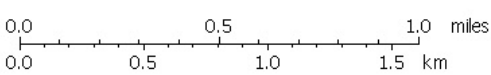
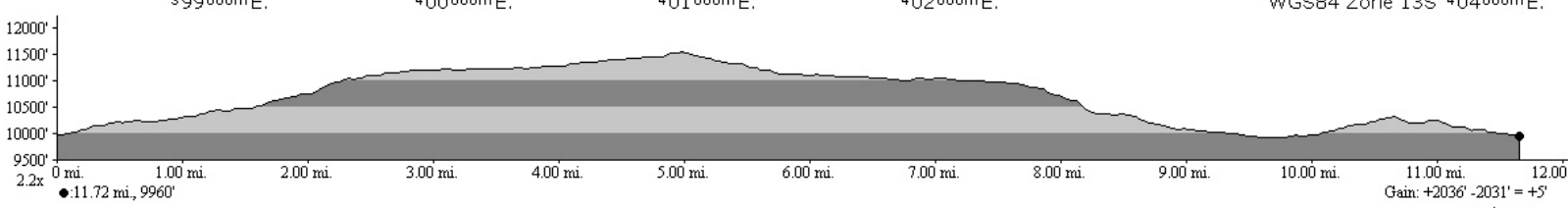


# Rich Creek and Rough & Tumble Loop

399000m E, 400000m E, 401000m E, 402000m E, 403000m E, WGS84 Zone 13S 404000m E



Map created with **TOPOLINK** © 2005 National Geographic



TN ↑ MN  
10°