

COLORADO TRAIL @ KENOSHA PASS



FYI: The map on the reverse side is for general orientation, not for navigation.
P.S. Get and give trail updates at www.facebook.com/oriccolorado

DAY HIKE

Location: Pike National Forest
 Access from Kenosha Pass

Contact Info: South Park Ranger District
 719-836-2031
www.fs.fed.us/r2

Length: 4.06 miles one-way (estimate using the Nat'l Geo Mapping Software)

Time: The average person hikes approximately 2 miles an hour. Adjust your time +/- based on terrain and weather conditions and your skill and fitness level and whether you are hiking or trail running.

Elevation Gain/Loss: See trail profile on reverse side

Difficulty: Easy

Season: June through mid-October

Trail Users: Hikers, cyclists, equestrians and wildlife

Dogs: On hand-held leash

Permits: None required

Getting There From Denver: Take U.S. Highway 285 for about 58 miles SE of the Denver Area. The Kenosha Pass Campground is on the right. The Colorado Trail is visible from the highway just past the campground entrance. Park alongside the highway, not at the campground.

Maps: National Geographic Trails Illustrated # 105W. **IMPORTANT:** Stay found with the aid of a topographic map, compass, GPS receiver and the skill to use them.

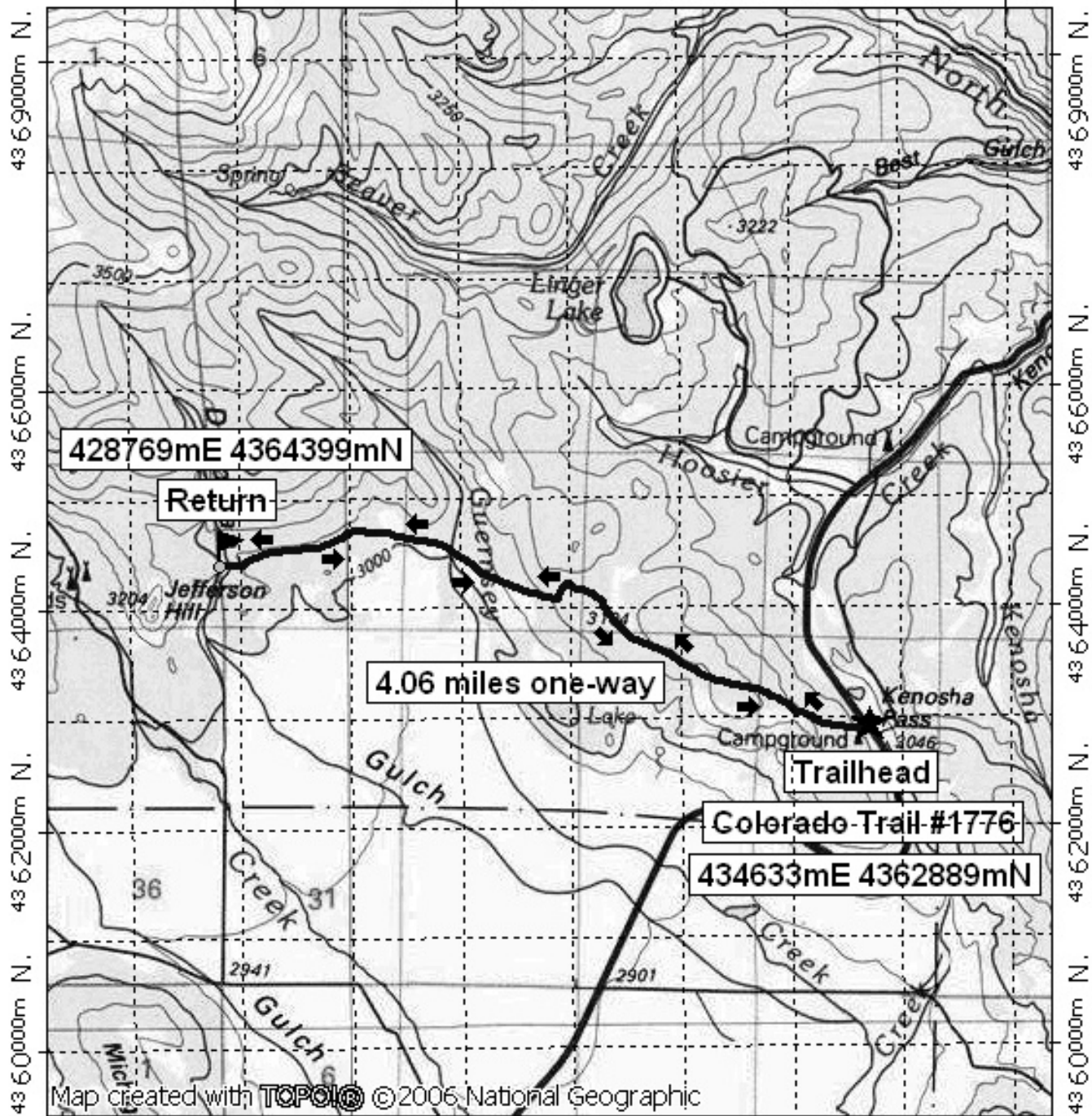
Safety Considerations and Supplemental Info: ■ Afternoon thunderstorms and lightning ■ Potential for altitude sickness ■ Check www.oriconline.org for fire restrictions ■ Prepare for mosquitoes from May through September

Trail Description: There is a register at the beginning of the trail. Pass under a power line after about ½ mile and onto a forested ridge. Continue until you cross a road and then cross Deadman Creek on a bridge. **TIP:** Contact the South Park Ranger District for trail updates.

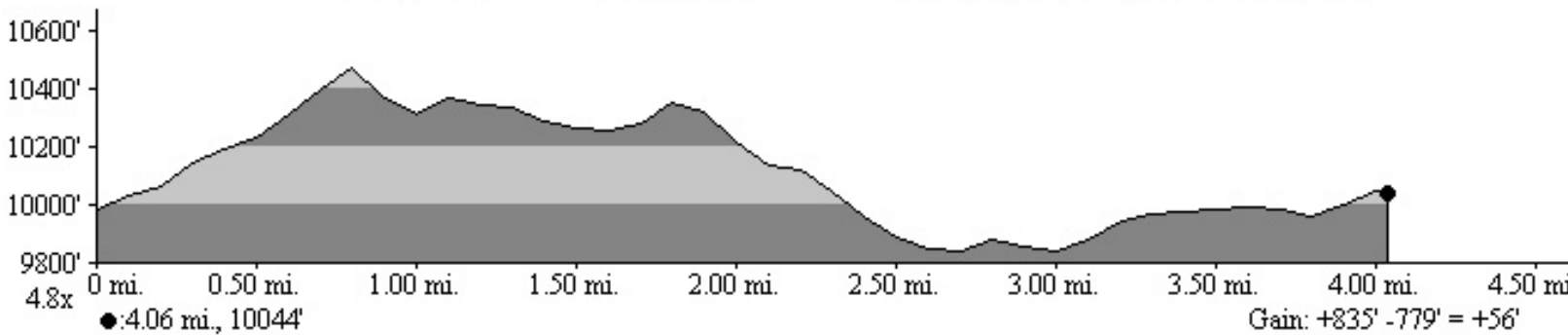
Highlights: ■ Beautiful views of South Park ■ Trail goes through several outstanding stands of Aspen ■ Good September hike

Colorado Trail @ Kenosha Pass Day Hike

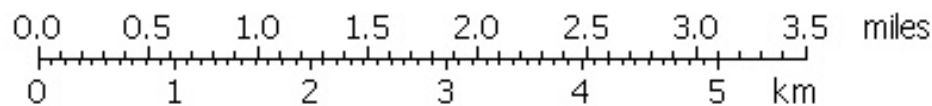
429000m E, 431000m E, WGS84 Zone 13S 436000m E.



429000m E, 431000m E, WGS84 Zone 13S 436000m E.



**NATIONAL
GEOGRAPHIC**



TN MN
9 1/2°
05/01/08