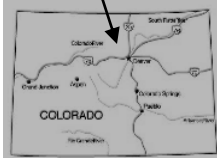


FOREST LAKES

DAY HIKE



FYI: The map on the reverse side is for general orientation, not for navigation.
P.S. Get and give trail updates at www.facebook.com/oriccolorado

Location: James Peak Wilderness
Arapaho National Forest
E. Portal of Moffat Tunnel

Contact Info: Boulder Ranger District
303-541-2500
www.fs.fed.us/r2

Length: 3.58 miles one-way (estimate using the Nat'l Geo Mapping Software)

Time: The average person hikes approximately 2 miles an hour. Adjust your time +/- based on terrain and weather conditions and your skill and fitness level and whether you are hiking or trail running. GPS drive time is approximately 1:20 from the REI Flagship Store-Denver.

Elevation Gain/Loss: See trail profile on reverse side

Difficulty: Moderate to Strenuous

Trail Users: Hikers and wildlife

Season: July through October

Dogs: On hand held leash

Permits: Yes, self-issued wilderness permits at the trailhead

Getting There From Denver: Take I -70 west to CO Highway 119 (exit 244). Go north on CO Highway 119 to Rollinsville. Go west on Gilpin County Road 16 to the large parking area at the East Portal of the Moffat Tunnel.

Maps: National Geographic Trails Illustrated # 103E and or the East Portal USGS topographic map. **IMPORTANT:** Stay found with the aid of a topographic map, a compass, a GPS receiver and the skill to use them.

Safety Considerations and Supplemental Info: ■ Start can be windy out of the parking lot ■ Potential for altitude sickness for those not acclimatized ■ Afternoon thunderstorms and lightning ■ Check www.oriconline.org for fire restrictions ■ Prepare for mosquitoes from July through September

Trail Description: Gradual ascent up a valley along a stream under a canopy of trees. The trail begins at the East Portal. Start this trip on the South Boulder Creek Trail #900. After apx. 1 mile turn right onto the Forest Lakes Trail #809. Stay on the Forest Lakes Trail to the lakes. **TIP:** Contact the Boulder Ranger District for trail updates.

Highlights: ■ Great views of the Continental Divide ■ Good fishing ■ Sensitive alpine tundra ■ Meadows carpeted with wildflowers ■ Dense subalpine forest ■ Bubbling creeks along the trail

© 2007 ORIC. All rights reserved.

Visit us in the REI DENVER FLAGSHIP STORE

OUTDOOR RECREATION INFORMATION CENTER ■ 1416 Platte Street ■ Denver CO 80202

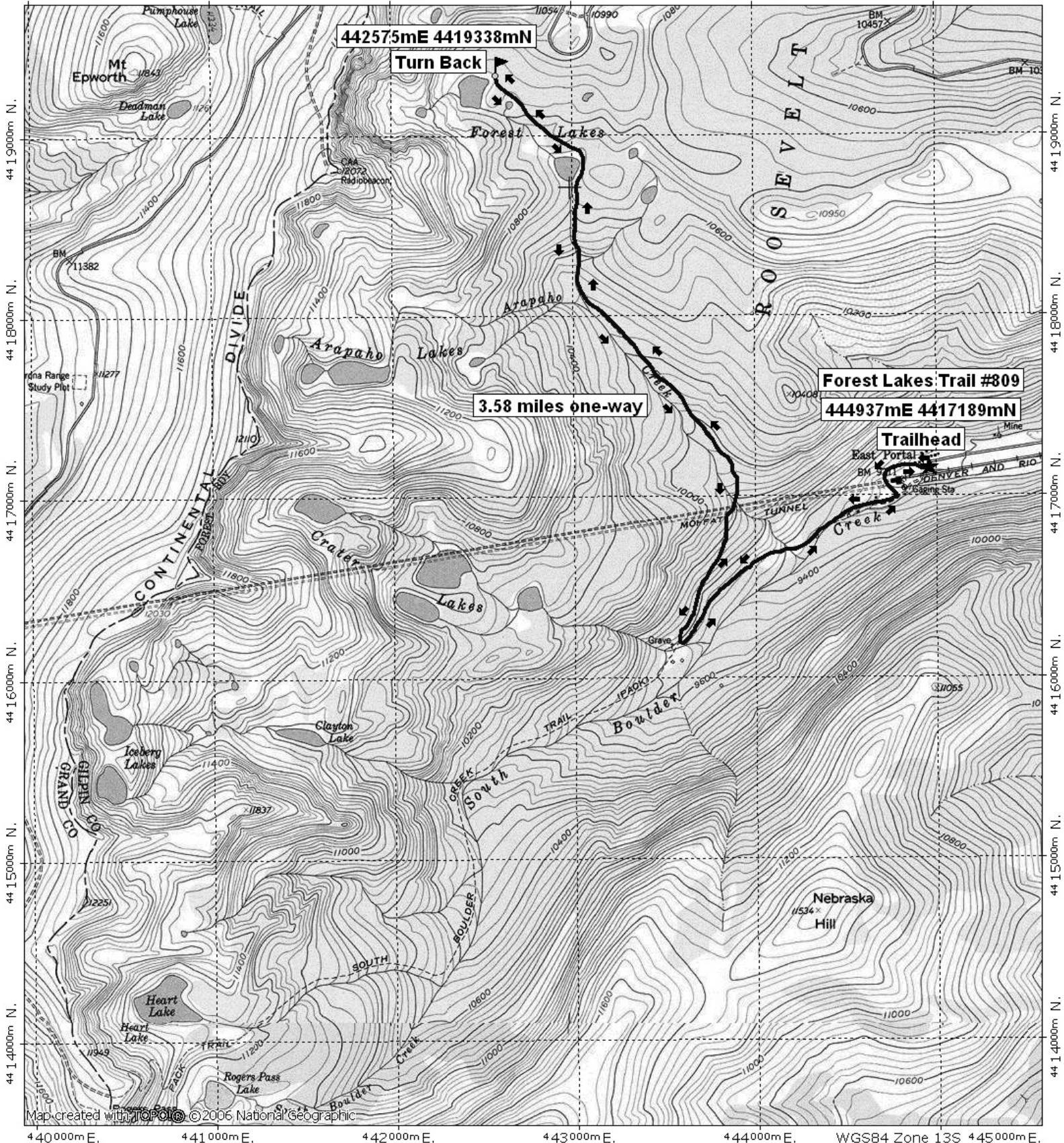
Ask us. We'll Tell You Where To Go ■ www.oriconline.org ■ Updated: 2-4-2018

Follow us on: ■ facebook.com/oriccolorado ■ Twitter: @oricbryan



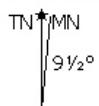
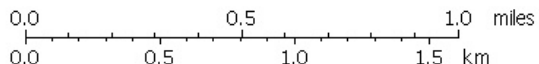
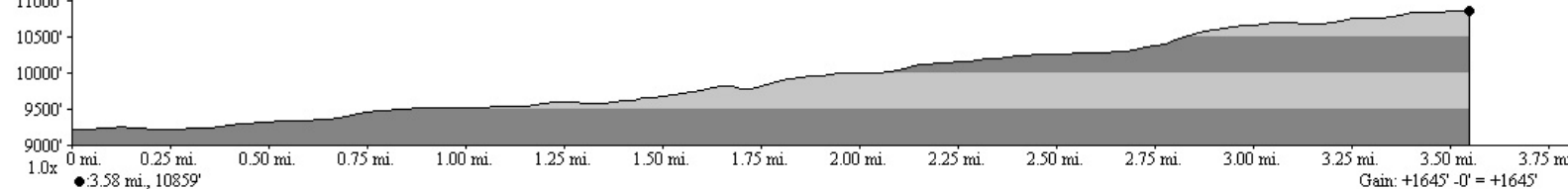
Forest Lakes Day Hike

440000m E, 441000m E, 442000m E, 443000m E, 444000m E, 445000m E, WGS84 Zone 13S



Map created with TopoTools © 2006 National Geographic

440000m E, 441000m E, 442000m E, 443000m E, 444000m E, 445000m E, WGS84 Zone 13S



05/01/08