

GIBSON LAKE TRAIL

DAY HIKE

FYI: The map on the reverse side is for general orientation, not for navigation. **P.S.** Get and post trail updates at www.facebook.com/oriccolorado

Location: Pike National Forest
In Park County
Northwest of Webster

Contact Info: South Platte Ranger District
303-275-5610
www.fs.fed.us/r2

Length: 2.29 miles one-way (estimate using the Nat'l Geo Mapping Software)

Time: The average person hikes approximately 2 miles an hour. Adjust your time +/- based on terrain and weather conditions and your skill and fitness level and whether you are hiking or trail running. GPS drive time is approximately 1:20 from the REI Flagship Store-Denver.

Difficulty: Moderate

Trail Users: Hikers

Season: Mid to late June through early October

Elevation Gain/Loss: See trail profile on reverse side

Dogs: On hand-held leash

Permits: None required

Getting There From Denver: Take US Highway 285 west to Webster. At Webster turn right (north/northwest) on Park County Road 60. Continue on Park County Road 60 (Forest Road 120) to Hall Valley and the Hand Cart Campgrounds. At this point, take Forest Road 120C (a rocky, high clearance, 4-wheel drive road) 1.4 miles to the Gibson Lake trailhead.

Maps: National Geographic Trails Illustrated #104W. **IMPORTANT:** Stay found with the aid of a topographic map, a compass, a GPS receiver and the skill to use them.

Safety Concerns and Supplemental Info: ■ We suggest leaving your hiking itinerary with someone who will be awaiting your return ■ Afternoon thunderstorms and lightning ■ Prepare for mosquitoes from June through September

Trail Description: This is a maintained Forest Service Trail (FDT 633). **TIP:** Contact the South Platte Ranger District for trail updates and road conditions.

Highlights: ■ Reportedly good trout fishing ■ Seasonal wildflowers ■ Access to Whale Peak and the Continental Divide Trail.

Visit us in the REI DENVER FLAGSHIP STORE

OUTDOOR RECREATION INFORMATION CENTER ■ 1416 Platte Street ■ Denver CO 80202

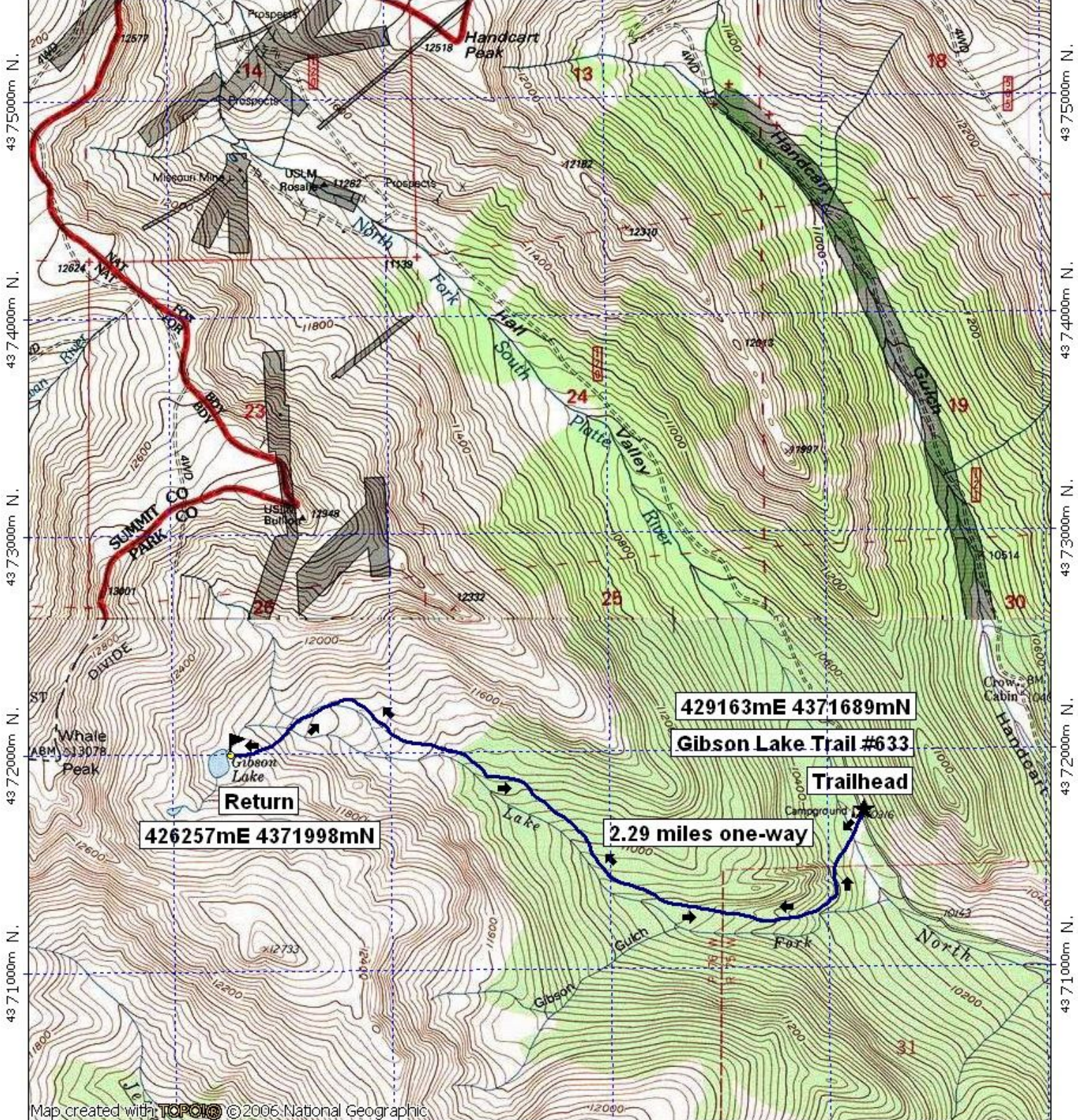
Ask us. We'll Tell You Where To Go ■ www.oriconline.org ■ Updated: 2-4-2018

Follow us on: ■ facebook.com/oriccolorado ■ Twitter: @oricbryan

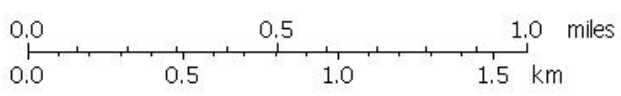
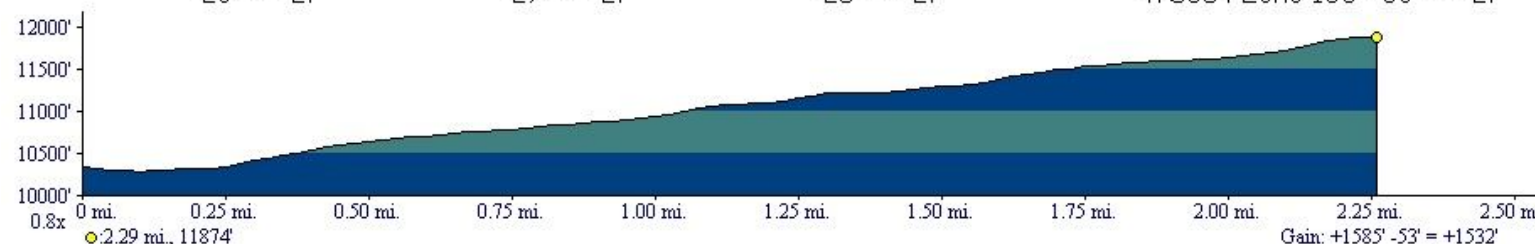


Gibson Lake Trail

426000m E, 427000m E, 428000m E, WGS84 Zone 13S 430000m E.



Map created with TOPOIG © 2006 National Geographic



TN MN
9 1/2°
06/04/08