

PITKIN LAKE

DAY HIKE

FYI: The map on the reverse side is for general orientation, not for navigation.

P.S. Get and give trail updates at www.facebook.com/oriccolorado

Location: Eagles Nest Wilderness
White River National Forest
Near East Vail

Contact Info: Holy Cross Ranger District
970-827-5715
www.fs.fed.us/r2

Length: 4.49 miles one-way (estimated mileage rounded to the nearest ¼ mile)

Time: The average person hikes approximately 2 miles an hour. Adjust your time +/- based on terrain and weather conditions and your skill and fitness level and whether you are hiking or trail running.

Season: July through September

Elevation Gain/Loss: See trail profile on reverse side

Difficulty: Moderate to Strenuous

Trail Users: Hikers, pikas and marmots

Dogs: On hand-held leash

Permits: Free use permit at trailhead

Getting There From Denver: Turn off I-70 at Exit 180 for Vail East Entrance. Head east along the north frontage road for approximately a quarter of a mile. A small parking area lies to the north (left) of the road immediately after you have crossed Pitkin Creek. The road ends just past the trailhead at some condos and townhouses.

Maps: National Geographic Trails Illustrated #108W, Latitude 40 Summit County Trails and or Vail East USGS topographic map. **IMPORTANT:** A topographic map, compass and a GPS receiver will aid you in staying found.

Safety Considerations and Supplemental Info: ■ Thunderstorms and lightning ■ It's easy to lose your footing when the trail is wet ■ Prepare for mosquitoes from July through September

Trail Description: The Pitkin Lake Trail #2012 starts off with a steep ascent and numerous switchbacks. Pitkin Lake (11,400 ft) is usually frozen until early July.

SUGGESTION: Check with the Holy Cross Ranger District for trail updates

Highlights: ■ High alpine lake ■ Abundant wildflowers in July and August ■ two waterfalls along the trail (one is a braided horsetail waterfall) ■ Stands of Aspen ■ Presence of wildlife ■ Good fishing ■ Valley Views ■ Lake situated in a cirque at the head of a valley ■ Lake directly below two thirteeners ■ Aquamarine, teardrop shaped Pitkin Lake ■ Bubbling Pitkin Creek ■ Fragrant conifers ■ Fragrant pines, spruces and firs ■ Aspen glades ■ Numerous streams and brooks ■ Finding the diminutive and less common red columbine in the Spring

© 2007 ORIC All rights reserved.

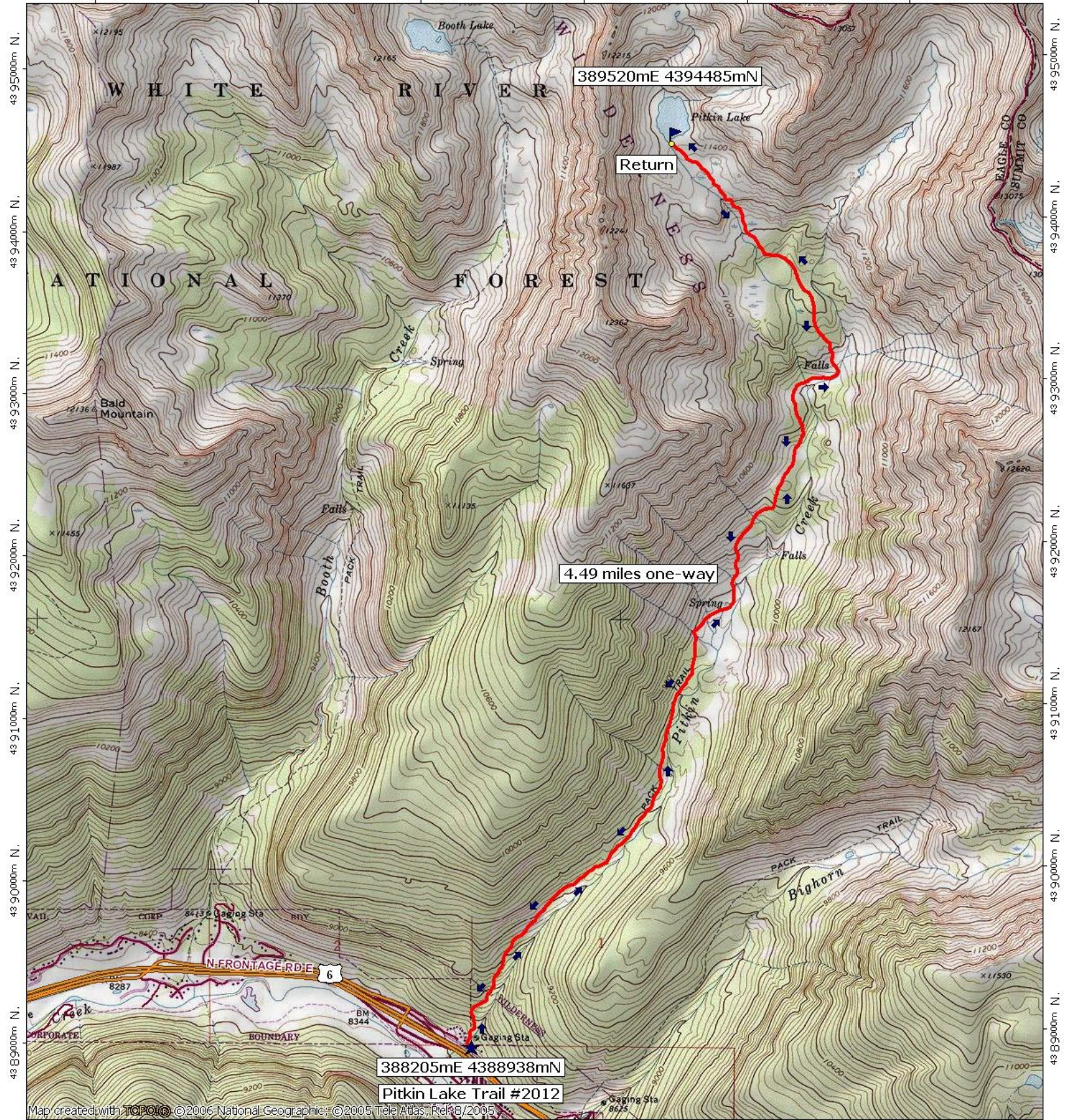
Visit us in the REI DENVER FLAGSHIP STORE

OUTDOOR RECREATION INFORMATION CENTER ■ 1416 Platte Street ■ Denver CO 80202

Ask us. We'll Tell You Where To Go ■ www.oriconline.org ■ Updated: 2-7-2018

Follow us on: ■ facebook.com/oriccolorado ■ Twitter: @oricbryan





Map created with **TOPOLIC** © 2005 National Geographic, © 2005 Tele Atlas, RCR8/2005

388205mE 4388938mN
Pitkin Lake Trail #2012

