

WIGWAM CREEK TO WIGWAM PARK



DAY HIKE

FYI: The map on the reverse side is for general orientation, not for navigation.
P.S. Get and give trail updates at www.facebook.com/oriccolorado

Location: Lost Creek Wilderness
Pike National Forest
West of Deckers

Contact Info: South Platte Ranger District
303-275-5610
www.fs.fed.us/r2

Length: 3.20 miles one-way (estimate using the Nat'l Geo Mapping Software)

Time: The average person hikes approximately 2 miles an hour. Adjust your time +/- based on terrain and weather conditions and your skill and fitness level and whether you are hiking or trail running.

Season: June through October

Elevation Gain: See trail profile on reverse side

Difficulty: Moderate

Trail Users: Hikers, equestrians, anglers and wildlife

Dogs permitted: On hand-held leash

Permits: Free use permit at the trailhead

Getting There From Denver: Take US Highway 285 Southwest to Pine Junction. Turn left at the stop light and take Park County Road 126 (Pine Highway) 21.9 miles to the Cheesman Canyon Trailhead and Parking Area. Drive .2 miles past the Cheesman Canyon Trailhead and Parking Area and turn right onto Forest Road (FR) 211 (dirt road on your right). Follow FR 211 2.1 miles to the intersection with FR 211.0 (gated). Stay right to continue on FR 211. Follow FR 211 1 mile to the next fork. Take the right fork onto FR 560. Follow FR 560 1.5 miles to the intersection with FR 541 (Flying G Road). Stay to the right to continue on FR 560. Follow FR 560 2.6 miles to the intersection with FR 545. Turn left and follow this road 1.2 miles to the Wigwam Trailhead.

Maps: National Geographic Trails Illustrated #105 (East Side of Map) or 135 (East Side of Map). **IMPORTANT:** Stay found with the aid of a topographic map, compass, GPS receiver and the skill to use them.

Safety Considerations: ■ Afternoon thunderstorms and lightning ■ Prepare for mosquitoes from June through August ■ High water in the Spring

Trail Description: Wigwam Trail #609 gradually ascends through forested hillsides as you head west paralleling Wigwam Creek. You'll cross Wigwam Creek apx. 9 times on your way to a series of alpine beaver ponds and meadows. This is a perfect place for a relaxing lunch before you return to your car. **TIP:** Contact the South Platte Ranger District for trail updates.

Highlights: ■ Granite domes suitable for rock climbing ■ Creek fishing
■ Wigwam Park ■ Wigwam Creek accompanies you the entire way ■ You'll pass through a mixed forest comprised of Douglas Fir, Engelmann Spruce, Ponderosa Pine, Limber Pine, Lodgepole Pines and Quaking Aspens.

© 2007 ORIC All rights reserved.

Visit us in the REI DENVER FLAGSHIP STORE

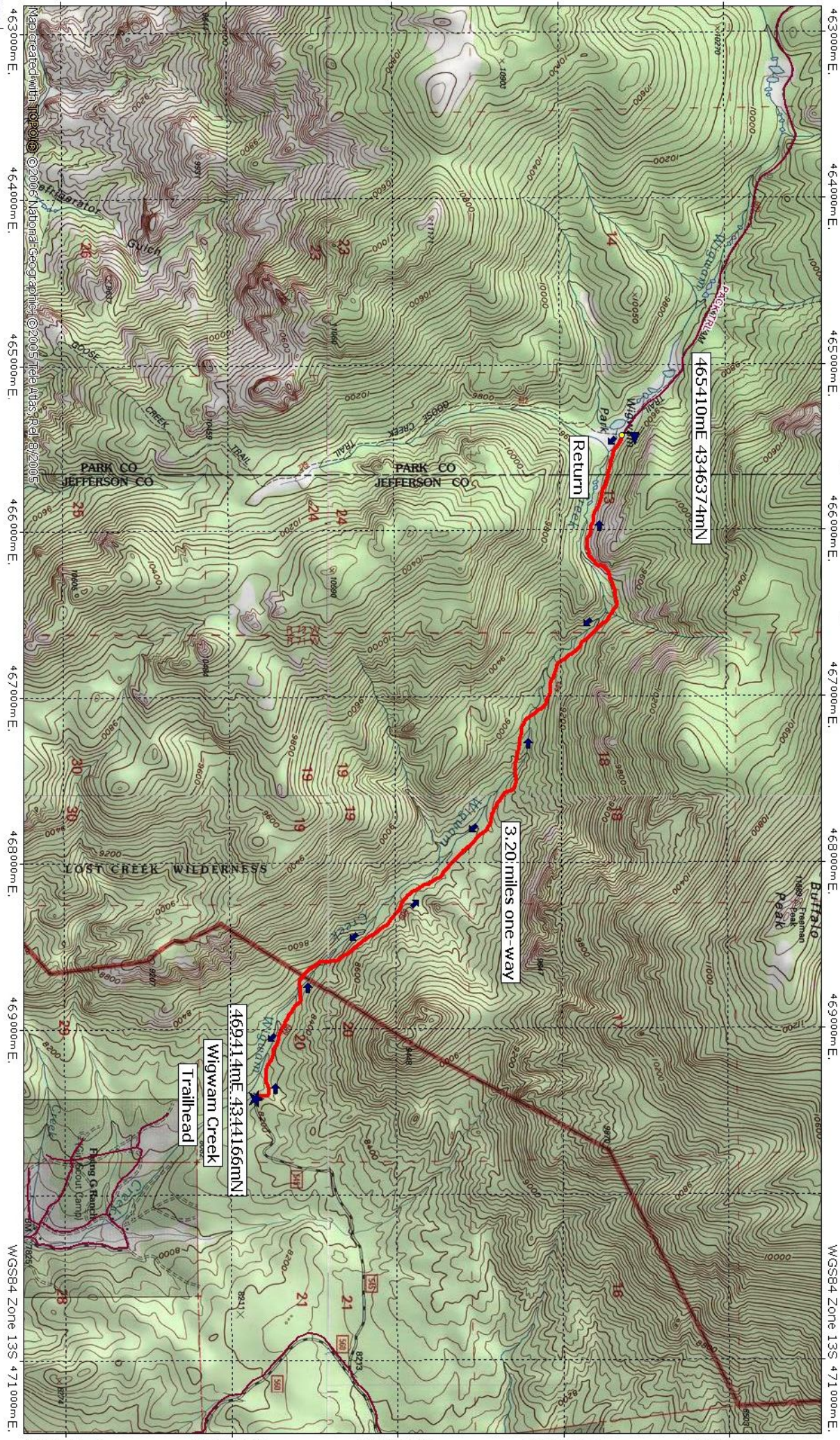
OUTDOOR RECREATION INFORMATION CENTER ■ 1416 Platte Street ■ Denver CO 80202

Ask us. We'll Tell You Where To Go ■ www.oriconline.org ■ Updated: 2-7-2018

Follow us on: ■ facebook.com/oriccolorado ■ Twitter: @oricbryan



03/28/09 "Wigwam Creek to Wigwam Park.tpo" 467139mE 4345165mN Zone 13S WGS84

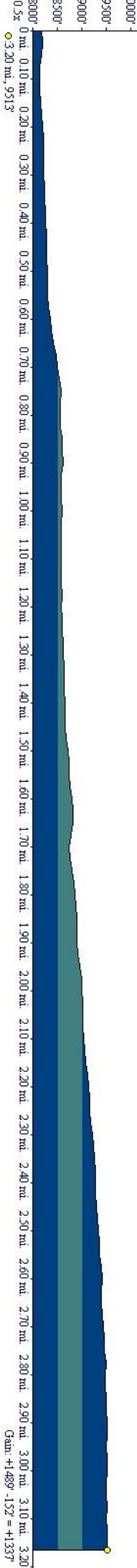


465410mE 4346374mN

Return

3.20 miles one-way

469414mE 4344166mN
Wigwam Creek
Trailhead



Map created with 100000 © 2006 National Geographic © 2005 Tele Atlas, Rel. 8/2005
8000' 0 mi. 0.10 mi. 0.20 mi. 0.30 mi. 0.40 mi. 0.50 mi. 0.60 mi. 0.70 mi. 0.80 mi. 0.90 mi. 1.00 mi. 1.10 mi. 1.20 mi. 1.30 mi. 1.40 mi. 1.50 mi. 1.60 mi. 1.70 mi. 1.80 mi. 1.90 mi. 2.00 mi. 2.10 mi. 2.20 mi. 2.30 mi. 2.40 mi. 2.50 mi. 2.60 mi. 2.70 mi. 2.80 mi. 2.90 mi. 3.00 mi. 3.10 mi. 3.20 mi. 3.30 mi. 3.40 mi. 3.50 mi. 3.60 mi. 3.70 mi. 3.80 mi. 3.90 mi. 4.00 mi. 4.10 mi. 4.20 mi. 4.30 mi. 4.40 mi. 4.50 mi. 4.60 mi. 4.70 mi. 4.80 mi. 4.90 mi. 5.00 mi. 5.10 mi. 5.20 mi. 5.30 mi. 5.40 mi. 5.50 mi. 5.60 mi. 5.70 mi. 5.80 mi. 5.90 mi. 6.00 mi. 6.10 mi. 6.20 mi. 6.30 mi. 6.40 mi. 6.50 mi. 6.60 mi. 6.70 mi. 6.80 mi. 6.90 mi. 7.00 mi. 7.10 mi. 7.20 mi. 7.30 mi. 7.40 mi. 7.50 mi. 7.60 mi. 7.70 mi. 7.80 mi. 7.90 mi. 8.00 mi. 8.10 mi. 8.20 mi. 8.30 mi. 8.40 mi. 8.50 mi. 8.60 mi. 8.70 mi. 8.80 mi. 8.90 mi. 9.00 mi. 9.10 mi. 9.20 mi. 9.30 mi. 9.40 mi. 9.50 mi. 9.60 mi. 9.70 mi. 9.80 mi. 9.90 mi. 10.00 mi.
0.32 0.32 mi., 9513
WGS84 Zone 13S 471000m E



NATIONAL GEOGRAPHIC



03/28/09
TN
10°