

BEN TYLER TRAIL



DAY HIKE

FYI: The map on the reverse side is for general orientation, not for navigation.
P.S. Get and give trail updates at www.facebook.com/oriccolorado

Location: Lost Creek Wilderness
 Pike National Forest

Contact Info: South Platte Ranger District
 303-275-5610
www.fs.fed.us/r2

Length: 5.89 miles one-way (estimate using the Nat'l Geo Mapping Software)

Time: The average person hikes approximately 2 miles an hour. Adjust your time +/- based on terrain and weather conditions and your skill and fitness level and whether you are hiking or trail running.

Elevation Gain/Loss: See trail profile on reverse side

Difficulty: Moderate to strenuous

Season: Mid-June to mid-October

Trail Users: Hikers, equestrians, mule deer and elk

Dogs: Under owner's control

Permits: Wilderness permits self-issued at trailhead

Getting There From Denver: Take U.S. Highway 285 west. Drive approximately 8 miles past Bailey on U.S. Highway 285. Trailhead parking is on your left.

Maps: National Geographic Trails Illustrated # 105W (top right corner), Nat'l Geo Trails Illustrated #104E (bottom center), Pike National Forest map and Observatory Rock, Mt. Logan and Shawnee USGS topographic maps.

IMPORTANT: Stay found with the aid of a topographic map, compass, GPS receiver and the skill to use them.

Safety Considerations and Supplemental Info: ■ Afternoon thunderstorms and lightning ■ Prepare for mosquitoes from May through September

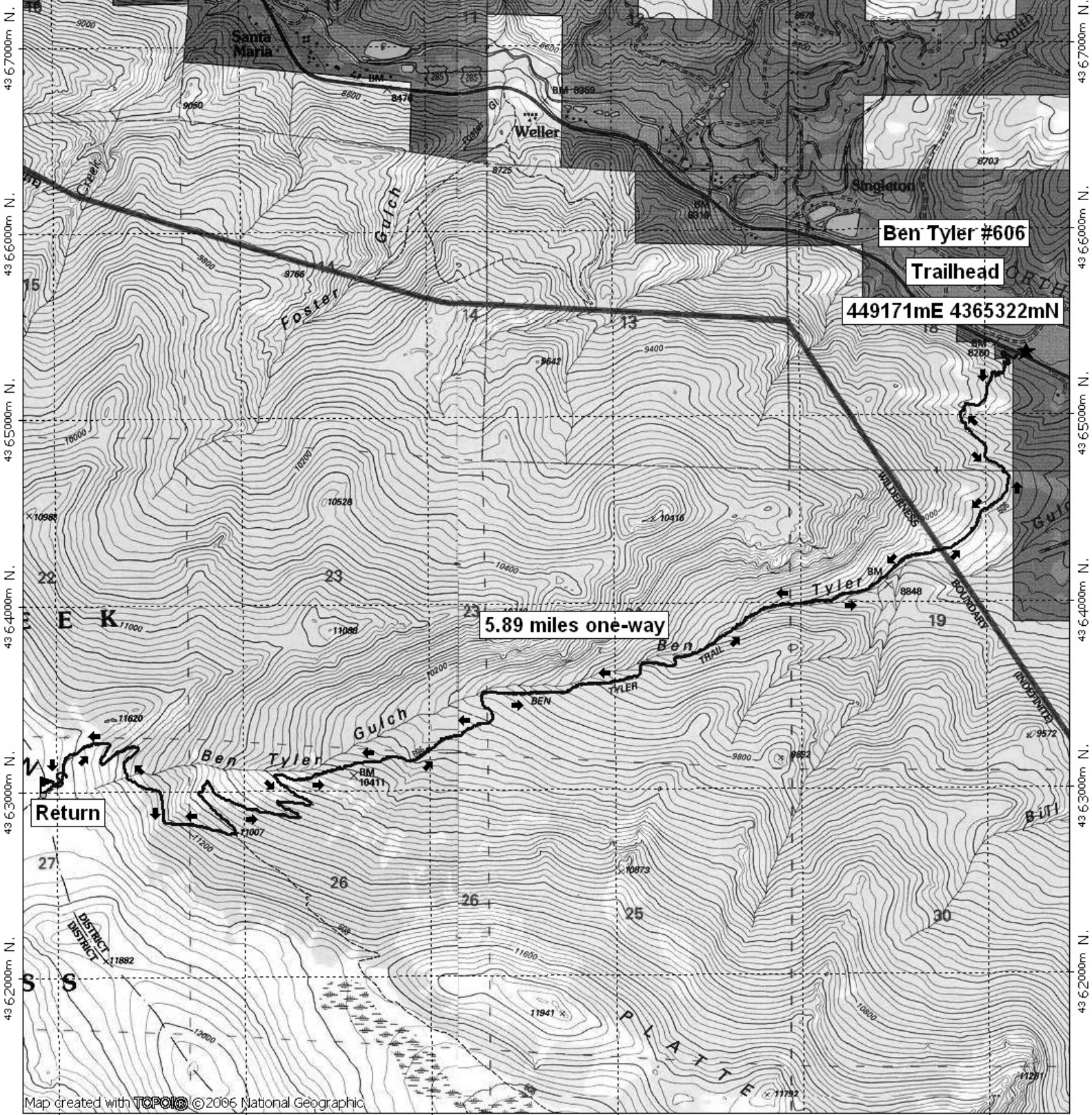
Trail Description: Follow the Ben Tyler Trail #606 from the parking area into the stream valley of the Ben Tyler Gulch. This trail passes through forested terrain to, and above timberline and then to the crest of the Kenosha Mountain Range. Return the way you came. **TIP:** Contact the South Platte Ranger District for trail updates.

Highlights: ■ Great aspen viewing in the fall ■ Features stream side walking as well as terrain above timberline with wonderful views of distant mountain ranges
 ■ Abundant wildflowers in the Spring and Summer ■ Outstanding views to the North and South from the highest point ■ Remains of an old lumber camp

© 2007 ORIC All rights reserved.

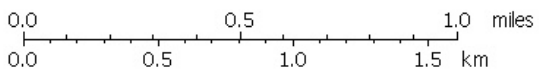
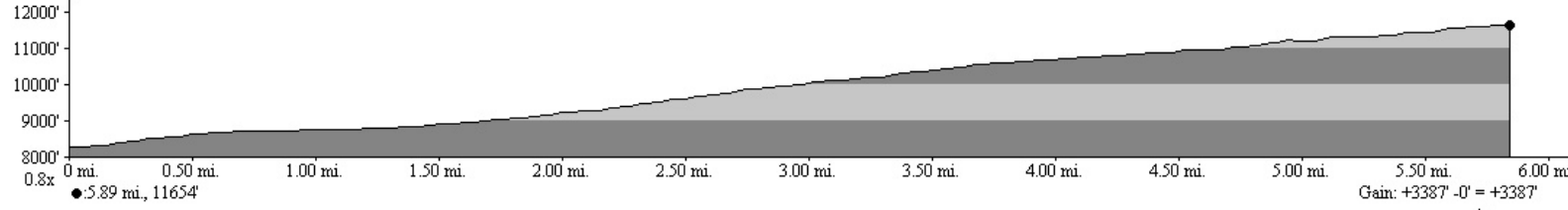
Ben Tyler Trail

444000m E, 445000m E, 446000m E, 447000m E, 448000m E, WGS84 Zone 13S 449000m E.



Map created with **TOPOLIC** ©2006 National Geographic

444000m E, 445000m E, 446000m E, 447000m E, WGS84 Zone 13S 449000m E.



TN MN
9 1/2°
04/17/08