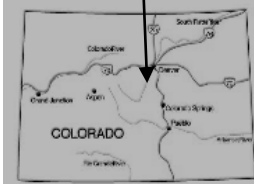


CARPENTER PEAK TRAIL



DAY HIKE

FYI: The map on the reverse side is for general orientation, not for navigation.

P.S. Get and give trail updates at www.facebook.com/oriccolorado

Location: Roxborough State Park
4751 Roxborough Drive
Littleton CO 80125

Contact Info: Roxborough State Park
303-973-3959
www.parks.state.co.us

Length: 3.1 miles one-way (estimate using the Nat'l Geo Mapping Software)

Time: You hike an average of two miles an hour. Adjust your time +/- based on terrain and weather conditions and your skill and fitness level and whether you are hiking or trail running. GPS drive time is approximately 40 minutes from the REI Flagship Store-Denver.

Elevation Gain/Loss: See trail profile on reverse side

Difficulty: Moderate to strenuous

Trail Users: Hikers and wildlife

Season: February through November

Dogs: No

Permits: State Parks Pass or Daily Entry Fee

Getting There From Denver: Take I-25 to C470. Go west on C470 to Sante Fe Drive (US Highway 85). Go south on Sante Fe Drive to Titan Road. Go west on Titan Road and follow the signs to Roxborough State Park.

Maps: Roxborough State Park Map and or the National Geographic Trails Illustrated Map # 135E. **IMPORTANT:** Stay found with the aid of a topographic map, a compass, a GPS receiver and the skill to use them.

Safety Considerations and Supplemental Info: ■ Thunderstorms and lightning ■ Very hot and dry during the summer months ■ Consider hiking to this popular peak early in the morning or on weekdays ■ Get current fire restrictions at www.oriconline.org ■ Be prepared for mosquitoes from June through September

Trail Description: The Carpenter Peak Trail is a well signed trail that passes through scrub oak and pines on its way to Carpenter Peak. It starts its life as the Willow Creek Trail and then joins the South Rim Trail before heading west and then north to Carpenter Peak. You have the option to take a connector to the Colorado Trail just before you reach the summit if you'd like to prolong your hike. **TIP:** Contact Roxborough State Park for trail updates.

Highlights: ■ Great views of the incredible "flatiron" shaped red rock formations ■ Views of the high peaks to the north and west ■ Hike to the highest point at Roxborough State Park ■ Abundant wildlife in the thickets and meadows along the trail

© 2007 ORIC. All rights reserved.

Visit us in the REI DENVER FLAGSHIP STORE

OUTDOOR RECREATION INFORMATION CENTER ■ 1416 Platte Street ■ Denver CO 80202

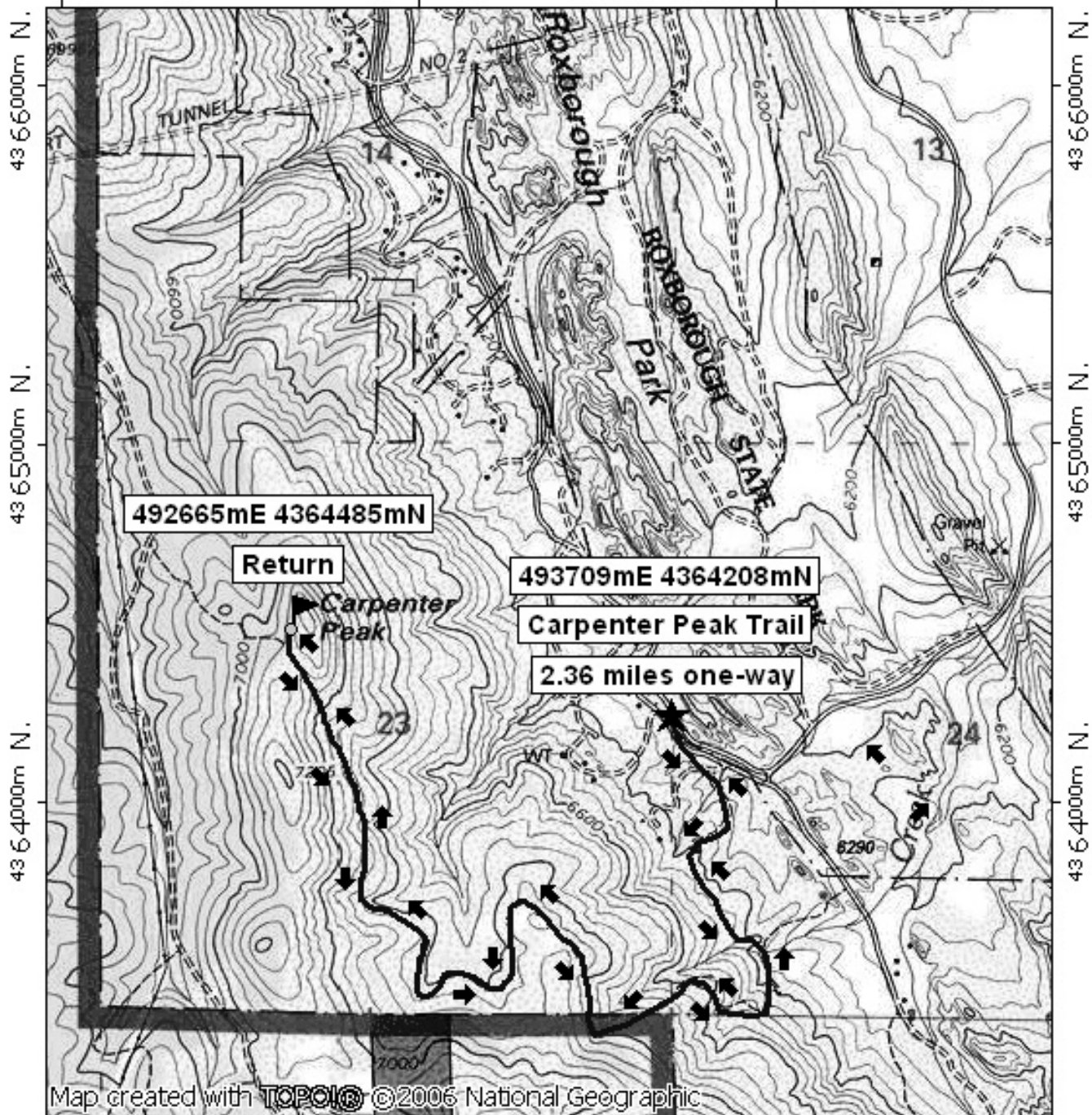
Ask us. We'll Tell You Where To Go ■ www.oriconline.org ■ Updated: 2-4-2018

Follow us on: ■ facebook.com/oriccolorado ■ Twitter: @oricbryan

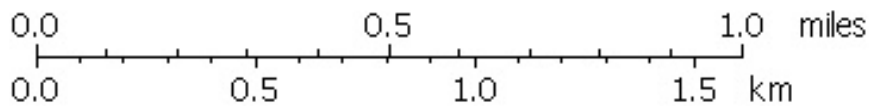
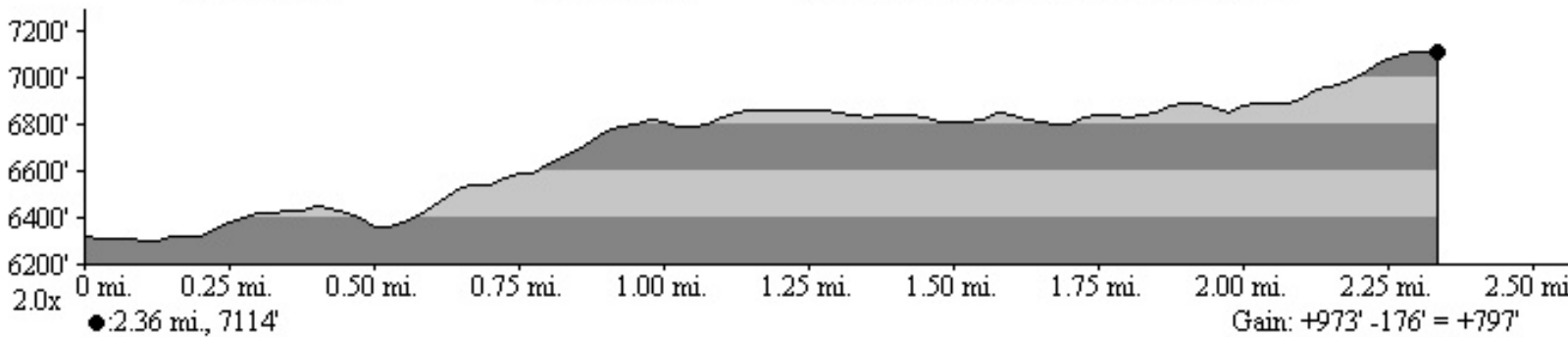


Carpenter Peak Day Hike

492000m E, 493000m E, WGS84 Zone 13S 494000m E.



492000m E, 493000m E, WGS84 Zone 13S 494000m E.



TN MN
9 1/2°
04/19/08