

HELL'S HOLE

WINTER TRAIL



FYI: The map on the reverse side is for general orientation, not for navigation.
P.S. Give and get snow and trail updates at www.facebook.com/oriccolorado

Location: Mt. Evans Wilderness
Arapaho National Forest
Southwest of Idaho Springs

Contact Info: Clear Creek Ranger District
303-567-4382
www.fs.fed.us/r2

15

Length: 2.59 miles one-way (est. mileage rounded to the nearest ¼ mile)

Time: The average person snowshoes apx. 1 mile an hour. Adjust your time +/- based on terrain, snow conditions, wind speed, your skill and fitness levels and whether you are snowshoeing, skiing or hiking.

Elevation Gain/Loss: See trail profile on reverse side

Difficulty: Moderate to challenging

Activities: Snowshoeing, skiing and hiking (when there's not enough snow)

Season: December through March (Check www.oriconline.org for snow depths and avalanche conditions)

Permits: Free use permit at trailhead

From Denver: Take I-70 west to Exit 240 (Idaho Springs and Mt Evans) and drive south on CO Highway 103. At the first switchback, about 6 ½ miles down the road turn right onto unpaved West Chicago Creek Road (CO 114) and continue for about 2 ½ miles to it's end at the West Chicago Creek Campground. You may not be able to drive all of the way to the campground if the road is unplowed.

Maps: National Geographic Trails Illustrated Map #104E. **IMPORTANT:** Stay found with the aid of a topographic map, a compass, a GPS receiver and the skill to use them.

Safety Concerns and Supplemental Info: ■ **THIS IS IMPORTANT!** Do not go beyond the 11,100 ft level (at a small meadow). The terrain further on, near Hell's Hole, is extremely steep and **AVALANCHE PRONE** ■ Restrooms at trailhead are open year round ■ Dress appropriately for winter conditions ■ Plan for shorter days in this season

Trail Description: The Hell's Hole Trail #53 starts at the south end of the campground at 9600 feet. The first part is steady uphill, roughly parallelling West Chicago Creek. About one mile from the trail head, you enter the Mount Evans Wilderness Area. Near timberline, the trail levels off somewhat.

TIP: Contact the Clear Creek Ranger District for trail updates and snow conditions.

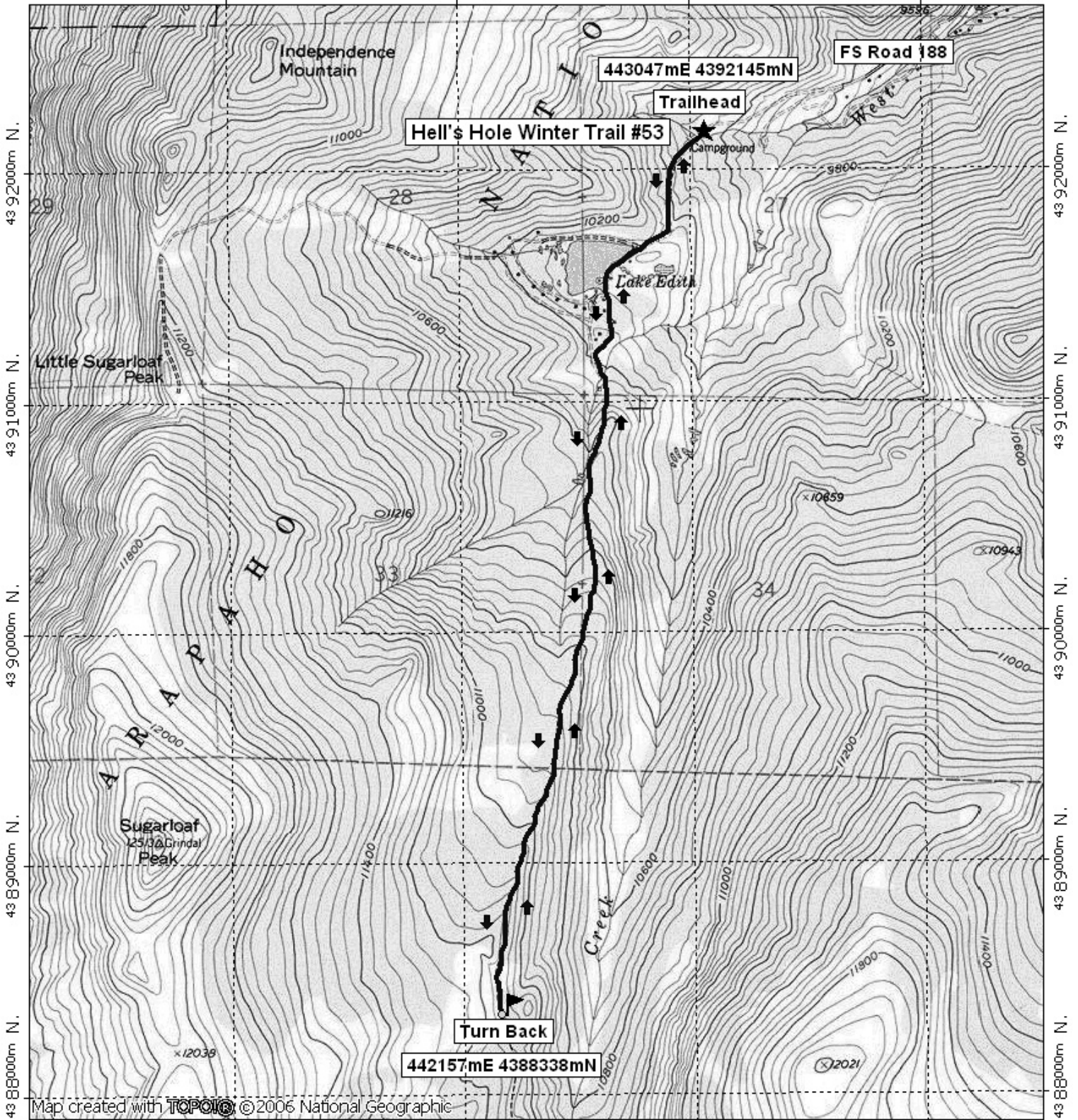
Highlights: ■ Views of Sugarloaf, Grey Wolf and Mt. Bierstadt ■ Aspen Forest

Visit us in the REI DENVER FLAGSHIP STORE
OUTDOOR RECREATION INFORMATION CENTER ■ 1416 Platte Street ■ Denver CO 80202
Ask us. We'll Tell You Where To Go ■ www.oriconline.org ■ Updated: 2-3-2018
Follow us on: ■ facebook.com/oriccolorado ■ Twitter: @oricbryan

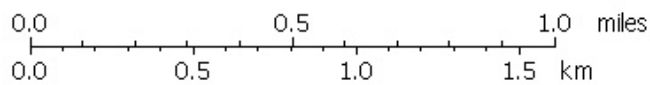
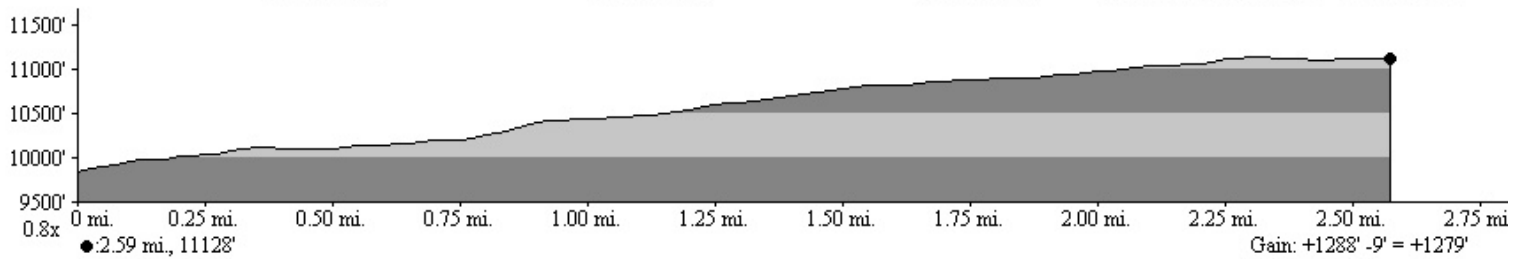


Hell's Hole Winter Trail Final

441 000m E, 442 000m E, 443 000m E, WGS84 Zone 13S 444 000m E.



Map created with **TOPOLIG** © 2006 National Geographic



TN MN

9 1/2°

11/02/07