

HERMAN GULCH



WINTER TRAIL

FYI: The map on the reverse side is for general orientation, not for navigation.
P.S. Give and get snow and trail updates at www.facebook.com/oriccolorado

Location: Arapaho National Forest
 East of Eisenhower Tunnel
 Exit 218 to Herman Gulch TH

Contact Info: Clear Creek Ranger District
 303-567-4382
www.fs.fed.us/r2

Length: 2.23 miles one-way (est. mileage rounded to the nearest ¼ mile)

Time: The average person snowshoes apx.1 mile an hour. Adjust your time +/- based on terrain, snow conditions, wind speed, your skill and fitness levels and whether you are snowshoeing, skiing or hiking.

Elevation Gain/Loss: See trail profile on reverse side

Difficulty: Moderate to difficult

Activities: Snowshoeing, skiing and hiking (when there's not enough snow)

Season: December through March (Check www.oriconline.org for snow depths and avalanche conditions)

Dogs permitted: Under owner's control

Permits: None

From Denver: Take I-70 west to Exit 218. Get off at this exit and then turn right onto Forest Service Road 98. This road will lead to the parking area, trailhead and restrooms.

Maps: NG Trails Illustrated Map #104W **IMPORTANT:** Stay found with the aid of a topographic map, a compass, a GPS receiver and the skill to use them.

Safety Concerns and Supplemental Info: ■ This is a very popular, heavily used trail ■ Plan for shorter days in this season ■ As you progress up this valley be very careful when crossing **2 AVALANCHE PATHS** on your right

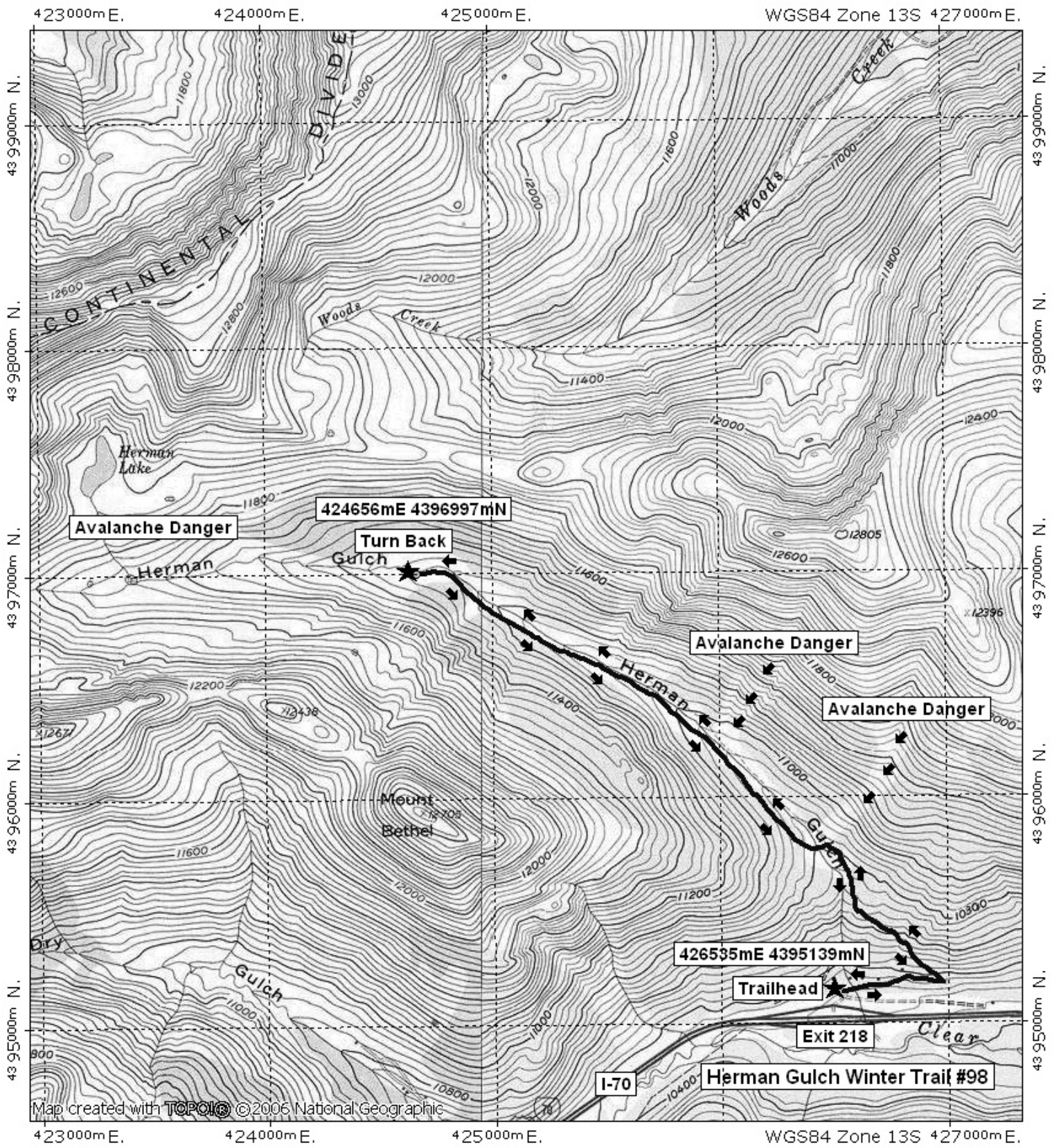
Trail Description: Herman Gulch Trail # 98 splits after about 75 yards. Take the left fork and follow the Winter Trail. The trail climbs at a fairly continuous, **STEEP PITCH** for .4 mile. This is the toughest part of the trip, but do not be discouraged. After the slope eases, you emerge in a wooded, high valley. As you progress up this valley exercise caution when crossing **2 AVALANCHE PATHS** on your right. As the trail progresses, it bends to the left and the upper reaches of this valley come into view. This is the end of this trip. Do not venture above timberline to the basin at the head of this valley. It is very avalanche prone. Return the way you came. If you are on skis be cautious, when descending the lower, steep .4 mile pitch toward the bottom. Stay in control. **TIP:** Contact the Clear Creek Ranger District for trail updates and snow conditions.

Highlights: ■ Great views of the upper valley and high peaks ■ Creek adjacent to the trail ■ Beautiful snow covered forest and meadows

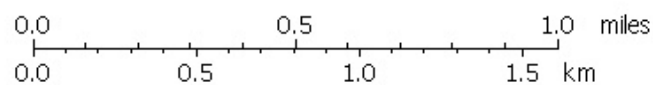
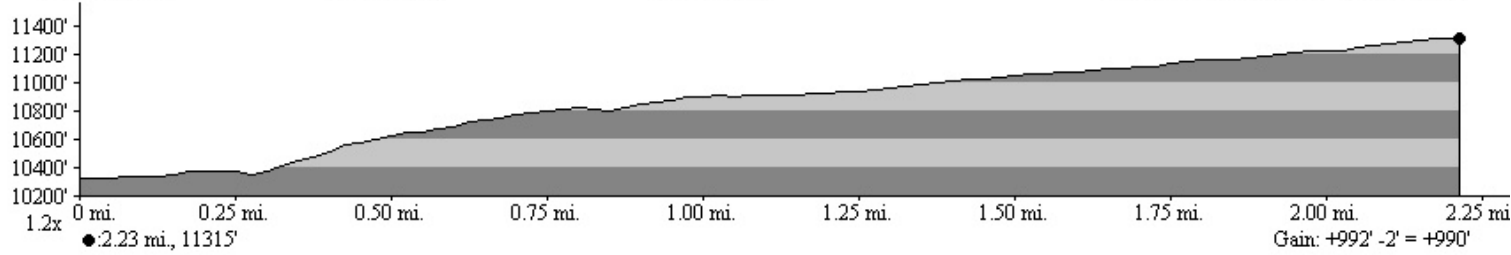
Visit us in the REI DENVER FLAGSHIP STORE
OUTDOOR RECREATION INFORMATION CENTER ■ 1416 Platte Street ■ Denver CO 80202
 Ask us. We'll Tell You Where To Go ■ www.oriconline.org ■ Updated: 2-3-2018
 Follow us on: ■ facebook.com/oriccolorado ■ Twitter: @oricbryan



Herman Gulch Winter Trail Final



Map created with **TOPOLIC** ©2006 National Geographic



TN ↑ MN
10°
11/02/07