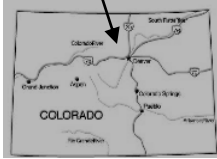


# ROGER'S LAKES AND HEART LAKE



## WINTER TRAIL

**FYI:** The map on the reverse side is for general orientation, not for navigation.  
**P.S.** Give and get snow and trail updates at [www.facebook.com/oriccolorado](http://www.facebook.com/oriccolorado)

**Location:** James Peak Wilderness  
 Arapaho National Forest  
 Near East Portal

**Contact Info:** Boulder Ranger District  
 303-541-2500  
[www.fs.fed.us/r2](http://www.fs.fed.us/r2)

**Length:** 3.91 miles one-way (est. mileage rounded to nearest ¼ mile)

**Time:** The average person snowshoes apx.1 mile an hour, not including breaks. Adjust your time +/- based on terrain, snow conditions, wind speed, your skill and fitness levels and whether you are snowshoeing, skiing or hiking.

**Elevation Gain/Loss:** See trail profile on reverse side

**Difficulty:** Strenuous

**Activities:** Snowshoeing and skiing (recommend skins or a full telemark set-up to go the whole way)

**Season:** December through March (Check [www.oriconline.org](http://www.oriconline.org) for snow depths and avalanche conditions)

**Pets:** Dogs are permitted under owner's control

**Permits:** Free use permits at the trailhead

**From Denver:** Take I -70 west to CO Highway 119 (Exit 244). Go north on CO Highway 119 to Rollinsville. Go west on Boulder County Road 16 (a.k.a. Rollins Pass Road) to the East Portal of the Moffat Tunnel. **Alternate Route:** Drive south on CO Highway 119 about 4 miles from Nederland. Go west out of Rollinsville on Boulder County Road 16. Drive 7 miles to the end of County Road 16.

**Maps:** National Geographic Trails Illustrated Map #103E and or East Portal and Empire USGS 7.5 topographic maps. **IMPORTANT:** Stay found with the aid of a topographic map, a compass, a GPS receiver and the skill to use them.

**Safety Concerns and Supplemental Info:** ■ Start can be windy out of the parking lot and at the lakes ■ **CAUTION!** Do not travel beyond the east side of either of these lakes. The west sides are steep and avalanche prone ■ Dress appropriately for winter conditions ■ Plan for shorter days in this season

**Trail Description:** South Boulder Creek Trail #900 starts at the East Portal of the Moffat Tunnel. The trail takes you up a valley along the South Boulder Creek under a canopy of trees. Stretches of the trail are steep and can be icy. The trail becomes less distinct as it approaches the Rogers Pass Lakes. Continue past the Rogers Lakes to Heart Lake. **TIP:** Contact the Boulder Ranger District for trail updates and snow conditions.

**Highlights:** ■ Great views of and from the Continental Divide ■ Dense forest along the trail ■ Alpine tundra around the snow covered lakes

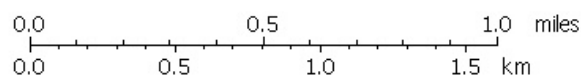
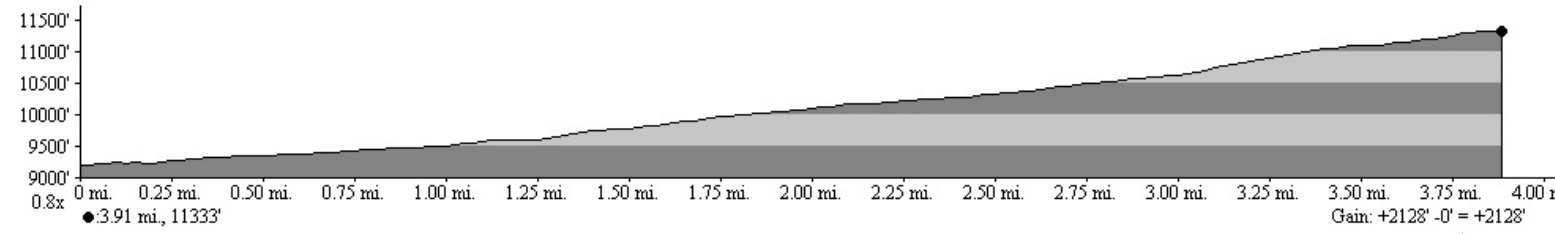
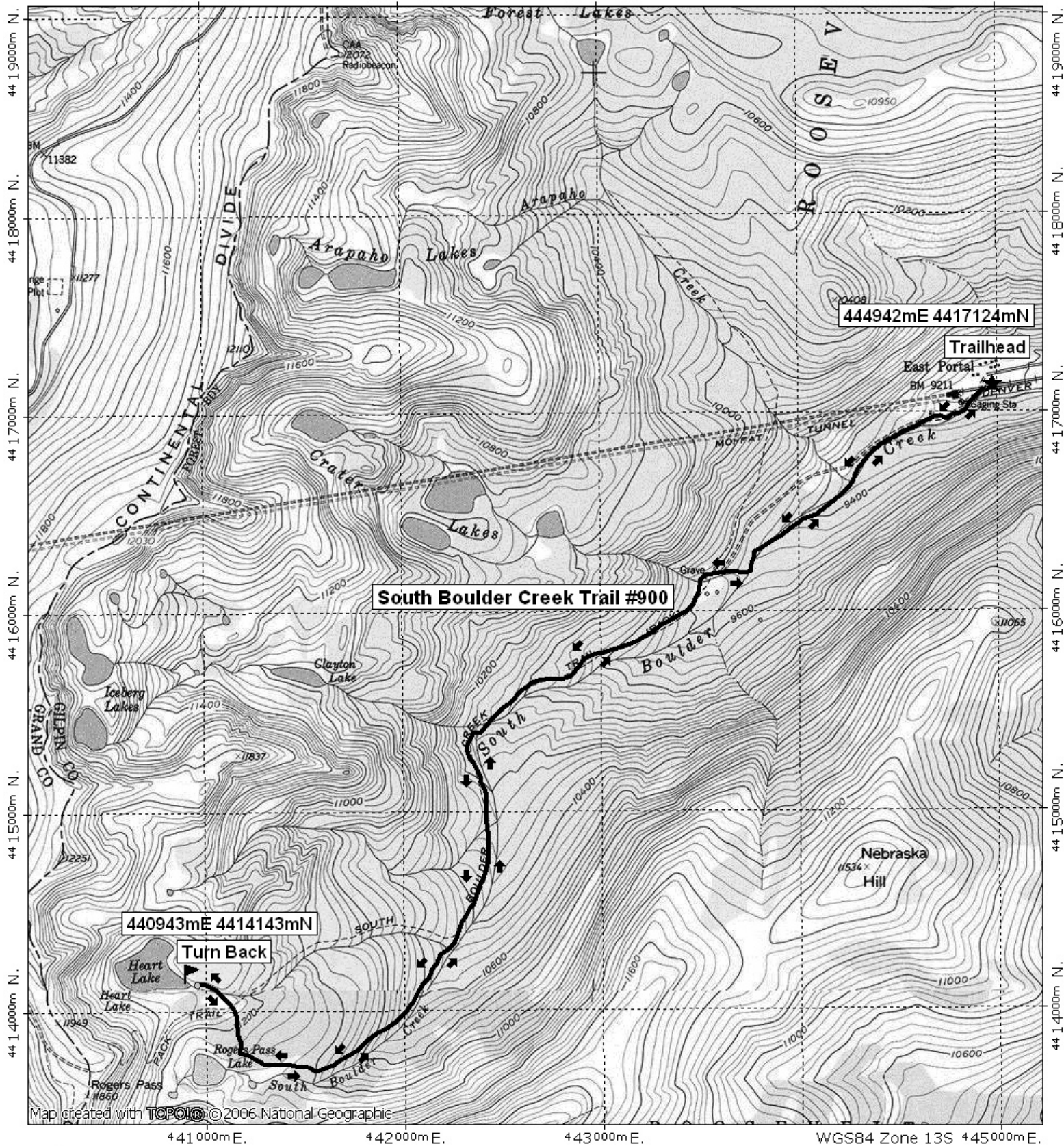
© 2007 ORIC All rights reserved.

Visit us in the REI DENVER FLAGSHIP STORE  
**OUTDOOR RECREATION INFORMATION CENTER** ■ 1416 Platte Street ■ Denver CO 80202  
 Ask us. We'll Tell You Where To Go ■ [www.oriconline.org](http://www.oriconline.org) ■ Updated: 2-3-2018  
 Follow us on: ■ [facebook.com/oriccolorado](http://facebook.com/oriccolorado) ■ Twitter: @oricbryan



# Roger's Lakes and Heart Lake Winter Trail Final

441000m E, 442000m E, 443000m E, WGS84 Zone 13S 445000m E.



TN MN  
9 1/2°  
11/02/07