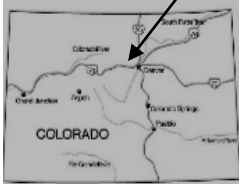


# SAINT MARY'S GLACIER & LAKE



## WINTER TRAIL

**FYI:** The map on the reverse side is for general orientation, not for navigation.  
**P.S.** Give and get snow and trail updates at [www.facebook.com/oriccolorado](http://www.facebook.com/oriccolorado)

**Location:** Arapaho National Forest  
 Off Fall River Road  
 Near the town of Alice

**Contact Info:** Clear Creek Ranger District  
 303-567-4382  
[www.fs.fed.us/r2](http://www.fs.fed.us/r2)

**Length:** .65 miles one-way (est. mileage rounded to the nearest ¼ mile)

**Time:** The average person snowshoes apx.1 mile an hour. Adjust your time +/- based on terrain, snow conditions, wind speed, your skill and fitness levels and whether you are snowshoeing, skiing or hiking.

**Elevation Gain/Loss:** See trail profile on reverse side

**Difficulty:** Easy to Moderate

**Activities:** Snowshoeing, skiing and hiking (when there's not enough snow)

**Season:** December through March (Check [www.oriconline.org](http://www.oriconline.org) for snow depths and avalanche conditions)

**Dogs permitted:** On hand-held leash

**Permits:** None required

**From Denver:** Drive west on I-70 to Idaho Springs. Drive 2 miles past Idaho Springs and then take exit #238 to the Fall River Road (Clear Creek County Road 275). Take the Fall River Road apx. 9 miles passing the town of Alice. The St. Mary's Glacier trailhead will be on your left. Continue past the trailhead sign apx .1 mile to the parking area on the left side of the road. **FYI:** The March 12, 2008 edition of the Clear Creek Courant indicates that a private land owner is now charging \$5.00 to park.

**Maps:** National Geographic Trails Illustrated #103E and the Empire USGS 7.5 topographic map. **IMPORTANT:** Stay found with the aid of a topographic map, a compass, a GPS receiver and the skill to use them.

**Safety Concerns and Supplemental Info:** ■ Glacier travel, without specialized equipment and training, may result in death or serious injury ■ Dress appropriately for winter conditions ■ Plan for shorter days in this season

**Trail Description:** This trail is somewhat steep, but is less than a mile long.

**HINT:** Contact the Clear Creek Ranger District for trail updates and snow conditions.

**Highlights:** ■ The trip through lodgepole pines gives way St. Mary's Glacier (really a snow field) ■ Alpine views ■ Frozen St. Mary's Lake

Visit us in the REI DENVER FLAGSHIP STORE  
**OUTDOOR RECREATION INFORMATION CENTER** ■ 1416 Platte Street ■ Denver CO 80202  
 Ask us. We'll Tell You Where To Go ■ [www.oriconline.org](http://www.oriconline.org) ■ Updated: 2-3-2018  
 Follow us on: ■ [facebook.com/oriccolorado](http://facebook.com/oriccolorado) ■ Twitter: @oricbryan



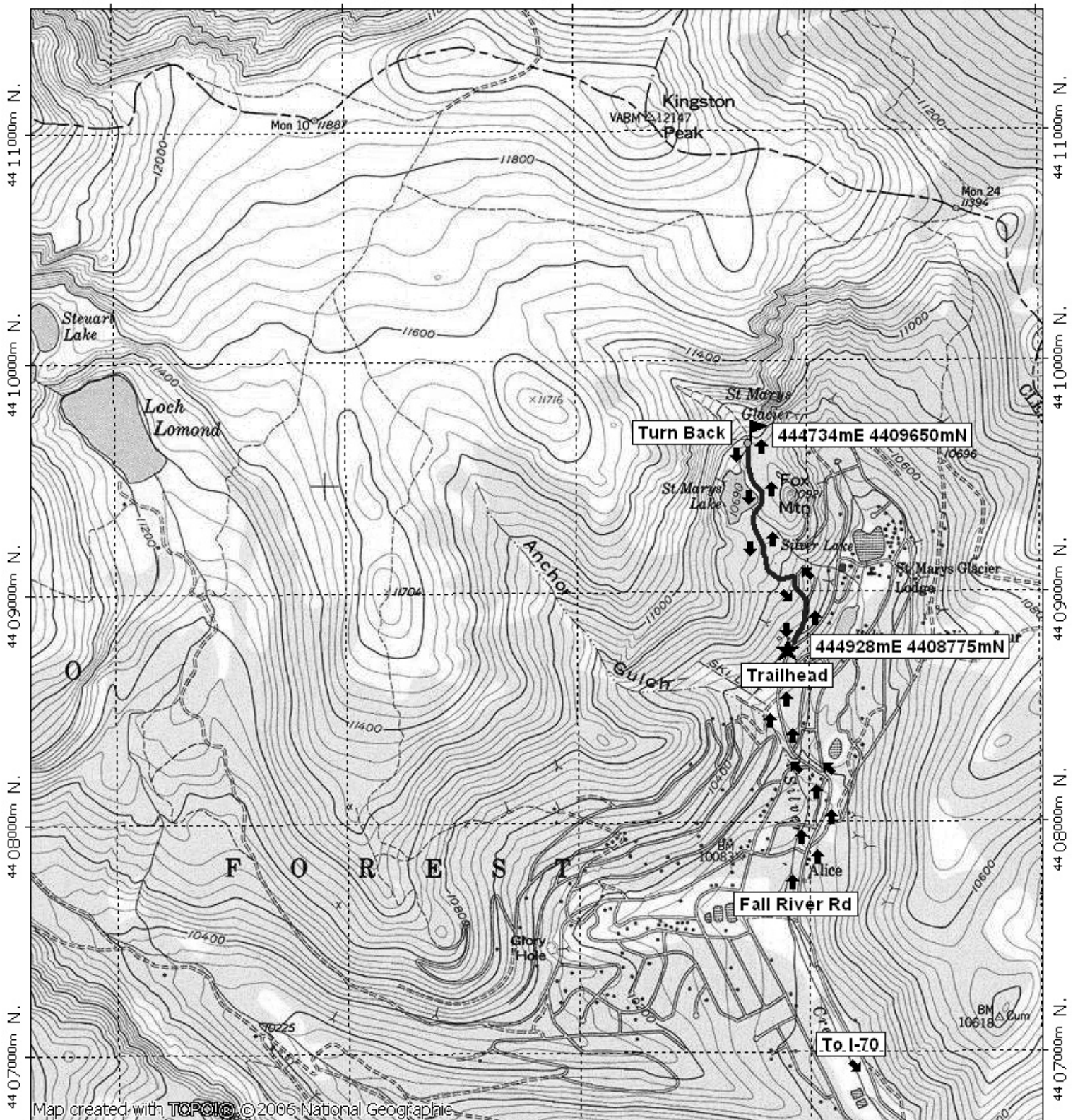
# Saint Mary's Glacier Trail Final

442000m E.

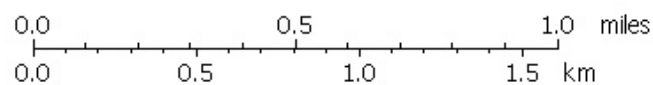
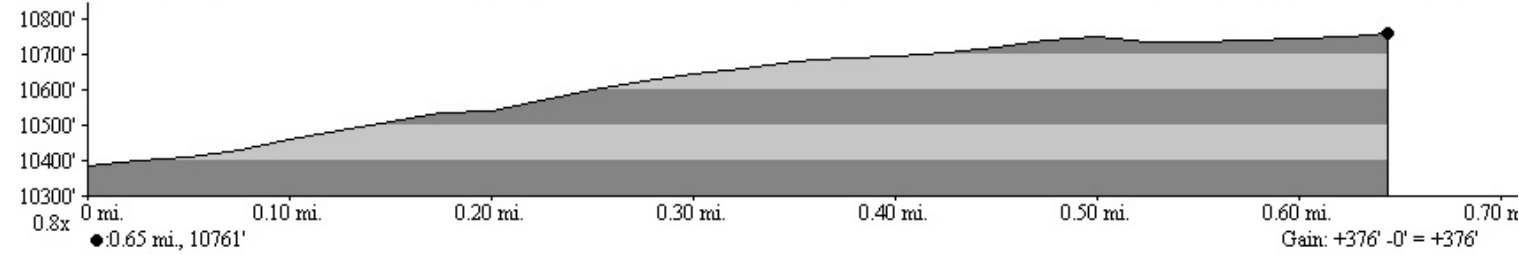
443000m E.

444000m E.

WGS84 Zone 13S 446000m E.



442000m E. 443000m E. 444000m E. WGS84 Zone 13S 446000m E.



TN ↑ MN  
9 1/2°  
11/02/07

Map created with **TOPOLIC** © 2006 National Geographic