

# SOUTH CHICAGO CREEK



## WINTER TRAIL

**FYI:** The map on the reverse side is for general orientation, not for navigation.  
**P.S.** Give and get snow and trail updates at [www.facebook.com/oriccolorado](http://www.facebook.com/oriccolorado)

**Location:** Arapaho National Forest  
Mt. Evans Wilderness  
W. of Echo Lake

**Contact Info:** Clear Creek Ranger District  
303-567-4382  
[www.fs.fed.us/r2](http://www.fs.fed.us/r2)

**Length:** 1.56 miles one-way (est. mileage rounded to the nearest ¼ mile)

**Time:** The average person snowshoes apx.1 mile an hour, not including breaks. Adjust your time +/- based on terrain, snow conditions, wind speed, your skill and fitness level and whether you are snowshoeing, skiing or hiking.

**Elevation Gain/Loss:** See trail profile on reverse side

**Difficulty:** Moderate

**Activities:** Snowshoeing, skiing and hiking (when there's not enough snow)

**Season:** Mid November through April (Check [www.oriconline.org](http://www.oriconline.org) for snow depths and avalanche conditions)

**Dogs permitted:** Under owner's control

**Permits:** None

**From Denver:** Take I-70 to Idaho Springs. Get off at Exit 240. Go south on Colorado Highway 103. Drive 8.6 miles to the turn-off for the Hefferman Gulch Road (FR #247). Turn right and park on the right side of the road.

**Maps:** National Geographic Trails Illustrated Map #104E and or Georgetown and Idaho Springs USGS 7.5 topographic maps. **IMPORTANT:** Stay found with the aid of a topographic map, a compass, a GPS receiver and the skill to use them.

**Safety Concerns and Supplemental Info:** ■ Parking is limited ■ Dress appropriately for winter conditions ■ Plan for shorter days in this season

**Trail Description:** Start up the side road. Pass a series of cabins and reach a fork at .7 miles. Continue to the right for apx .4 miles to a second fork. Go left here for another 200 yards to a Mt Evans Wilderness Boundary sign. This is the turn around point. Option: Beyond this sign a trail continues into the wilderness and ascends steeply 1 ½ miles before ending near timberline.

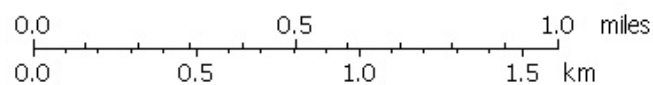
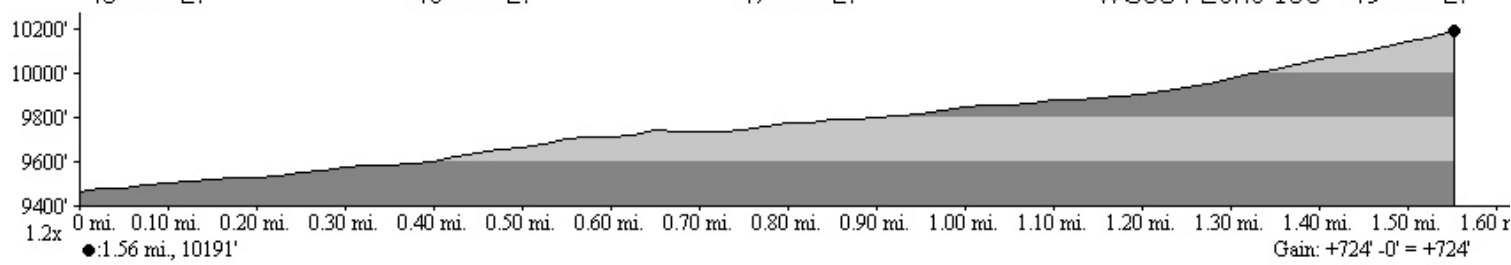
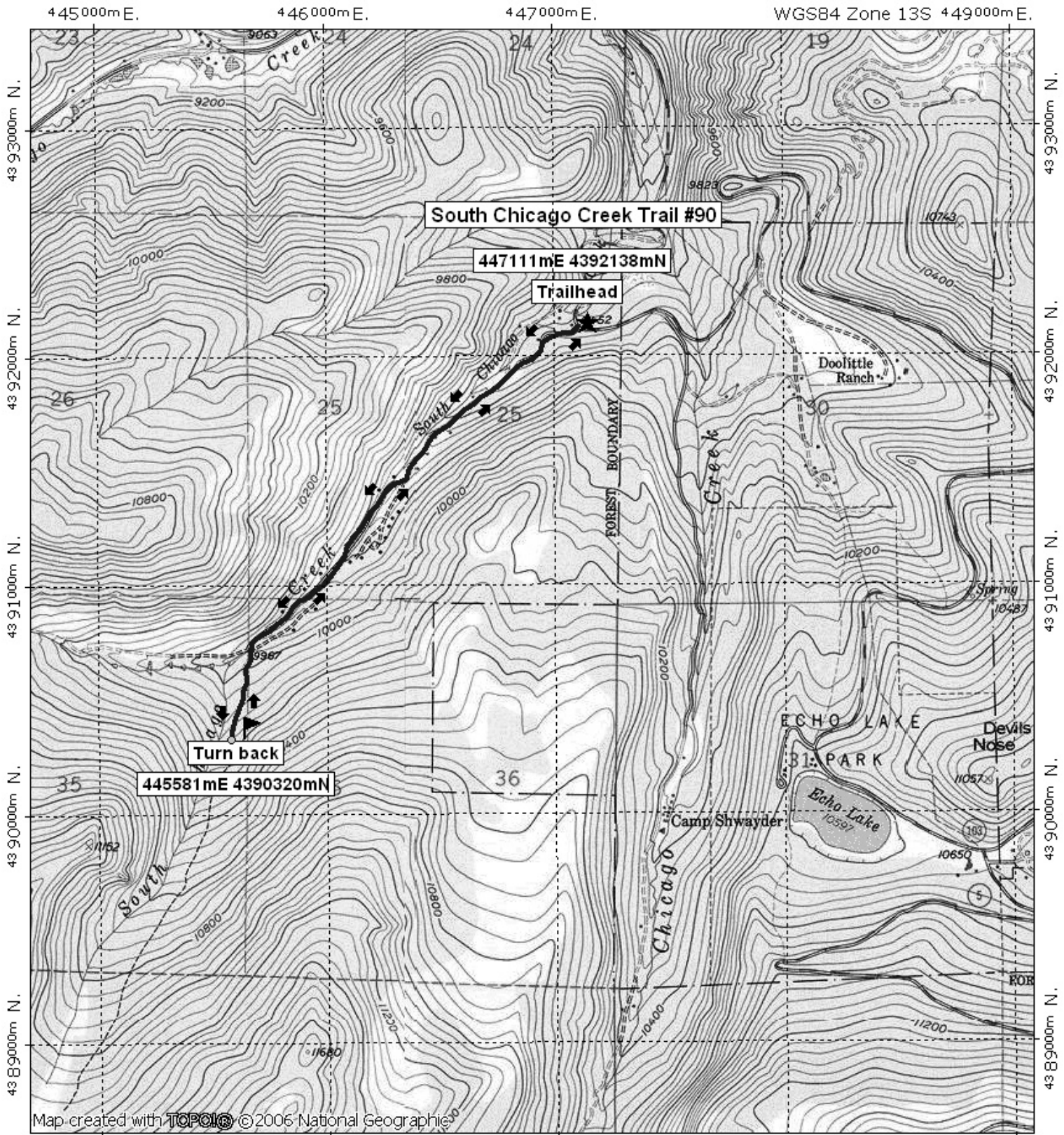
**TIP:** Contact the Clear Creek Ranger District for trail updates and snow conditions.

© 2007 ORIC. All rights reserved.

Visit us in the REI DENVER FLAGSHIP STORE  
**OUTDOOR RECREATION INFORMATION CENTER** ■ 1416 Platte Street ■ Denver CO 80202  
Ask us. We'll Tell You Where To Go ■ [www.oriconline.org](http://www.oriconline.org) ■ Updated: 3-25-2018  
Follow us on: ■ [facebook.com/oriccolorado](http://facebook.com/oriccolorado) ■ Twitter: @oricbryan



# South Chicago Creek Winter Trail Final



TN ↑ MN  
9½°  
11/02/07