

Boulder Ranger District
2140 Yarmouth Avenue
Boulder, CO 80301
(303) 541-2500
FAX: (303) 541-2515



United States Department of Agriculture



WINTER

Hessie Area Trails

Difficulty: Moderate to Extremely Difficult

Trail Use: Moderate to Heavy

Length: Eldora to Lost Lake 2.8 miles; to King Lake 6.6 miles; to Woodland Lake 5.7 miles; to Devil's Thumb Lake 6.9 miles. DISTANCES ARE ONE-WAY.

Elevation: 8,700 feet at Eldora; 9,800 feet at Lost Lake; 10,880 feet at upper King Lake valley; 11,000 feet at Woodland Lake; 11,160 feet at Devil's Thumb Lake.

Open To: Cross Country Skiing, Snowshoeing. West of the Indian Peaks Wilderness boundary, pets must be on a hand-held leash at all times and group size limitations apply.

Access

- From Nederland, head south on Colorado Highway 119 for ½ mile. Turn west onto County Road 130 (Eldora Ski Resort sign). Stay on the main road through the town of Eldora.
- Once the pavement ends, the road may be blocked by piles of snow.
- When parking, be aware of private drives and signed no-parking areas.
- The Hessie Townsite and trailhead are ½ mile to the west.

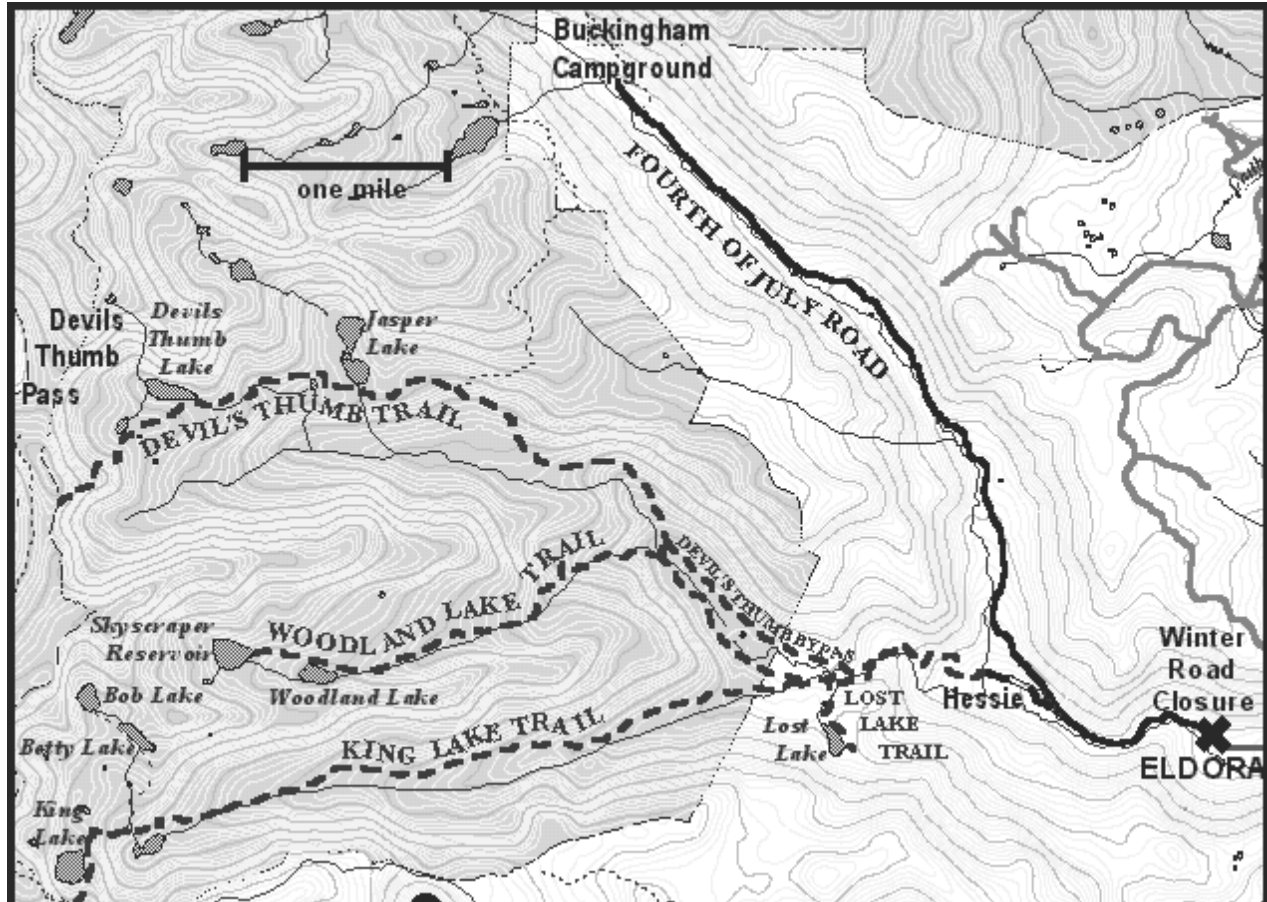
Trail Highlights

- **Lost Lake Trail #813:** At the Hessie sign, the left (south) fork leads passed the old Hessie townsite and across the creek. The road becomes steeper and is often windswept. Not far beyond the second bridge, the left (south) turn leads ½ mile to Lost Lake.
- **King Lake Trail #901:** From the Lost Lake Trail junction, continue west to the King Lake Trail. This trail soon enters the Indian Peaks Wilderness. The next three miles are up a gentle valley, with the Rollins Pass Road trestles visible near the upper end. The final pitch to King Lake is very steep, with avalanche potential, and is not recommended.
- **Woodland Lake Trail #811:** From the King Lake Trail junction, the old wagon road continues right (north) across open meadows and into the Indian Peaks Wilderness. A mile up the gentle valley, the Woodland Lake Trail turns to the left (south) and climbs steeply along the creek.
- **Devils' Thumb Trail #902:** The Devil's Thumb Trail continues up the Jasper Creek drainage. The trail climbs the north side of the valley and is difficult to find in winter.

Important Information

- WITHIN THE INDIAN PEAKS WILDERNESS, CAMPFIRES ARE NOT ALLOWED. CAMPING AT JASPER LAKE IS LIMITED TO DESIGNATED SITES ONLY. Permit requirements exist for large (8-12 persons) and organized groups year round. Groups of more than 12 are not permitted. Pets must be on a hand-held leash at all times. Packstock restrictions apply.
- Lost Lake is located outside the wilderness area.

Trail Map



This map is intended as a general guide only and not for actual land navigation.



For More Information:

Boulder Ranger District
2140 Yarmouth Avenue
Boulder, CO 80301
(303) 541-2500

USDA is an equal opportunity provider and employer.