

BEARTRACK LAKES

BACKPACKING TRIP

FYI: The map on the reverse side is for general orientation, not for navigation. **P.S.** Get and post trail updates at

Location: Mt. Evans Wilderness
Arapaho National Forest
20 mi. west of Evergreen

Contact Info: Clear Creek Ranger District
303-567-4382
www.fs.fed.us/r2

Length: 11.11 mile loop (estimate using Nat'l Geo Mapping Software)

Time: Overnight backpack with multi-day options. The average person hikes apx. 2 miles per hour. Adjust your time +/- based on terrain, trail and weather conditions and your skill and fitness level.

Elevation Gain/Loss: See trail profile on the reverse side

Difficulty: Moderate

Trail Users: Hikers, deer, elk, bighorn sheep, squirrels and blue grouse

Season: 15th of June through Labor Day

Dogs: On hand-held leash and under control at all times

Permits: Free use permit at the trailhead

Getting There from Denver: I-70 west to Exit 252. Exit south to Evergreen. Go west on Upper Bear Crk Rd from the Evergreen Pkwy. Turn right where you see the signs for the Outdoor Education Laboratory School, Sawmill and Evans Ranch. Stay right at the next fork and follow the signs to Mt Evans and the Outdoor Lab. Turn left at the next fork (signed State Wildlife Area 1 mile). Take a right at the Mt Evans State Wildlife Parking Area. Follow this high clearance road (5 miles) to the Beaver Meadows trailhead.

Maps: National Geographic Trails Illustrated #104E and or Harris Park USGS 7.5 topographic map. **TIP:** Stay found with the aid of a topographic map, a compass, a GPS receiver and the skill to use them.

Safety Considerations and Supplemental Info: Vehicle access into the Mt. Evans State Wildlife Area is only allowed June 15 – until the day after Labor Day and the Wednesday before the start of the first Big Game Hunting Season and ending on the last day of the third season.

The Trail: Access Beaver Meadows Tr. #44 at the Camp Rock Campground (8 primitive sites and a toilet). Follow it through Beaver Meadows to the ruins of the Mt. Evans Shelter House. Continue south on this trail until it meets the Beartrack Lks Tr. #43. Turn right and follow this trail SE to Beartrack Lks (near the base of a rock cliff). To return, reverse course and follow the Beartrack Lks Tr. #43 NW to the Beartrack Lks TH at the Camp Rock Campground **TIP:** Contact the Clear Creek Ranger District for trail updates.

Highlights: ■ Ruins of the Mt. Evans Shelter House ■ Low use trail ■ Good fishing ■ Proximity to old burn areas ■ Grassy parks ■ Creeks featuring pools, runs, riffles and beaver ponds ■ Good views of Epaulet Mtn and Rosalie Pk

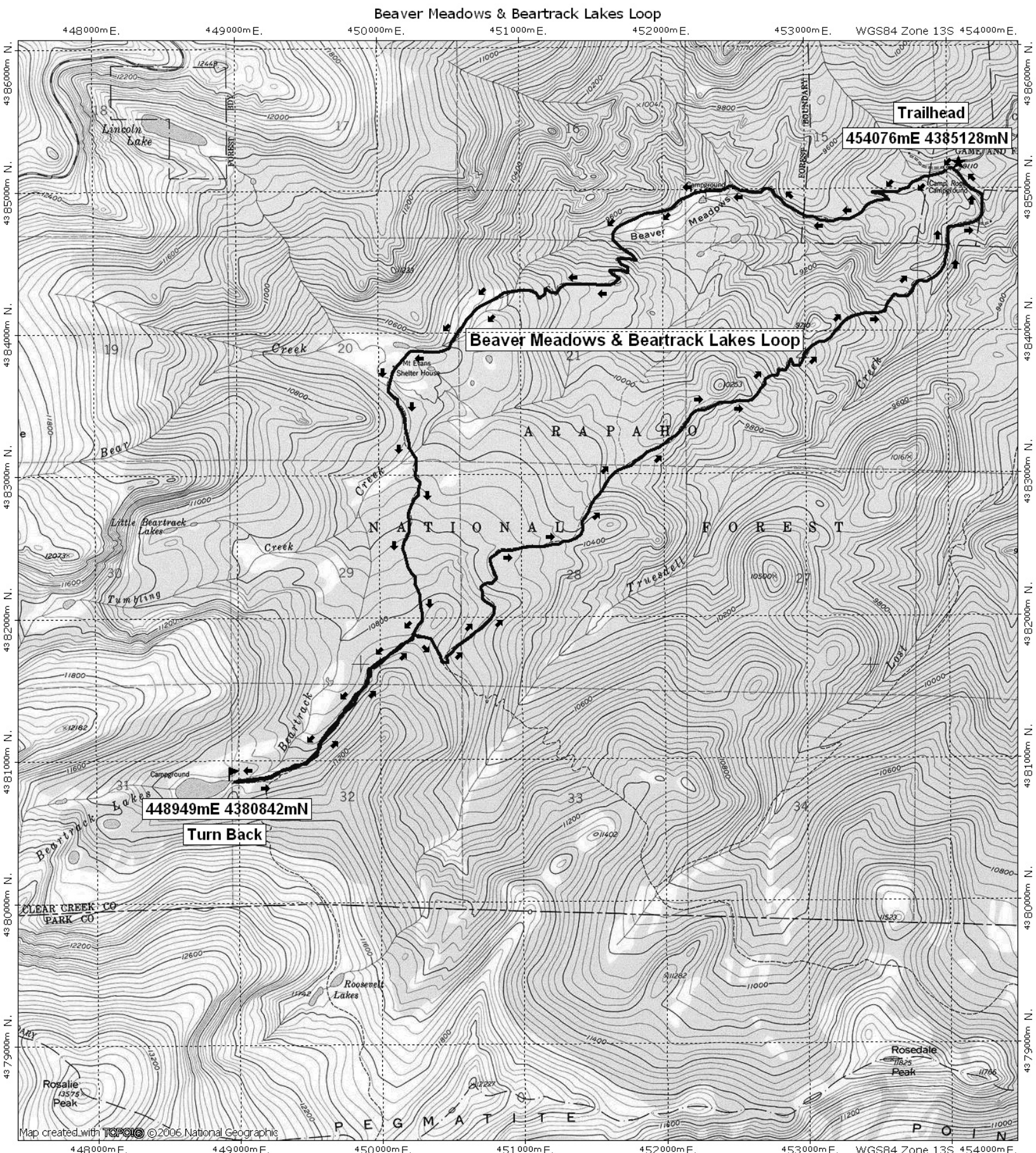
© 2007 ORIC All rights reserved.

Visit us in the REI DENVER FLAGSHIP STORE

OUTDOOR RECREATION INFORMATION CENTER ■ 1416 Platte Street ■ Denver CO 80202
Ask us. We'll Tell You Where To Go ■ www.oriconline.org ■ Updated: 11-22-2017

Follow us on: ■ [facebook.com/oriccolorado](https://www.facebook.com/oriccolorado) ■ Twitter: @oricbryan





Map created with TOPOIC ©2006 National Geographic

