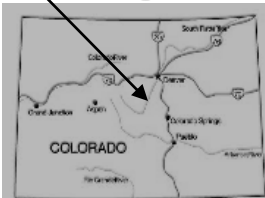


COLORADO TRAIL TO CRAIG MEADOWS



BACKPACKING TRIP

FYI: The map on the reverse side is for general orientation, not for navigation.
P.S. Get and post trail updates at www.facebook.com/oriccolorado

Location: Lost Creek Wilderness
Pike National Forest
South of Bailey

Contact Info: South Platte Ranger District
303-275-5610
www.fs.fed.us/r2

Length: 4.04 miles one-way (estimate using Nat'l Geo Mapping Software)

Time: Overnight backpack with options for a longer stay. The average person hikes apx. 2 miles an hour. Adjust your time +/- based on terrain, trail and weather conditions and your skill and fitness level.

Elevation Gain/Loss: See trail profile on the reverse side

Season: May through October

Difficulty: Easy to moderate

Trail Users: Hikers and backpackers

Dogs: On hand-held leash

Permits: None required

Getting There From Denver: Take US Highway 285 west to the town of Bailey. Turn south on Park County Road 68. Take the right fork onto Forest Road 543 (Wellington Lake Road) which will take you past the Soderstrom Ranch and to the trailhead (Colorado Trail #1776).

Maps: National Geographic Trails Illustrated Map # 105E and or the Windy Peak USGS 7.5 topographic map ■ **IMPORTANT:** Stay found with the aid of a topographic map, a compass, a GPS receiver and the skill to use them

Safety Considerations and Supplemental Info: ■ Treat water that is drawn from sources along the trail ■ Check www.oriconline.org for fire restrictions ■ Be prepared for mosquitoes from May through September

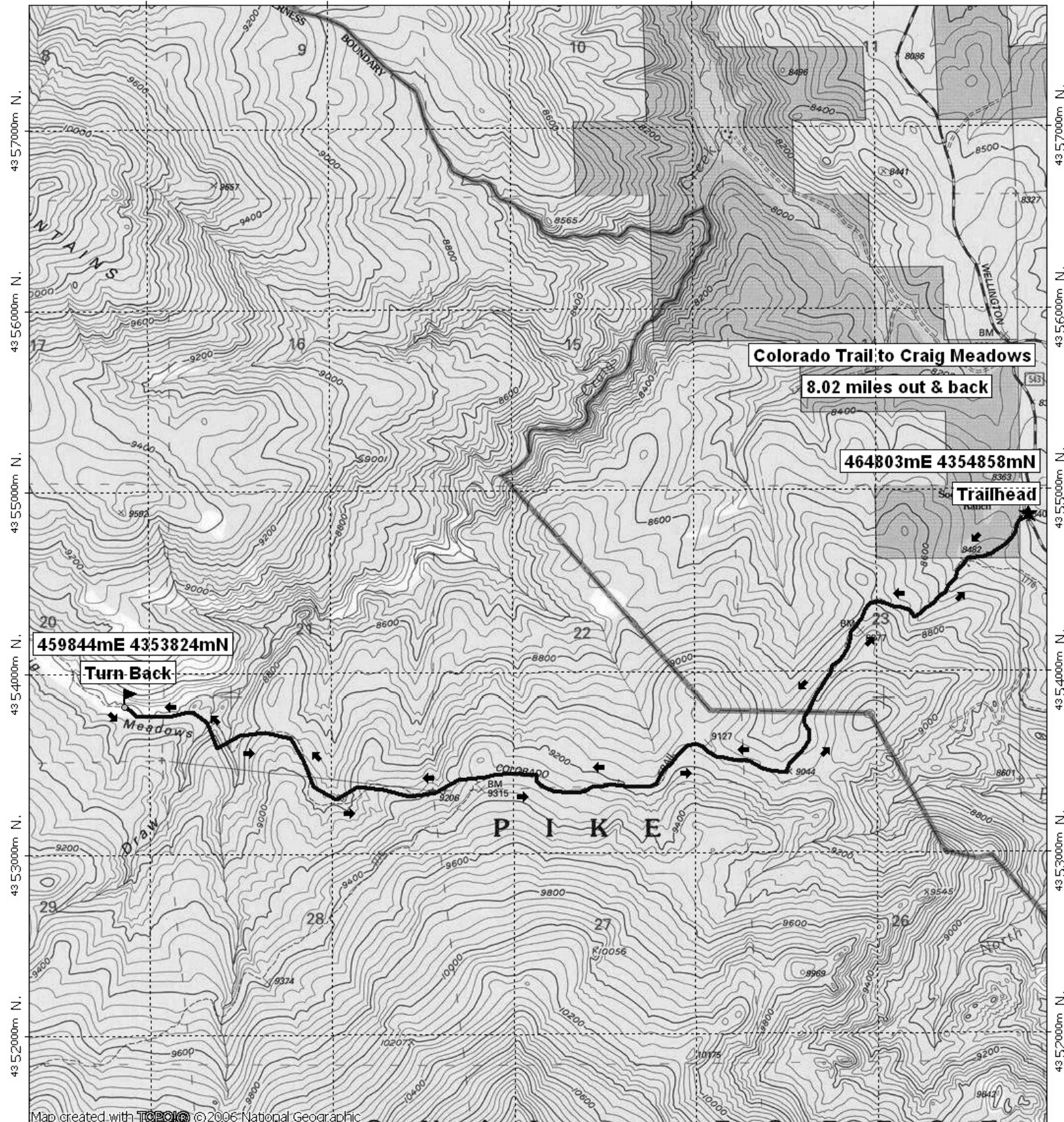
Trail Description: Hike west on Colorado Trail #1776, gradually gaining elevation from the trailhead at 8363 ft to the trip's highpoint at 9280 ft. Take the right fork to put you on Forest Trail # 637 which will take you to Craig Meadows. The trail gradually drops to Craig Creek and Craig Meadows. Camp in the meadows. **TIP:** Contact the Platte National Forest for trail conditions and updates.

Highlights: ■ Beautiful mountain meadow surrounded by rolling high country
■ Proximity to a short hike to the confluence of Payne Creek and Craig Creek
■ Great fishing



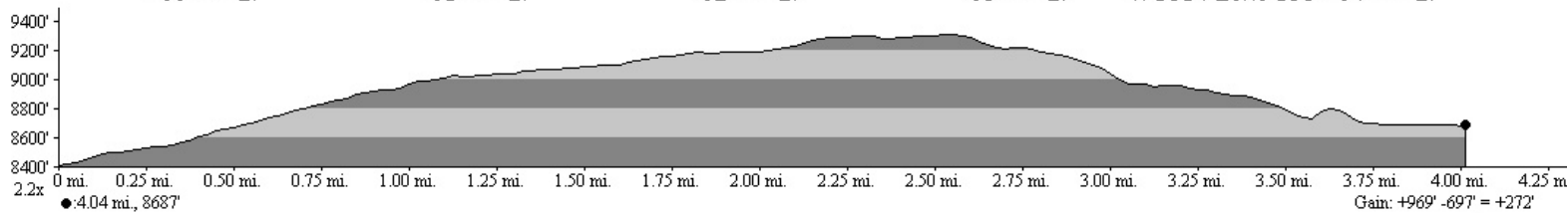
Colorado Trail to Craig Meadows

460000mE, 461000mE, 462000mE, 463000mE, WGS84 Zone 13S 464000mE.



Map created with TOPOLIC © 2006 National Geographic

460000mE, 461000mE, 462000mE, 463000mE, WGS84 Zone 13S 464000mE.



0.0 0.5 1.0 miles
0.0 0.5 1.0 1.5 km

TN MN
9 1/2°
02/14/08