

CONUNDRUM HOT SPRINGS

BACKPACKING TRIP

FYI: The map on the reverse side is for general orientation, not for navigation.
P.S. Get and post trail updates at www.facebook.com/oriccolorado

Location: Maroon Bells Wilderness
White River National Forest
Proximity to Aspen

Contact Info: Aspen Ranger District
970-925-3445
www.fs.fed.us/r2

Length: Approximately 8.5 miles one-way

Time: Overnight backpack. The average person hikes apx. 2 miles an hour. Adjust your time +/- based on terrain, trail and weather conditions and your skill and fitness level.

Elevation Gain/Loss: See trail profile on the reverse side

Difficulty: Moderate

Season: Open year-round, but the prime season is from late-Spring to mid-Fall

Trail Users: Hikers, deer, Abert squirrels, pikas, marmots and rabbits

Dogs: No dogs allowed beyond Silver Dollar Pond.

Permits: Overnight permits are required year-round. They are only available at recreation.gov (<http://bit.ly/ConundrumPermit>).

Getting There From Denver: I-70 West to Glenwood Springs. Left (South) on CO Hwy 82. Follow CO Hwy 82 to the West end of Aspen to the round-about and exit right (South) on Castle Creek Road (FR 102). Follow it for 5 miles and then turn right on Conundrum Creek Road. Drive 1.1 miles on this gravel trunk route to reach the trailhead. Trailhead can accommodate apx. 40 cars. If lot is full, return to Castle Creek Road where overflow parking is provided. Do not park on Conundrum Creek Road. This narrow road is on a County right-of-way through private property. Parking is prohibited and cars may be towed.

Maps: National Geographic Trails Illustrated #128E and 127W, Sky Terrain: Aspen & Crested Butte Trail Map; Latitude 40°: Aspen Crested Butte Gunnison Rec. Topo Map and Hayden Pk, Maroon Bells and Gothic USGS 7.5 topo maps. **IMPORTANT HINT:** Consider carrying a compass and a GPS receiver with your topo map to aid you in staying found.

Safety Considerations & Supplemental Info: ■ Camp at designated campsites (17 at last count) ■ To avoid crowds consider visiting the hot springs Monday–Thursday ■ Avalanche danger in the snow season ■ Clothing optional as is the case with most primitive hot springs ■ Food, refuse and any scented items must be stored in an Interagency Grizzly Bear Committee (IGBC) approved bear resistant container

Trail Description: Conundrum Creek Trail #1981 travels up valley to primitive hot springs & views of the adjacent peaks. **SUGGESTION:** Contact the Aspen Ranger District for trail updates and conditions.

Highlights: ■ Primitive hot springs (1 main pool and a small 4 seater) ■ Temp 98 - 102°F ■ Beautiful wildflowers July thru August ■ Cabin ruins near the hot springs ■ Vestiges of the mining era ■ Undulating meadows ■ Beaver ponds ■ Malachite mineral deposits ■ Hot Springs are surrounded by Thirteen and Fourteen thousand foot peaks ■ Silver Dollar Pond ■ 3 creek crossings, one of which you'll have to wade through

Visit us in the REI DENVER FLAGSHIP STORE

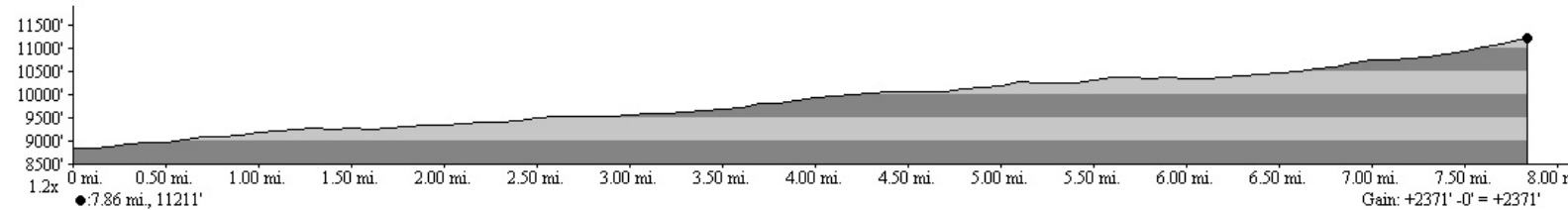
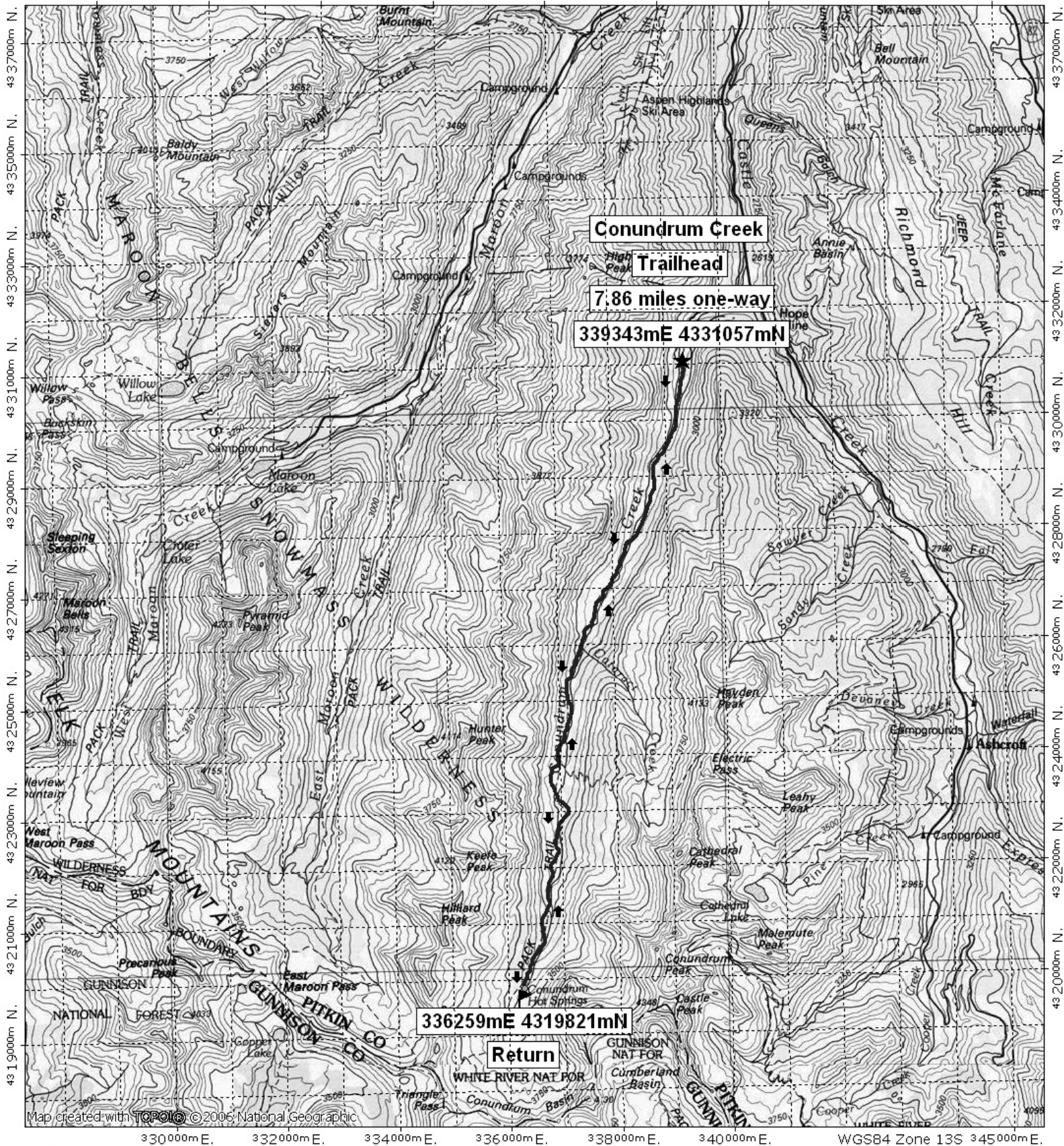
OUTDOOR RECREATION INFORMATION CENTER ■ 1416 Platte Street ■ Denver CO 80202
Ask us. We'll Tell You Where To Go ■ www.oriconline.org ■ Updated: 2-15-2018

Follow us on: ■ [facebook.com/oriccolorado](https://www.facebook.com/oriccolorado) ■ Twitter: @oricbryan



Conundrum Creek Hot Springs

329000mE, 331000mE, 333000mE, 335000mE, 337000mE, 339000mE, 341000mE, WGS84 Zone 13S 345000mE



TN MN

10°

03/06/08