



# GIBSON LAKE TRAIL

## DAY HIKE

**FYI:** The map on the reverse side is for general orientation, not for navigation. **P.S.** Get and post trail updates at [www.facebook.com/oriccolorado](http://www.facebook.com/oriccolorado)

**Location:** Pike National Forest  
In Park County  
Northwest of Webster

**Contact Info:** South Platte Ranger District  
303-275-5350  
[www.fs.fed.us/r2](http://www.fs.fed.us/r2)

**Length:** 2.29 miles one-way (estimate using the Nat'l Geo Mapping Software)

**Time:** The average person hikes apx. 2 miles an hour. Adjust your time +/- based on terrain and weather conditions and your skill and fitness level and whether you are hiking or trail running. GPS drive time is approximately 1:20 from the REI Flagship Store-Denver.

**Difficulty:** Moderate

**Trail Users:** Hikers

**Season:** Mid to late June through early October

**Elevation Gain/Loss:** +1585' -51' = +1534'

**Dogs:** On hand-held leash

**Permits:** None required

**Getting There From Denver:** Take US Highway 285 west to Webster. At Webster turn right (north/northwest) on Park County Road 60. Continue on Park County Road 60 (Forest Road 120) to Hall Valley and the Hand Cart Campgrounds. At this point, take Forest Road 120C (a rocky, high clearance, 4-wheel drive road) 1.4 miles to the Gibson Lake trailhead.

**Maps:** National Geographic Trails Illustrated #104W. **IMPORTANT:** Stay found with the aid of a topographic map, a compass, a GPS receiver and the skill to use them.

**Safety Concerns and Supplemental Info:** ■ We suggest leaving your hiking itinerary with someone who will be awaiting your return ■ Afternoon thunderstorms and lightning ■ Be prepared for mosquitoes from June through September

**Trail Description:** This is a maintained Forest Service Trail (FDT 633). **TIP:** Contact the South Platte Ranger District for trail updates and road conditions.

**Highlights:** ■ Reportedly good trout fishing ■ Seasonal wildflowers ■ Access to Whale Peak and the Continental Divide Trail.

Visit us in the REI DENVER FLAGSHIP STORE

**OUTDOOR RECREATION INFORMATION CENTER** ■ 1416 Platte Street ■ Denver CO 80202  
Ask us. We'll Tell You Where To Go ■ [www.oriconline.org](http://www.oriconline.org) ■ Updated: 6-27-2013  
Follow us on: ■ [facebook.com/oriccolorado](http://facebook.com/oriccolorado) ■ Twitter: @oricbryan



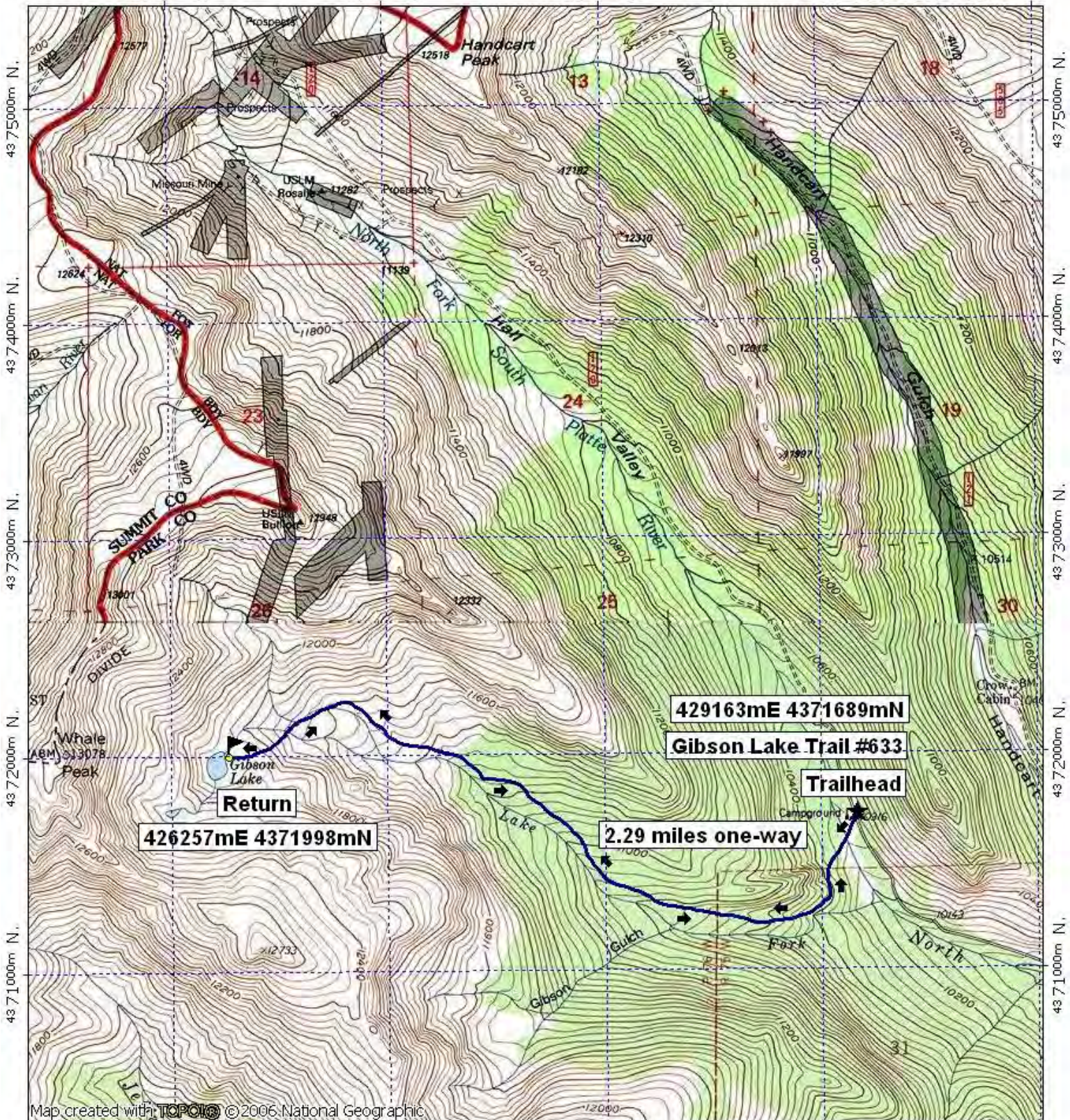
# Gibson Lake Trail

426000m E.

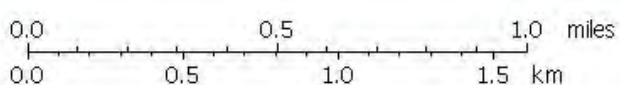
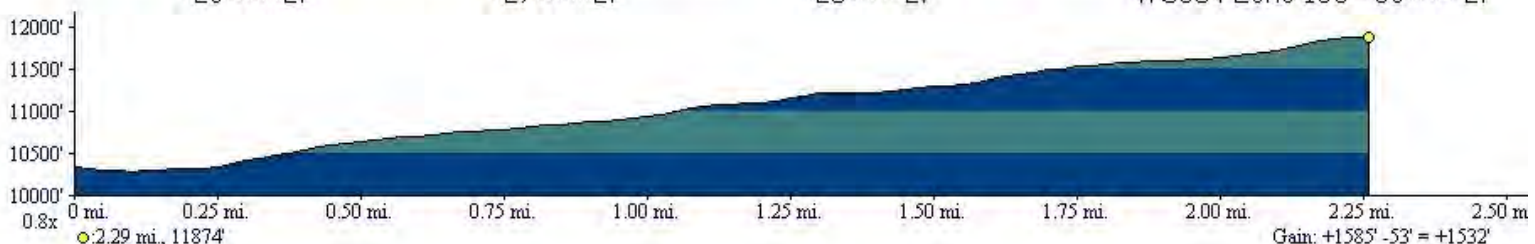
427000m E.

428000m E.

WGS84 Zone 13S 430000m E.



Map created with **TOPOIG** ©2006 National Geographic



TN MN  
9 1/2°  
06/04/08