

HANGING LAKE



FYI: The map on the reverse side is for general orientation, not for navigation.
P.S. Get and give trail updates at www.facebook.com/oriccolorado

DAY HIKE

Location: White River Nat'l Forest
E. of Glenwood Springs
Exit 125 Eastbound

Contact Info: White River Nat'l Forest
970-945-3229
www.fs.fed.us/r2

Length: 1.34 miles one-way (estimate using the Nat'l Geo Mapping Software)

Time: The average person hikes apx. 2 miles an hour. Adjust your time +/- based on terrain and weather conditions and your skill and fitness level and whether you are hiking or trail running.

Season: March to early December

Elevation Gain/Loss: +1228' -206' = +1022'

Difficulty: Moderate

Trail Users: Hikers

Dogs: No

Permits: None required

Getting There From Denver: West on I-70 into Glenwood Canyon. Exit at Grizzly Creek (Exit 121), then eastbound on I-70 to the Hanging Lake exit (Exit 125). Follow the signs to the trailhead.

Maps: National Geographic Trails Illustrated #123 (eastside of the map) and or the Shoshone USGS 7.5 topographic map. **IMPORTANT:** Stay found with the aid of a topographic map, compass, GPS receiver and the skill to use them.

Safety Concerns and Supplemental Info: ■ Close to I-70 ■ Easy access—popular can be crowded ■ Swimming and fishing is prohibited ■ There is a rest stop and restrooms at the Hanging Lake exit ■ The trail is rocky in spots ■ The trail is short, but a steep hike ■ Be prepared for mosquitoes from May through September

Trail Description: Start at the Canyon Trail and then take the left fork to the Hanging Lake Trail. **TIP:** Contact the White River National Forest Office for trail updates.

Highlights: ■ Shimmering blue-green 1 ½ acre lake fed by two waterfalls
■ Mixed forest of Oakbrush, Piñon Pine, Juniper, Douglas Firs and Cottonwoods ■ Seven bridge crossings ■ Side trail to Spouting Rock ■ Bridal Veil Falls ■ Board-walk along the southern shore ■ Box elders, ferns and limestone cliffs

Visit us in the REI DENVER FLAGSHIP STORE

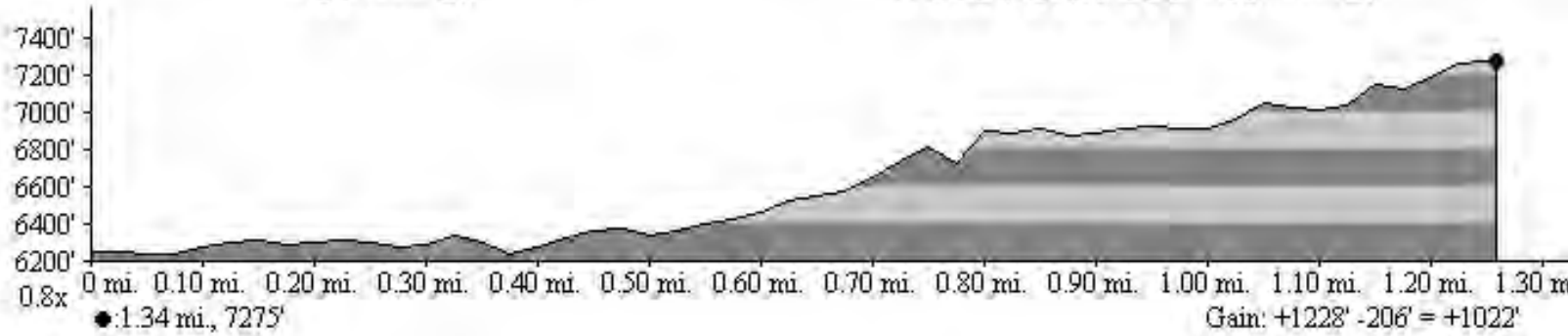
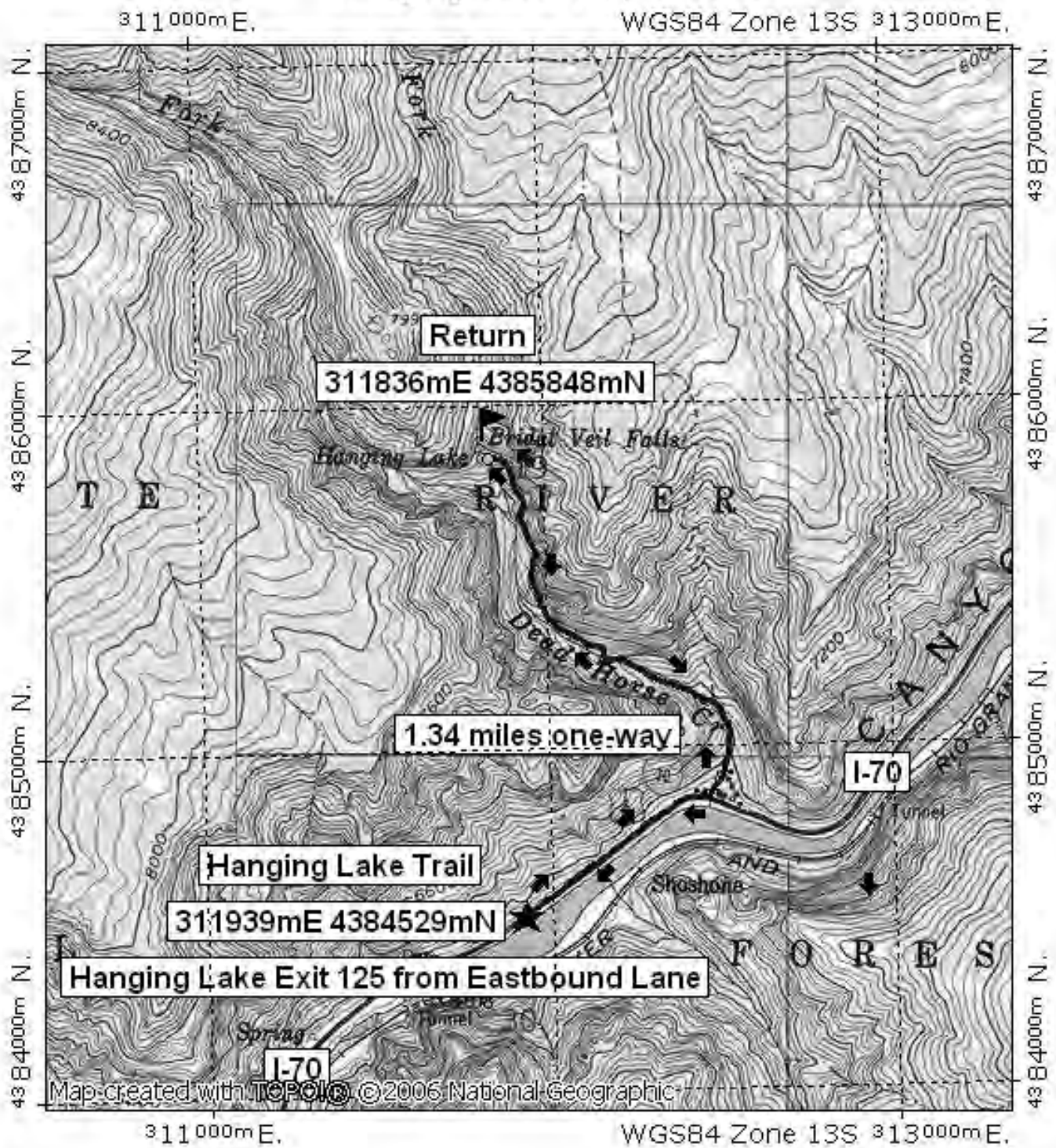
OUTDOOR RECREATION INFORMATION CENTER ■ 1416 Platte Street ■ Denver CO 80202

Ask us. We'll Tell You Where To Go ■ www.oriconline.org ■ Updated: 6-1-2013

Follow us on: ■ facebook.com/oriccolorado ■ Twitter: @oricbryan



Hanging Lake Day Hike



NATIONAL GEOGRAPHIC

0.0 0.5 1.0 miles
0.0 0.5 1.0 1.5 km

TN MN
10 1/2
04/30/08