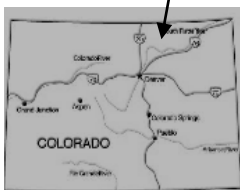


PAWNEE BUTTES



DAY HIKE

Early Season

Location: Pawnee National Grasslands
Apx 1 hour NE of Ft. Morgan

Contact Info: Pawnee Nat'l Grassland
970-353-5004
www.fs.fed.us/r2

Length: 1.68 miles one-way (estimate using the Nat'l Geo Mapping Software)

Time: The average person hikes apx. 2 miles an hour. Adjust your time +/- based on terrain, weather conditions and your skill and fitness level and whether you are hiking or trail running.

Season: Open year round (best enjoyed in the Spring and Fall)

Elevation Gain/Loss: +0' -260' -260'

Difficulty: Easy

Trail Users: Hikers and bird watchers

Dogs: On leash

Permits: None

Getting There From Denver: Take I-76 East (Exit 216) to Fort Morgan. Turn left (Exit 80) onto State Hwy 52. Follow State Hwy 52 North to the State Hwy 14 junction. Turn left at the junction and follow State Hwy 14 to the City of Raymer. Turn right at the City of Raymer onto Weld County Rd 129. Stay left at the Weld County Landfill to continue on County Road 127. Turn left onto County Road 110. Turn right on Forest Road 807 and follow it to the Pawnee Buttes trailhead.

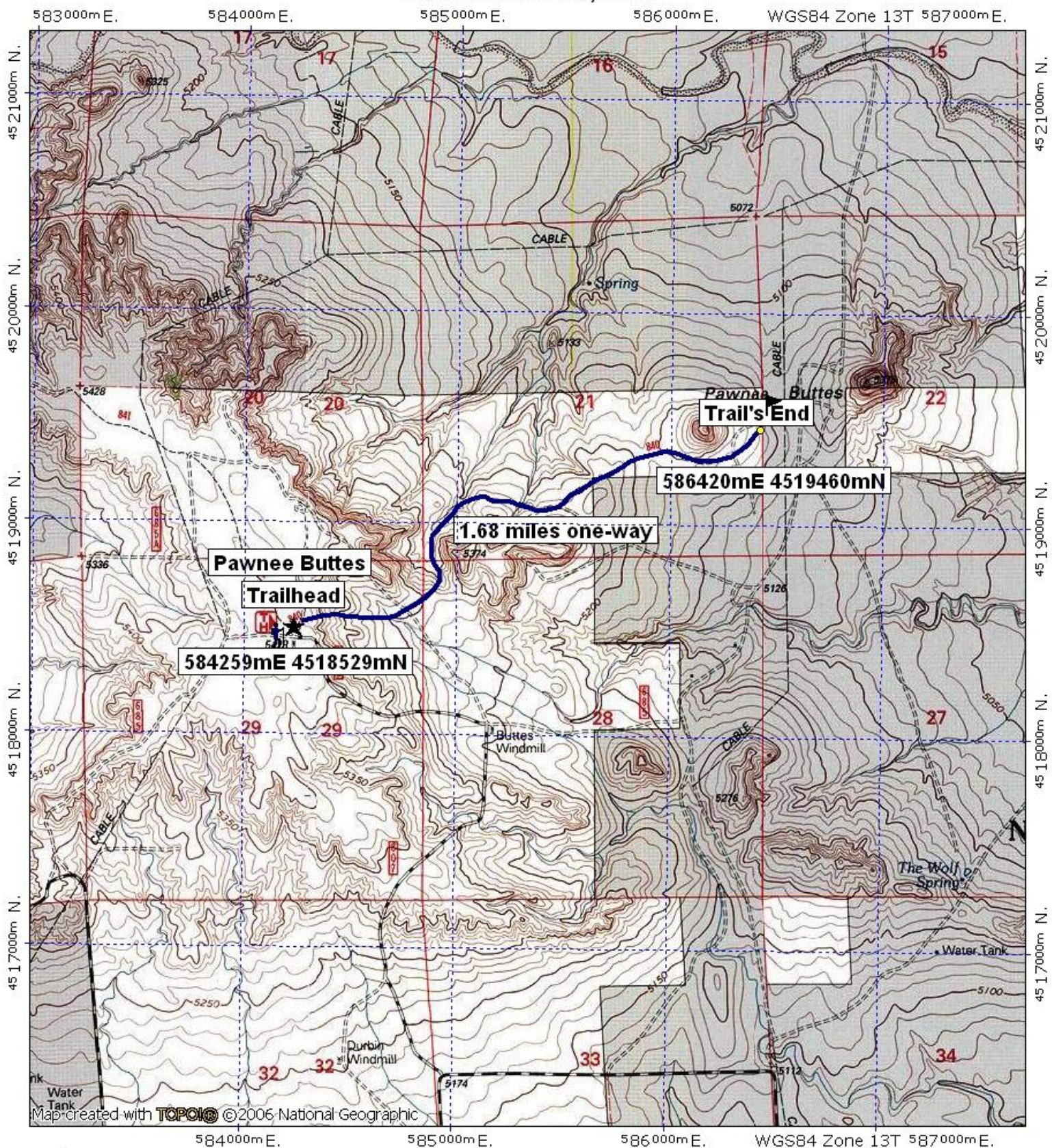
Maps: Pawnee Nat'l Grassland. **HINT:** Consider carrying a compass and a GPS receiver with your topographic map to aid you in staying found.

Safety Considerations and Supplemental Info: ■ Afternoon thunderstorms and lightning ■ The Overlook, the Lips Bluff trail and 200 yards from the bottom of Lips Bluff are closed March 1 – June 30 to protect nesting hawks, eagles and falcons. The Pawnee Buttes trail, however, is open. ■ Be prepared for mosquitoes from June through September

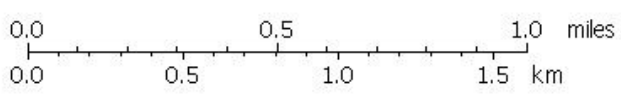
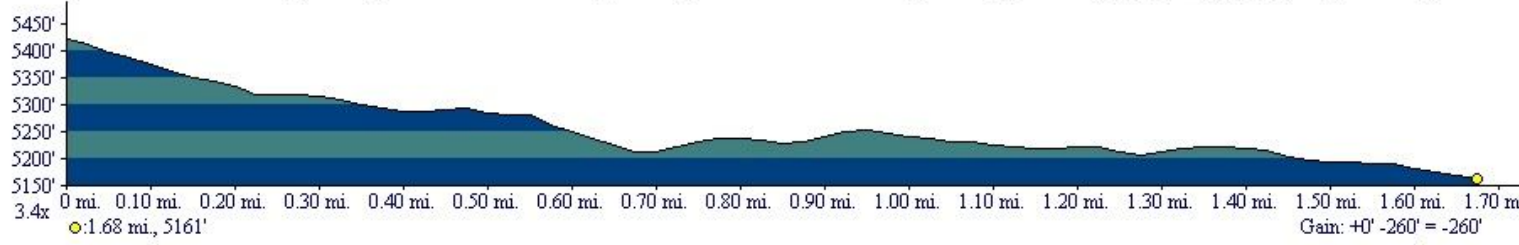
Trail Description: This is a plains hike known for its geologic formations and variety of bird species. The trail leads around the bottom of the buttes and gets light to moderate usage. The trail leads you past West Butte, traveling along an arroyo and between two bluffs for much of the way. The trail ends just beyond West Butte at private property and East Butte lies just a little further east. **TIP:** Contact the Pawnee National Grasslands for trail updates.

Highlights: ■ The sandstone buttes which stand approximately 300 feet above the surrounding landscape. They are composed of crumbling sandstone and house a number of raptors and hundreds of bird species ■ Wildflowers that peak in late May to early June ■ The town of Keota, a relic of the dust bowl years on the Colorado prairies

Pawnee Buttes Day Hike



Map created with **TOPOIC** ©2006 National Geographic



TN MN
9°
07/09/08