

SQUARE TOP LAKES



FYI: The map on the reverse side is not intended for navigation, but rather for general orientation.

P.S. More trail maps available at www.oriconline.org

DAY HIKE

Location: Arapaho Nat'l Forest
Near Guanella Pass
Off Guanella Pass Road

Contact Info: South Platte Ranger District
303-275-5610
www.fs.fed.us/r2

Length: 1.85 miles one-way (est. using the Nat'l Geo Mapping Software)

Time: The average person hikes apx. 2 miles an hour. Adjust your time +/- based on terrain and weather conditions and your skill and fitness level and whether you are hiking or trail running.

Season: June through mid October

Elevation Gain/Loss: +598' -190' = +408'

Difficulty: Moderate

Trail Users: Hikers, coyotes, pikas and marmots

Dogs: On leash

Permits: None Required

Getting There From Denver: Take US Highway 285 west to Grant. Turn right onto Park County Road 62 (a.k.a. the Guanella Pass Road, Forest Road 118 & 381) and take it to the summit of Guanella Pass. The parking area is at the end of a short drive on the westside of the road.

Maps: National Geographic Trails Illustrated Map #104E and or Mount Evans USGS 7.5 topographic map. **HINT:** Stay found with the aid of a topographic map, compass, GPS receiver and the skill to use them.

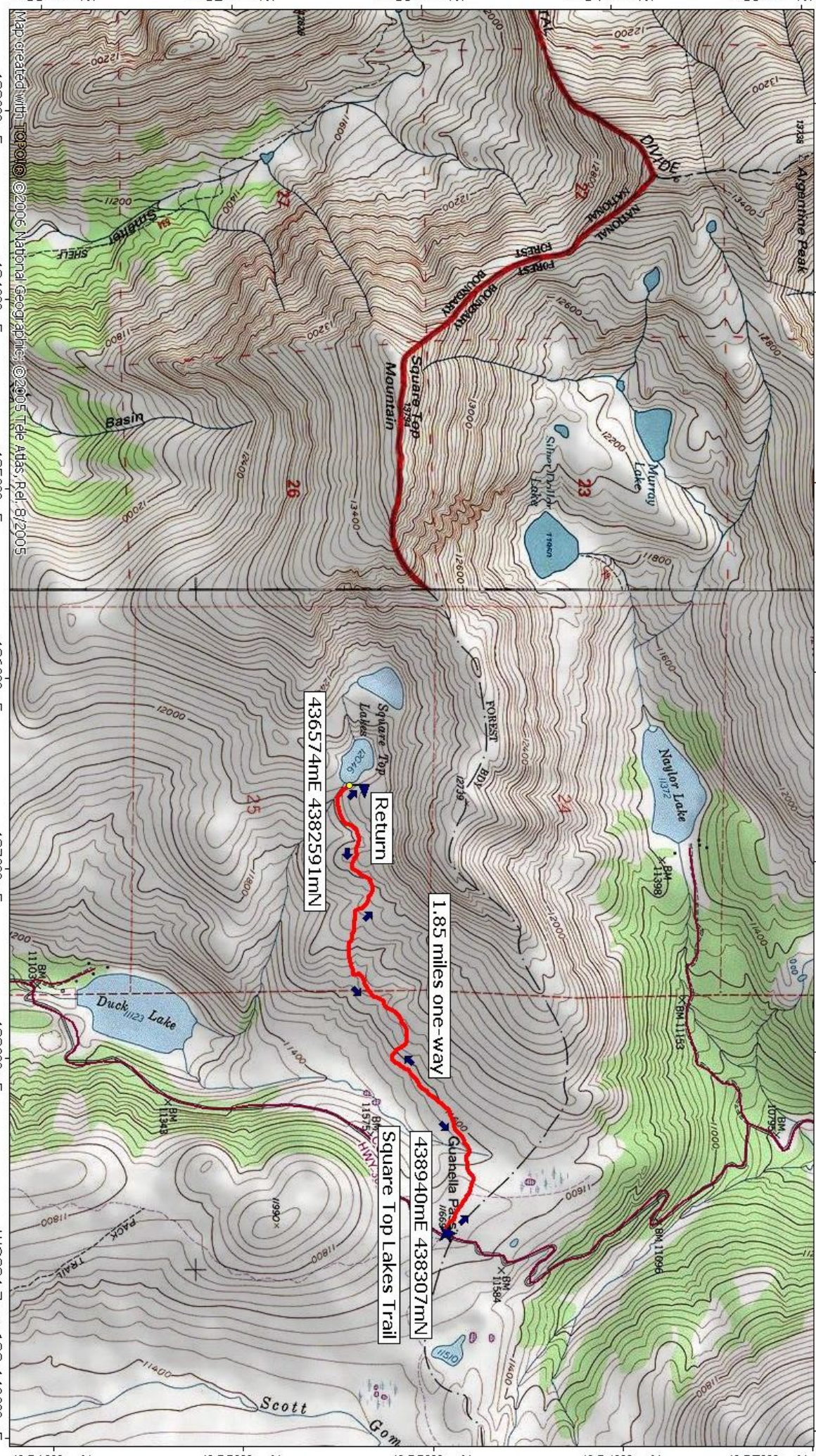
Safety Concerns and Supplemental Info: ■ The trail isn't technical, but there are few steep sections along the way—be prepared ■ Afternoon thunderstorms and lightning ■ Be prepared for mosquitoes from May through August ■ Parking is plentiful and there are pit toilets at the trailhead ■ The Guanella Pass Road was resurfaced in 2007 ■ Consider wearing bright colors during the hunting season

Trail Description: The South Park Trail #600 travels west from Guanella Pass to the lakes and beyond. The lower Square Top Lake rests at an altitude of 12,046 feet. **TIP:** Contact the South Platte Ranger District for trail updates.

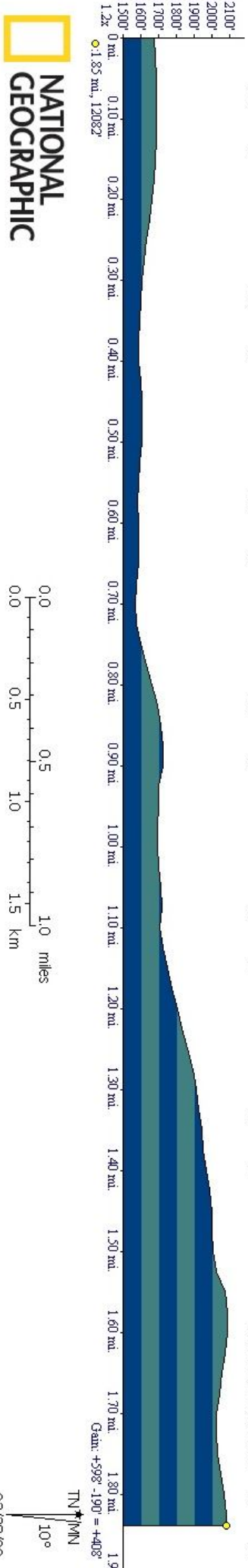
Highlights: ■ Beautiful tundra wildflowers in season ■ Fragrant willows ■ Proximity to a small waterfall ■ Two alpine, glacier fed lakes ■ Good views of Mt. Evans, Mt. Bierstadt and the Sawtooth ridge connecting them ■ You may see the pair of coyotes I saw when I last hiked the trail

433000m E. 434000m E. 435000m E. 436000m E. 437000m E. 438000m E. 439000m E. WGS84 Zone 13S 440000m E.

03/28/09 "Square Top Lakes Day Hike" topo 436276m E 4382916m N Zone 13S WGS84



433000m E. 434000m E. 435000m E. 436000m E. 437000m E. 438000m E. 439000m E. WGS84 Zone 13S 440000m E.



NATIONAL GEOGRAPHIC