

WHEELER LAKES & UNEVA PASS



DAY HIKE

FYI: The map on the reverse side is not intended for navigation, but rather for general orientation.

P.S. More trail maps available at www.oriconline.org

Location: Eagles Nest Wilderness
White River National Forest
Near Copper Mountain

Contact Info: Dillon District Ranger
970-468-5400
www.fs.fed.us/r2

Length: 5.39 miles one-way (estimate using the Nat'l Geo Mapping Software)

Time: The average person hikes apx. 2 miles an hour. Adjust your time +/- based on terrain and weather conditions and your skill and fitness level and whether you are hiking or trail running.

Elevation Gain/Loss: +2454' -230' = +2224'

Difficulty: Moderate

Trail Users: Hikers

Season: Mid June through the end of September

Dogs: Under owner's control

Permits: None required

Getting There From Denver: Take I-70 west from Denver towards Copper Mountain. Exit I-70 at the 195 exit ramp. Take Colorado Highway 91 over I-70 and turn left at the first stoplight. This frontage road goes past a Conoco Station, a Starbucks Coffee Shop and then past a large TV Receiving Dish before you see the trailhead parking lot on the right. Park here and then double back along the frontage road and then over the same bridge you crossed to reach the trailhead.

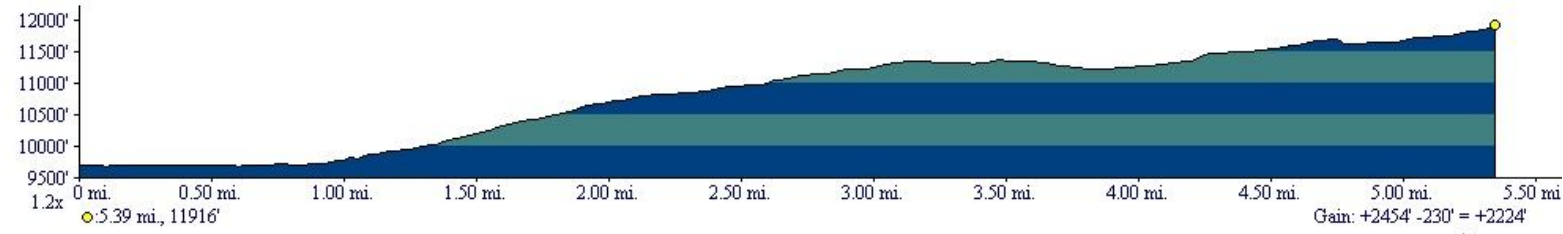
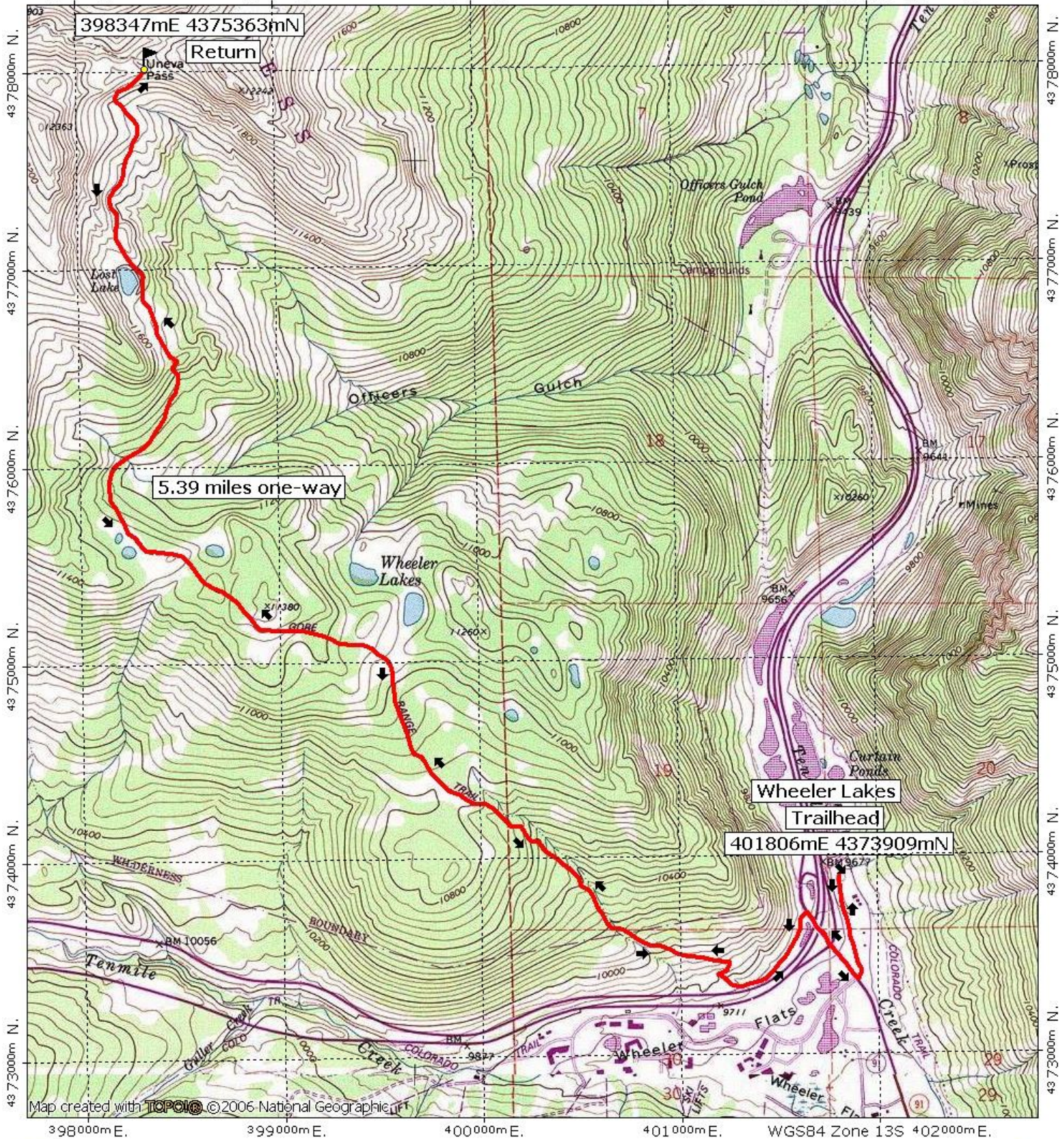
Maps: National Geographic Trails Illustrated # 108E. **IMPORTANT:** Stay found with the aid of a topographic map, a compass, a GPS receiver and the skill to use them.

Safety Considerations and Supplemental Info: Afternoon thunderstorms and lightning.

Trail Description: The Gore Range Trail (FDT #60) parallels I-70 for a while and does not gain much elevation. It soon leaves I-70 and begins to climb to the north. The trail passes a short spur trail to Wheeler lakes and eventually tops out on Uneva Pass at 11,750 ft. The trail continues down the north side of Uneva Pass, but the top of the pass is the end of this day hike. Return the way you came. **TIP:** Contact the Dillon Ranger District for trail updates.

Highlights: ■ Views from the top of the pass ■ Views of a beautiful high valley on the north side of the pass ■ Trail passes through an Aspen and lodgepole pine forest

398000m E, 399000m E, 400000m E, 401000m E, WGS84 Zone 13S 402000m E.



0.0 0.5 1.0 miles
0.0 0.5 1.0 km

TN MN
10°
05/28/09