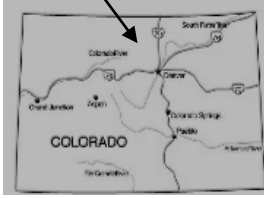


GREEN MOUNTAIN TO BIG MEADOWS



WINTER TRAIL

FYI: The map on the reverse side is for general orientation, not for navigation.
P.S. Give and get snow and trail updates at www.facebook.com/oriccolorado

Location: Rocky Mountain Nat'l Park
Westside of Park
Grand Lake Entrance

Contact Info: Kawuneeche Visitor Ctr
970-627-3471
www.nps.gov

Length: 1.78 miles one-way (est. mileage rounded to the nearest ¼ mile)

Time: The average person snowshoes apx.1 mile an hour. Adjust your time +/- based on terrain, snow conditions, wind speed, your skill and fitness levels and whether you are snowshoeing, skiing or hiking.

Elevation Gain/Loss: See trail profile on reverse side

Difficulty: Moderate

Activities: Snowshoeing, skiing and hiking (when there's not enough snow)

Season: December through March (Check www.oriconline.org for snow depths and avalanche conditions)

Dogs permitted: Not allowed

Permits: National Parks Pass or Individual & Family Entrance Fees

From Denver: Take I-70 west to Exit 232 near Empire. Get off on exit 232 and take US Highway 40 to Granby. Continue past Granby and turn right on US Highway 34. Continue North on US Highway 34 to the Grand Lake Entrance to Rocky Mountain National Park. From the entrance fee station continue 2.6 miles to the Green Mountain trailhead and parking area on your right.

Maps: National Geographic Trails Illustrated # 200S Rocky Mountain National Park.

■ **IMPORTANT:** Stay found with the aid of a topographic map, a compass, a GPS receiver and the skill to use them.

Safety Concerns and Supplemental Info: ■ Dress appropriately for winter conditions ■ Plan for shorter days in this season

The Trail: Head east into the woods toward Big Meadows from the kiosk at the trailhead. The trail is well identified with orange markers. Climb steadily through the trees and cross several small bridges. Continue to the Tonahutu Creek trail crossing. Head left to a hitch rack. Return the way you came. **TIP:** Contact the Kawuneeche Visitor Center for trail updates and snow conditions.

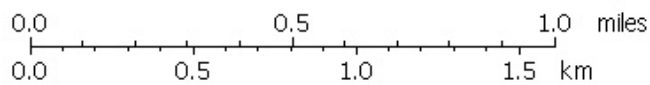
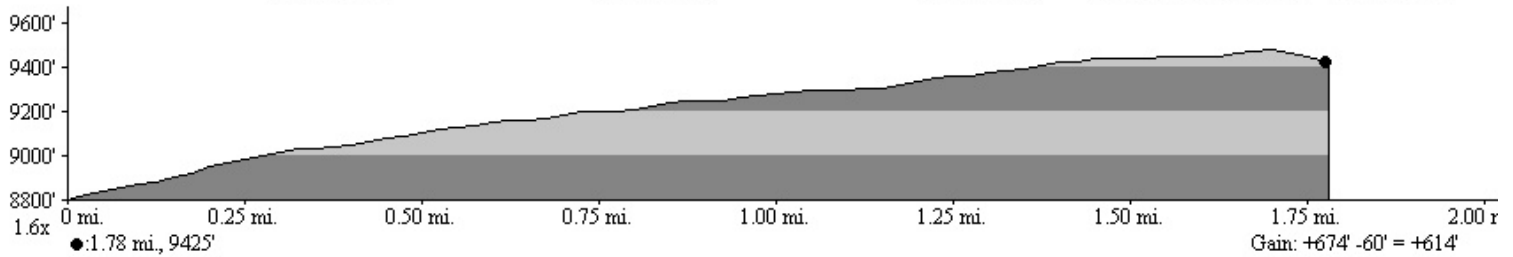
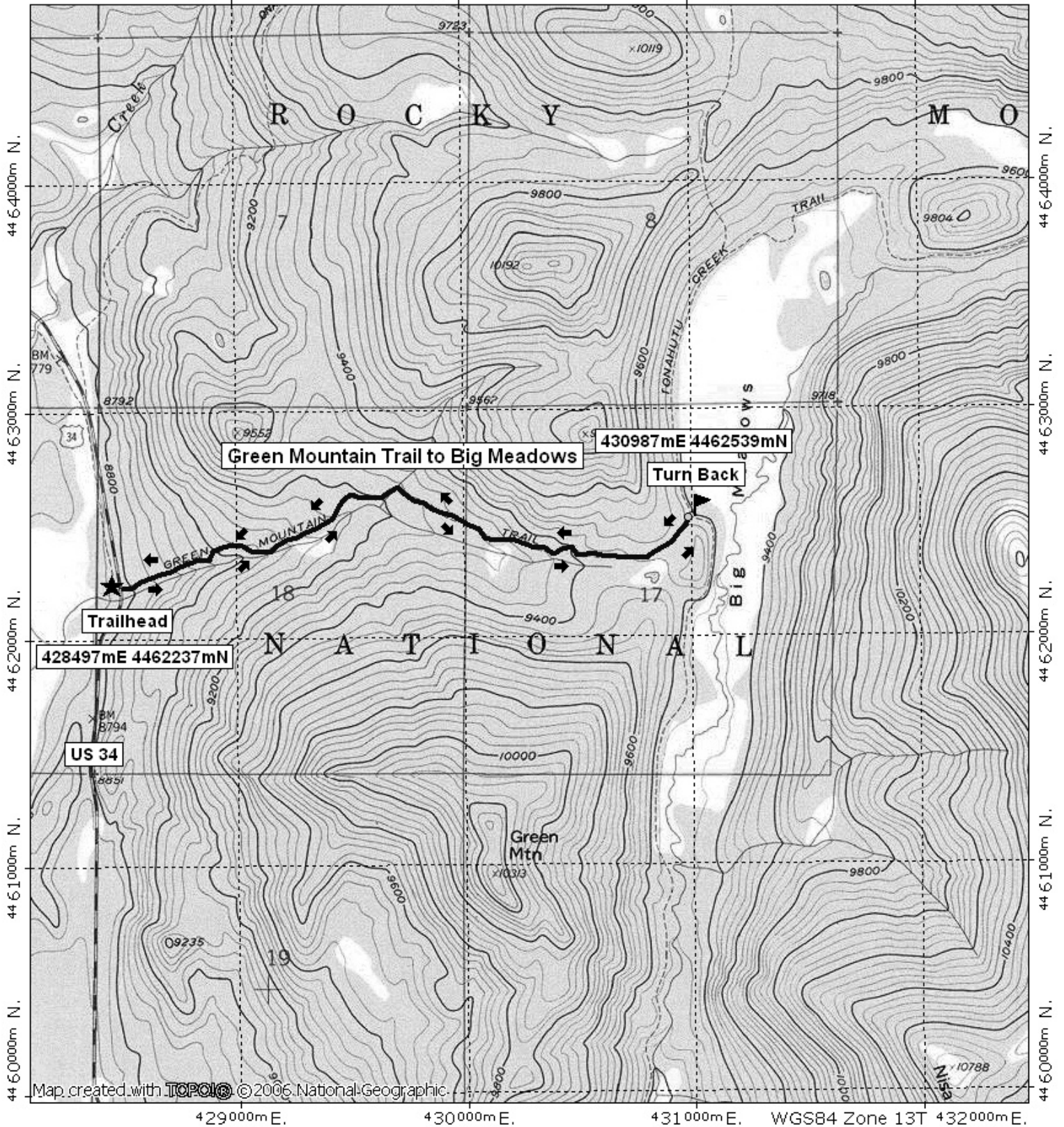
Highlights: ■ The view across Big Meadows is beautiful from the hitch rack
■ Wildlife viewing opportunities ■ Meadow surrounded by forest ■ Views of Green Mountain and an assortment of snow capped peaks

Visit us in the REI DENVER FLAGSHIP STORE
OUTDOOR RECREATION INFORMATION CENTER ■ 1416 Platte Street ■ Denver CO 80202
Ask us. We'll Tell You Where To Go ■ www.oriconline.org ■ Updated: 2-3-2018
Follow us on: ■ facebook.com/oriccolorado ■ Twitter: @oricbryan



Green Mountain to Big Meadows Winter Trail Final

429000m E. 430000m E. 431000m E. WGS84 Zone 13T 432000m E.



TN ↑ MN
10°
11/02/07