



WHEELER LAKES

WINTER TRAIL

FYI: The map on the reverse side is not intended for navigation, but rather for general orientation.

P.S. More trail maps available at www.oriconline.org

Location: Eagles Nest Wilderness
White River National Forest
Near Copper Mountain

Contact Info: Dillon District Ranger
970-468-5400
www.fs.fed.us/r2

Length: 2.92 miles one-way (est. mileage rounded to the nearest ¼ mile)

Time: The average person snowshoes apx. 1 mile an hour, not including breaks. Adjust your time +/- based on terrain, snow conditions, wind speed, your skill and fitness level and whether you are snowshoeing, skiing or hiking.

Elevation Gain/Loss: +1423' -12' = +1411'

Difficulty: Moderate to Strenuous (depending upon how far you go)

Activities: Snowshoeing, skiing and hiking (when there's not enough snow)

Season: December through March (Check www.oriconline.org for snow depths and avalanche conditions)

Pets: Dogs must be on a leash not longer than six (6) feet in length

Permits: None required

Getting There from Denver: Take I-70 west from Denver towards Copper Mountain. Exit I-70 at the 195 exit ramp. Take Colorado Highway 91 over I-70 and turn left at the first stoplight. This frontage road goes past a Conoco Station, a Starbucks Coffee Shop and then past and a large TV Receiving Dish before you see the trailhead parking lot on the right. Park here and then double back along the frontage road and then over the same bridge you crossed to reach the trailhead.

Maps: National Geographic Trails Illustrated # 108E **IMPORTANT:** Stay found with the aid of a topographic map, a compass, a GPS receiver and the skill to use them.

Safety and Supplemental Info: ■ This is not a good trip for snowshoeing because of the lengthy, flat traverse along I-70 before you begin to climb to the north and get into the good stuff ■ Plan for shorter days in the Winter months

Trail Description: Forest Development Trail # 60 (Gore Range Trail). The trail parallels I-70 for a while and does not gain much elevation. It soon leaves I-70 and begins to climb to the north. A spur trail leads you to Wheeler Lakes.

TIP: Contact the Dillon Ranger District for trail updates and snow conditions.

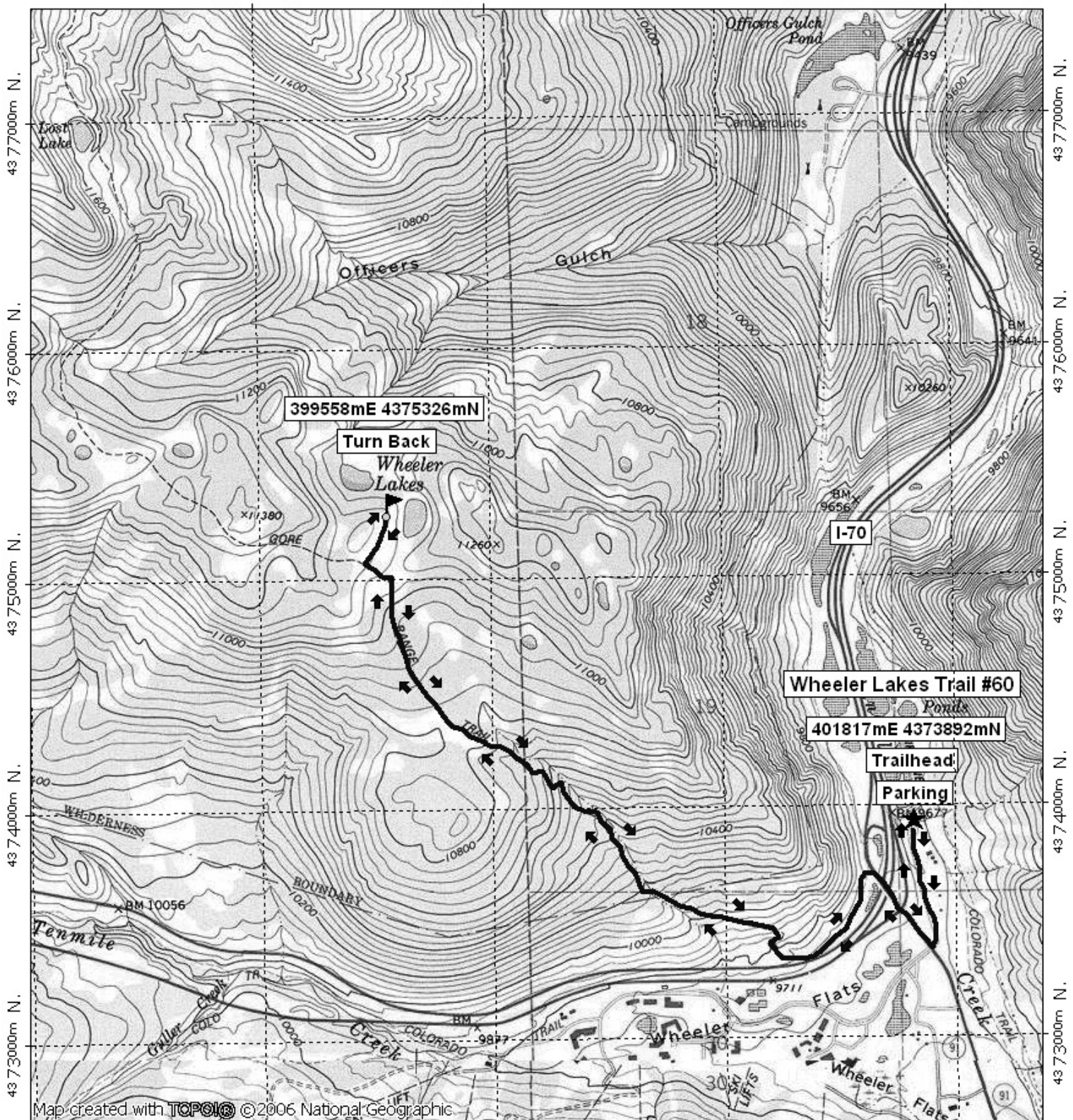
Highlights: ■ Views to the South are spectacular (they aren't too bad to the North, East and West either) ■ Trail passes through an Aspen and lodgepole pine forest

Wheeler Lakes Winter Trail Final

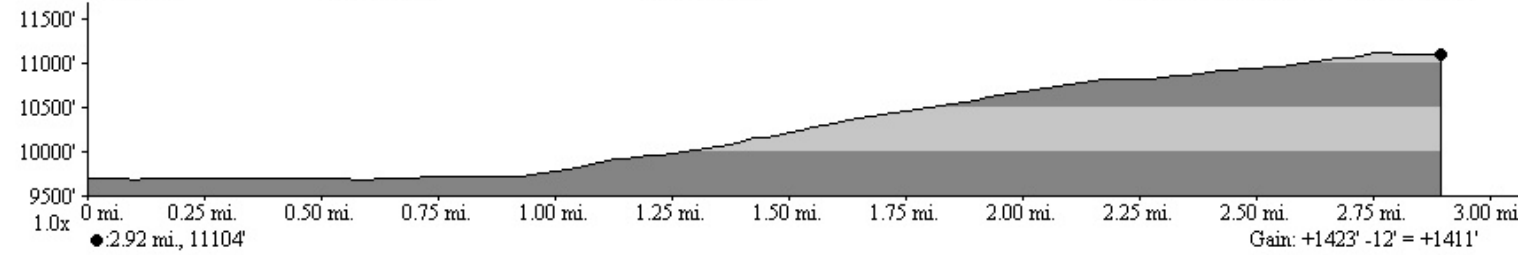
399000m E.

400000m E.

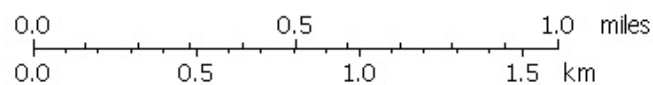
WGS84 Zone 13S 402000m E.



398000m E. 399000m E. 400000m E. WGS84 Zone 13S 402000m E.



Map created with **TOPOLIC** ©2006 National Geographic



TN MN
10°
10/26/07