

## BOULDER LAKE

## WINTER TRAIL

**FYI:** The map on the reverse side is not intended for navigation, but rather for general orientation.

**P.S.** More trail maps available at [www.oriconline.org](http://www.oriconline.org)

**Location:** Eagles Nest Wilderness  
White River National Forest  
Off CO 9 N. of Silverthorne

**Contact Info:** Dillon Ranger District  
970-468-5400  
[www.fs.fed.us/r2](http://www.fs.fed.us/r2)

**Length:** 4.03 miles one-way (est. mileage rounded to the nearest ¼ mile)

**Time:** The average person snowshoes apx. 1 mile an hour, not including breaks. Adjust your time +/- based on terrain, snow conditions, wind speed, your skill and fitness level and whether you are snowshoeing, skiing or hiking.

**Elevation Gain/Loss:** +1372' -1' = +1371'

**Difficulty:** Easy to Moderate

**Activities:** Snowshoeing, skiing and hiking (when there's not enough snow)

**Season:** December to March (Check [www.oriconline.org](http://www.oriconline.org) for snow depths and avalanche conditions)

**Dogs permitted:** On a leash not longer than six feet in length

**Permits:** None required

**Getting There from Denver:** Take I-70 west to Silverthorne. Go north on CO Highway 9 to the Boulder Creek Trail (about 9 miles on west side of road). The trailhead is at the beginning of Forest Road 1376.

**Maps:** National Geographic Trails Illustrated #108E (eastside, top center), Latitude 40° Summit County and or the Willow Lakes USGS 7.5 topographic map. **IMPORTANT:** Stay found with the aid of a topographic map, a compass, a GPS receiver and the skill to use them.

**Safety Concerns and Supplemental Info:** ■ Dress appropriately for winter conditions ■ Plan for shorter days in the Winter months

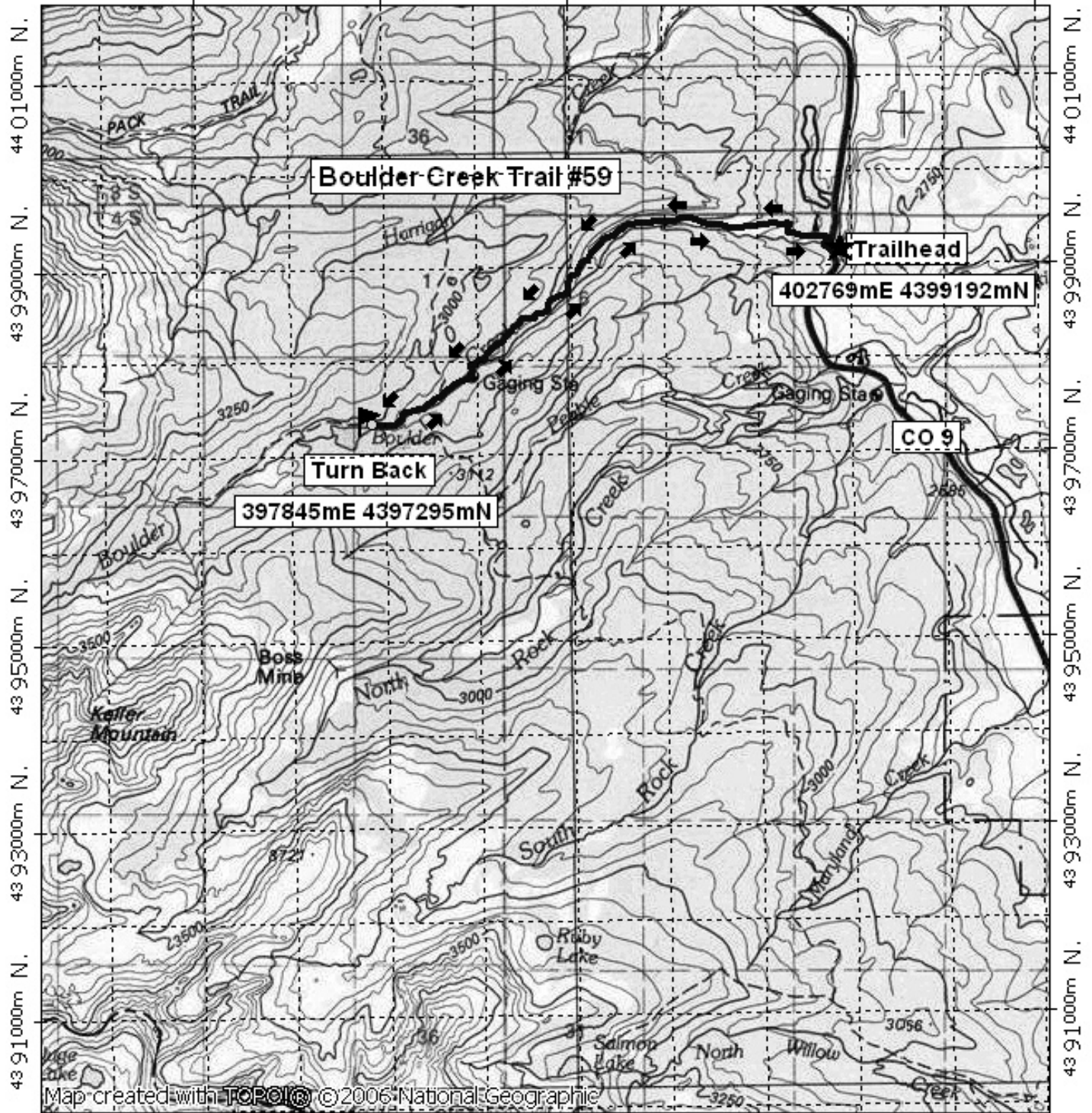
**The Trail:** The Boulder Creek Trail #59 follows Boulder Creek through the trees to the lake. It is steep at the beginning.

**TIP:** Contact the Dillon Ranger District for trail updates and snow conditions.

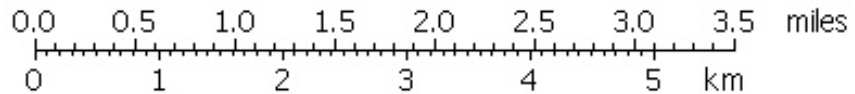
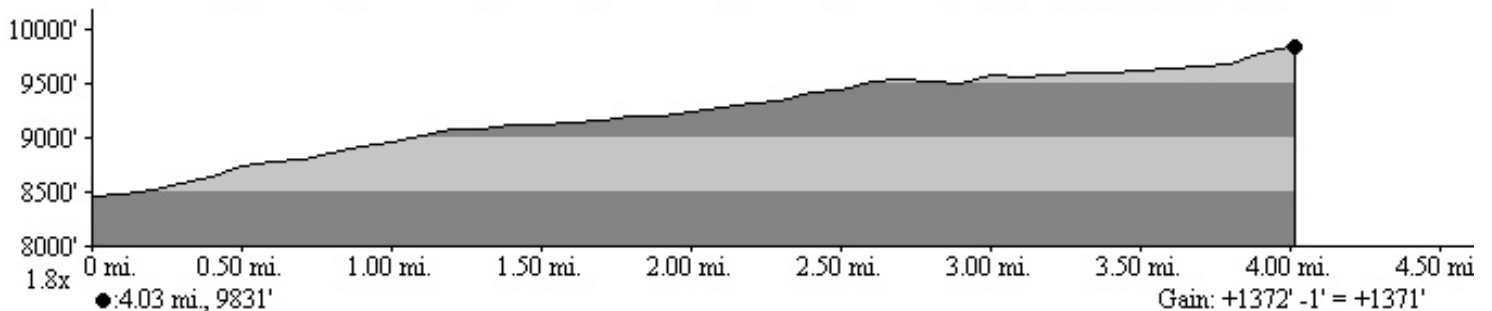
**Highlights:** ■ Views of Gore Range are spectacular ■ Beautiful lake ■ Groves of Aspen ■ Several small, frozen ponds along the way ■ Several meadows

# Boulder Creek Winter Trail

396000m E, 398000m E, 400000m E, WGS84 Zone 13S 405000m E.



396000m E, 398000m E, 400000m E, WGS84 Zone 13S 405000m E.



TN MN  
10°